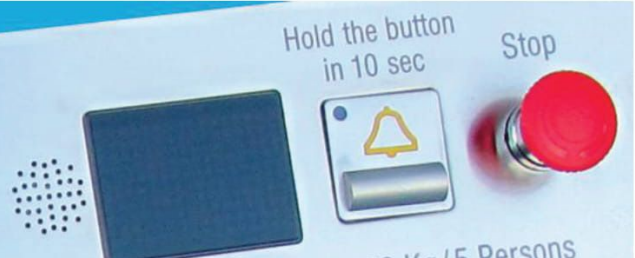


Motala 2000

Design Options



Motala 2000 design can be adapted in many different ways to blend in with modern architecture and environments. The design options are presented in this folder to facilitate planning and decision making. (O) Option. (*) Vinyl flooring.

Platform



Standard



Exclusive Oak (O)

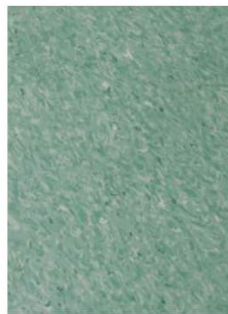


Exclusive Steel (O)

Floors



Grey 3040383*



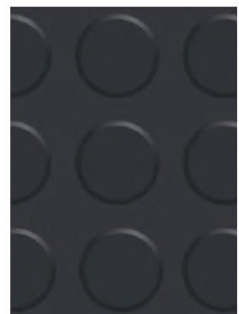
Green 3040780*



Yellow 3040772*



Grey rubberfloor SC009 (O)



Black rubberfloor SC001(O)



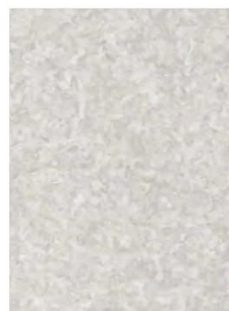
Dark oak 11522* (O)



Classic oak 11542* (O)



Cherry 11492* (O)

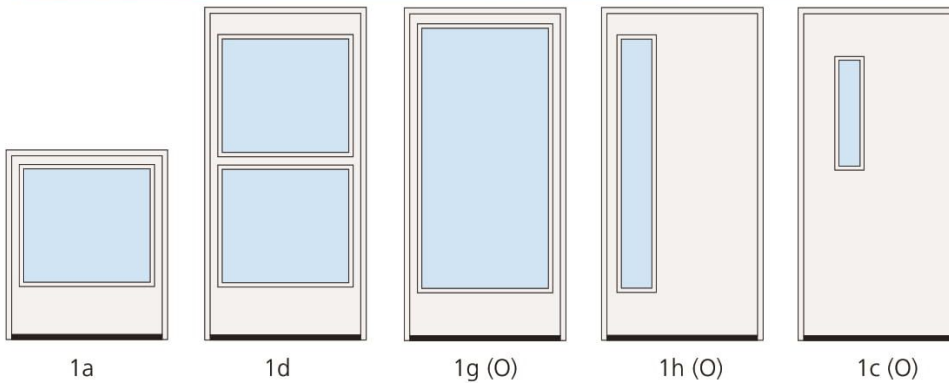


Light granit 3116561* (O)



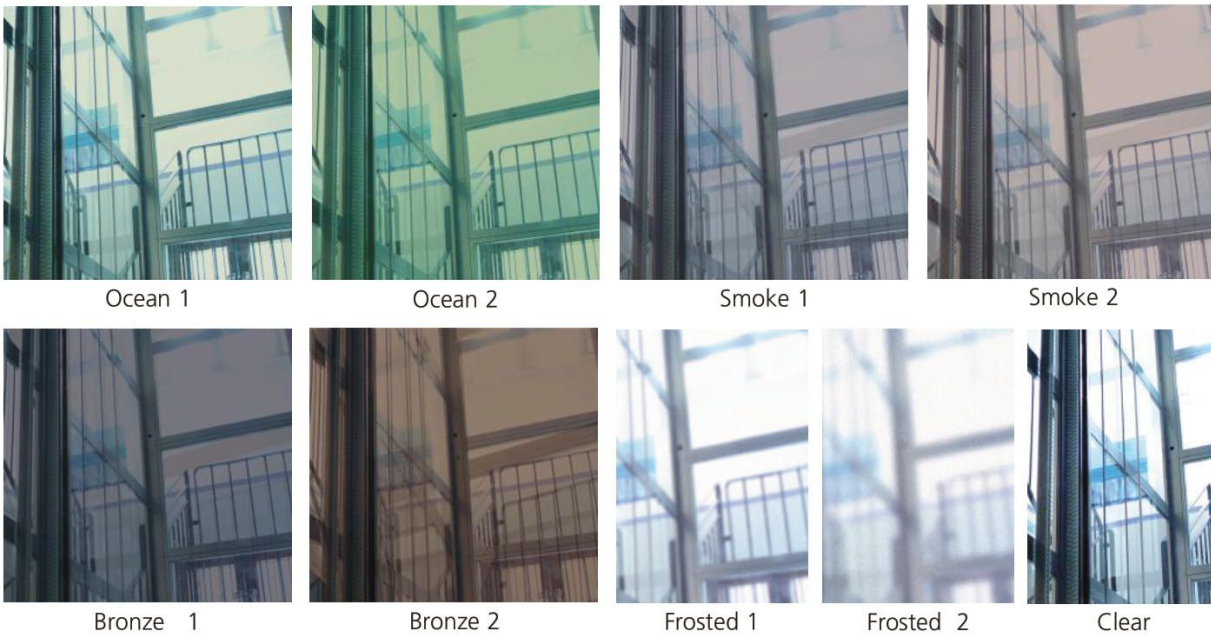
Dark granit 3116568* (O)

Doors



- 1h is available as certified fire door EI30/EW60.
- 1d is available as certified fire door EI30.
- 1c is available as fire door EI60.

Shaft Glazing



Additional options



- Factory paintwork, RAL colours.
- Automatic swing doors.
- Emergency telephone.
- Key operation.
- Automatic locking.
- Folding chair.
- Braille signalization.
- Audible announcements (voice synthesizer).
- Extra wide doors (1000 mm).



- Landing floor buttons away from the platform lift for easier use by people in wheelchairs.
- Stainless steel or wooden door handle.
- Remote control.
- Floor indicator.
- Hidden door closer.
- Elbow push.
- Electrical emergency lowering.
- Ramp.



Installation examples of shaft size 1250x1560 mm

Lift for indoor installation only

Motala 2000 has its own self-supporting shaft. It does not require a supporting wall as all the forces are directed down to the pit.

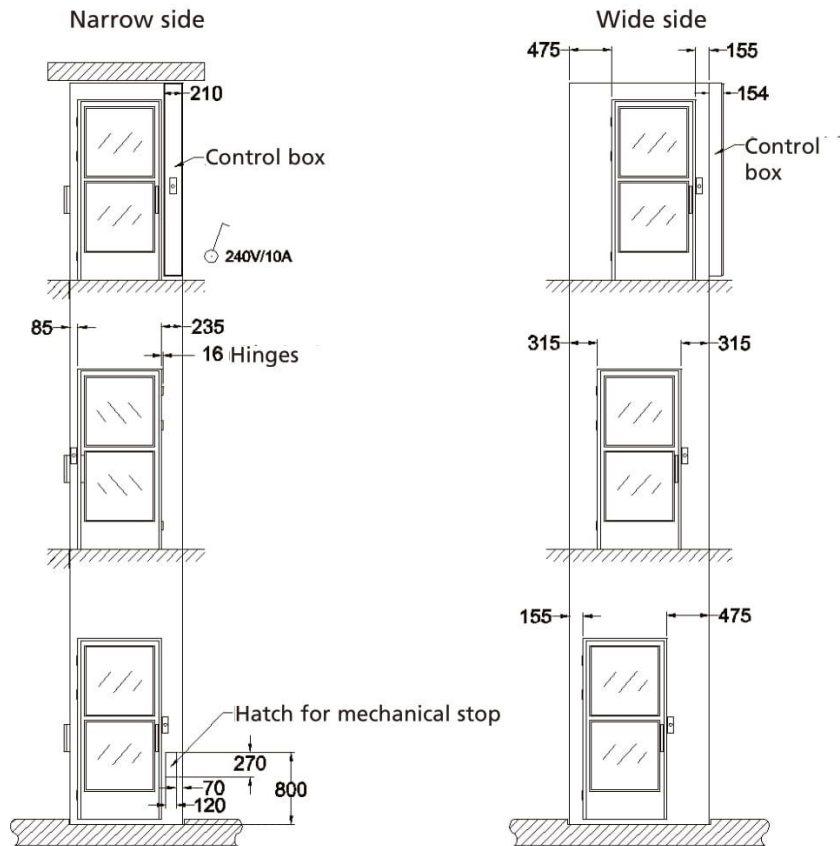
The control box is integrated into the highest floor door frame.

At the lowest floor door frame there is a hatch to house a mechanical stop (pit prop).

Doors fitted in the wider sides can be supplied in 900 or 1000mm widths. They can be positioned centrally or offset. The doors illustrated are 900mm wide.

Ceiling height at front door when an automatic opener is used should be minimum 2200mm. For manual door closers 2150mm height is needed.

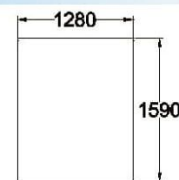
If the door height 1900mm is used, the above dimensions are reduced by 100mm.



Shaft installation space

Shaft installation space refers to the floor opening and free vertical space on each level needed for installation of the lift.

This is 30mm larger than the finished elevator shaft dimensions. (The example illustrated is for the platform size 1120x1480mm, shaft size 1250x1560mm).

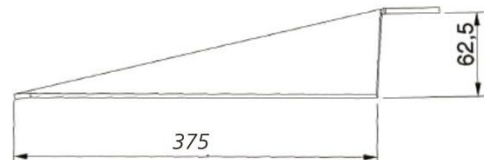


Pit/Aluminium ramp

The pit should be 60mm deep, for the lift floor to be level with the bottom floor.

The elevator can also be installed without a pit, when an aluminum ramp option is ordered.

(The pit floor should be smooth, level and dust-free).



Fire protection

The shaft is made of aluminium profiles and sheet metal sandwich panels with mineral wool insulation. The shaft is not fire rated. Doors and door frames can be ordered in classes EI30/EW60, whereas the rest of the shaft needs to be fire protected locally. Plasterboard can be screwed directly to the shaft,

(no closer than 10cm from the edges of the shaft which may contain cables).

Please note the shaft wall is 35mm thick while the wall on the lift drive side is only 25mm.

Design guide

This brochure is intended to provide an overview and we reserve the right to change designs or specifications at any time. No claims shall be interpreted as warranties or commitments, express or implicit, for any product, its suitability for different applications or quality, or as an addendum to a purchase contract. There may be small differences between colours printed and actual colours. Motala, Motala 2000 and MC 2000 are trademarks owned by Motala Hissar AB.



Product specification

- Travel:** Max 13 m.
- Speed:** 0.15 m/s.
- Stops:** 2-6 (Motala 2000 Home max 4).
- Doors:** Swing door 900 x 2000 mm.
- Rated load:** 500 kg (400 kg for Motala 2000 Home).
- Headroom:** 2230 mm above top finished floor (1300mm half-door option available).
- Supply voltage:** Single phase 230-240 V / 10 A.
- Drive system:** Drive system: guided chain system with lifecycle greased gear and 0.55 kW asynchronous motor. Safety gear and overspeed governor.
- Shaft:** Self-supporting enclosure. No need for conventional shaft. Shaft height on top floor is 2200 mm or 1300 mm with half-door: Lift shaft can be glazed on all sides. 60 mm depth, alternatively a ramp.
- Pit:** L-shaped platform with safety edge.
- Control system:** PLC-system.
- Emergency lowering:** Manual or electric emergency lowering to lowest level.
- Alarm:** Alarm: Battery-powered, automatically recharging alarm system. Emergency buzzer. Optionally, two-way voice connection to 24-hour manned service centre.
- Certification** fulfills European Union Machinery Directive 2006/42/EC and European Harmonized Standard EN81-41.

Dimensions

Motala 2000 is available in three different versions:

- Motala 2000** for public buildings
- Motala 2000 Home** for private villas
- Motala 2000 XL** with extra large platform

	Motala 2000 Home	Motala 2000	Motala 2000 XL
Shaft size	1150 x 950	1150 x 1560	1150 x 1760
Platform size	1020 x 870	1020 x 1480	1020 x 1680
Shaft size	1250 x 950	1250 x 1560	1250 x 1760
Platform size	1120 x 870	1120 x 1480	1120 x 1680
Shaft size	1350 x 950	1350 x 1560	1350 x 1760
Platform size	1220 x 870	1220 x 1480	1220 x 1680

Well size is shaft size + 30mm

Globale Lift International
 Centrum-Zuid 3023 / 2
 3530 Houthalen-Helchteren
 Contacteer ons info@globalelift.be
 Tel: +32(0)12/26.14.37 • Fax: +32(0)12/23.87.28

