

BENOIT SYSTEMES



LIGHT DRIVE 2.1

WWW.BENOITSYSTEMES.COM

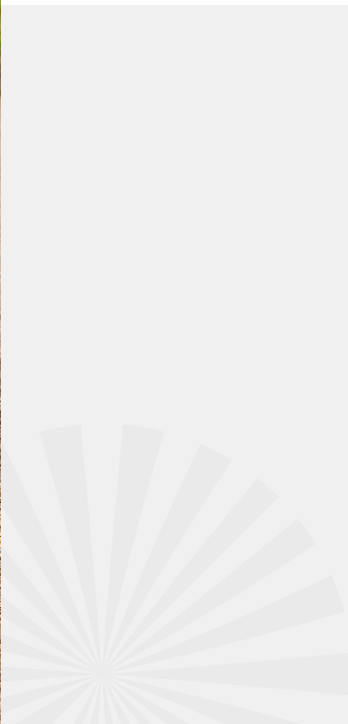




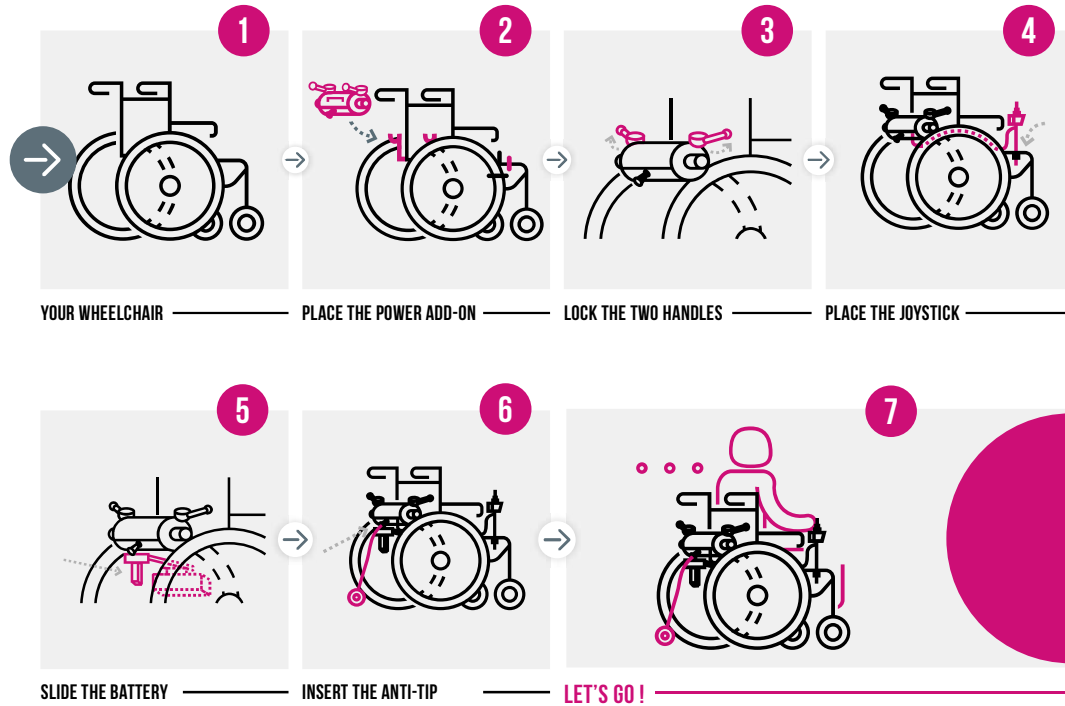
LIGHT DRIVE 2.1

Designed for all manual wheelchair users, whether occasional, temporary or permanent, LIGHT DRIVE 2.1 turns manual wheelchair into ultralight and high performance powerchair in seconds.

Benoit Systemes has been fitting power add-ons on manual wheelchairs in France since 1994. LIGHT DRIVE 2.1 offers you the possibility to effortlessly add power to your manual wheelchair.



HOW DOES IT WORK ?




Disengage the power add-on in one movement and feel free to self-propel.

Jean-Claude
User since 2016 - diagnosed with multiple sclerosis in 2013.

“ My Light Drive helps me all year around to go shopping with my wife, to stroll through shopping centres and, on fine days, to wander around car boot sales and markets. Since I've had my Light Drive, I've become independent. I no longer need somebody with me all the time.





LIGHT DRIVE 2.1
Ready for new
adventures ?

ADVANTAGES OF LIGHT DRIVE 2.1



LIGHTWEIGHT
AND EASILY
TRANSPORTABLE



ADAPTS TO ALL
WHEELCHAIRS*

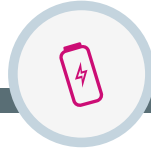
**see the compatibility guide*



INSTANT
INSTALLATION



INDOORS/
OUTDOORS



RANGE UP
TO 15 KM



CAN BE
TRANSPORTED
BY PLANE*



MADE
IN FRANCE



REMOVABLE



COLOUR OF
YOUR CHOICE

**11.4 Ah battery complies with IATA regulation.*

Light Drive 2.1

is lightweight, removable and easily transportable.



KEY FEATURES



Ergonomic
clutch system



Retractable
joystick



Anti-tip
for safety



Extended colour
range



NEW IN 2022

Battery with
charge indicator

WIDE RANGE OF COLOUR



CLASSICS

- BLACK
- WHITE
- BLUE
- RED
- KHAKI

METALLICS

- MIDNIGHT BLUE
- GREY
- SILVER
- COPPER
- CHAMPAGNE GOLD

TRENDY

- SKY BLUE
- PINK
- GREEN
- YELLOW
- ORANGE

LIGHT DRIVE MINI 2.1



A smaller version for children

Light Drive Mini 2.1 can be refitted as the child grows allowing to change wheelchair without changing the power add-on.

Wheelchair equipped with a Light Drive maintains its original manoeuvrability and foldability, it is also easy to transport in any vehicle.

Thanks to Light Drive Mini 2.1, your child will be able to ride easily on all kinds of terrain (steep slopes, grass, gravel).

Reverse gear makes the pedestrian pavement and small step more accessible.



TECHNICAL DETAILS

Our power add-ons can be fitted on most of wheelchairs starting from **32cm seat width and 40 cm between the wheels**.

	Maximum user weight	Power add-on weight
Light Drive 2.1	120 kg	8,8 kg
Light Drive Mini 2.1	120 kg	8,8 kg
Light Drive Plus 2.1	240 kg	16 kg

Max speed	10 km/h programmable
Motor	2 x 130W motors with brakes
Motor Light Drive Plus 2.1	4 x 130W motors with brakes
Climbing ability	6° (11%)
Manufacturer's warranty	24 months for the power add-on and the battery

LIGHT DRIVE PLUS 2.1



Light Drive Plus 2.1 has been designed for users of wheelchairs with a weight above 120 kg.

Equipped with four 130 W motors, it will allow you to enjoy the advantages of lightweight power add-ons.

Light Drive 2.1 Plus can be fitted on all foldable wheelchairs. It is provided with a battery of 18Ah and offers a range up to 20 km.



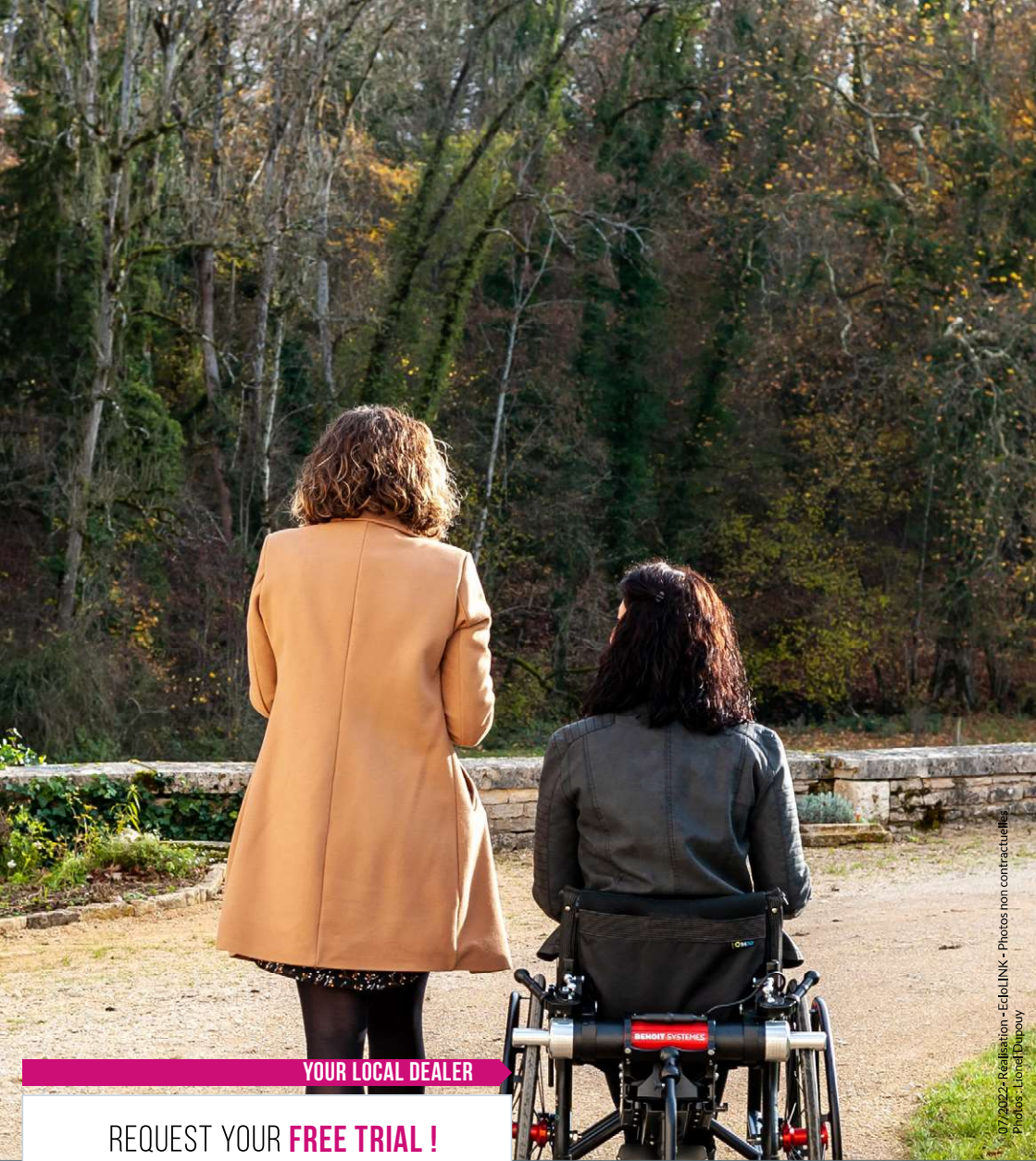
Compatible wheelchairs: a compatibility guide is available to know the models of wheelchairs on which Light Drive 2.1 can be installed, in compliance with general requirement for safety and performance stated in the European Regulation related to medical devices. [Find out more](#)



11.4 AH LITHIUM-ION BATTERY COMPLIES WITH APPLICABLE IATA REGULATIONS FOR AIR TRAVEL.

Model	Weight	Range
— Lithium-ion battery	— 3,85 kg	— up to 15 km





YOUR LOCAL DEALER

REQUEST YOUR **FREE TRIAL !**

📍 7 Rue du Pont,
21450 Billy-Lès-Chanceaux, FRANCE
☎️ (+33) 3 80 96 54 65
@ export@benoitsystemes.com

CE This medical device is a regulated health product and bears the CE marking. As manufacturer, BENOIT SYSTEMES declares that this products is Class I medical devices and complies with EU Regulation 2017/745/CEE on medical devices.