

INGLESE - cod.22428/A - 27/07/2021



ORMESA®
• MADE IN ITALY SINCE 1980 •

CLIP



CLIP

Life made easier.

CLIP by Ormesa is a **practical and fast seating system, for people with disabilities, children and adults.** It is **easy to handle, fold and push.**

Its wheels are suitable for all terrain and **folding operations have never been so user-friendly:** CLIP is ideal for families always on the move.

Thanks to a **wide range of available components** it adapts to any needs.

Clip has a **durable structure** thanks to the **double cruise frame** positioned on the backrest and under the seat which gives more stiffness without sacrificing comfort.



Clip 1-2-3 passed the **CRASH TEST** according to the **ISO 7176/19**

PRODUCT
MARKED **CE**

CLIP is a **MEDICAL DEVICE** that **COMPLIES WITH THE SAFETY REQUIREMENTS** defined with the **REGULATION (EU) 2017/745**



Easy to handle

A versatile urban stroller

CLIP is available in **four sizes**: Clip 1-2-3 for children and Clip 4 for kids.

Its **low weight** and **easy folding**, make it the ideal solution for those families who are often traveling or living in the city, with obligatory and often inaccessible passages on sidewalks and crowded areas.

Padded and breathable upholstery, reinforced with internal bars, easily removable for washing.



Clip 1-2-3 passed the **CRASH TEST** according to the **ISO 7176/19**

CLIP 1-2-3



CLIP 4



Technical features and adjustments



Folding frame

umbrella-like closing system. It is painted with non-toxic epoxy paint.



Backrest

semirigid with inner aluminium supports: they are shapeable according to postural needs, removable to wash the upholstery. They assure the right stiffness to the backrest so that it doesn't tip over under the weight of the trunk and it also keeps the seat breathability. **Three backrest positions** thanks to zippers. **Net basket** on the back of the backrest.



Seat

inclined, breathable, semirigid seat with inner aluminium supports: the bars give the right stiffness and they help to the tightness of the seat without breaking by its use. The bars do not prevent the breathability of the upholstery.



Footrest

adjustable in height. Detachable for sizes 1-2-3 and also tilting for size 4.



Wheels

puncture-proof, suitable for all terrain.

Clip 1-2-3: front 15cm, swivelling; rear 20 cm, sliding on ball bearings with independent brakes.

Clip 4: front 17.5cm, swivelling; rear 25 cm, sliding on ball bearings with **independent drum brakes**.

Components



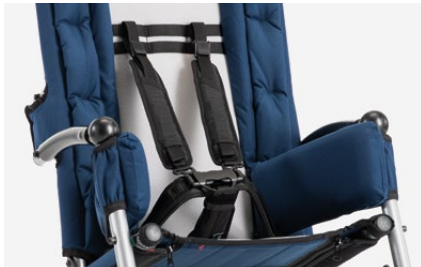
835 Headrest



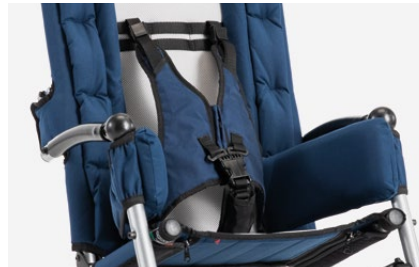
816 Lateral supports



853 Vest harness



906 Five point harness

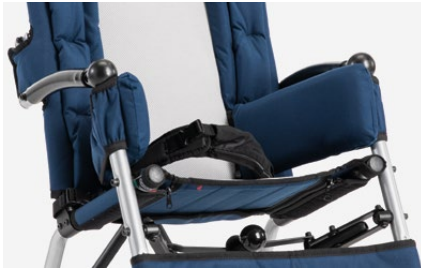


903 Five point vest harness



817 Leg straps for abduction

Components



894 45° pelvic belt



827 Foot straps



819 Canopy



818 Thermal cover



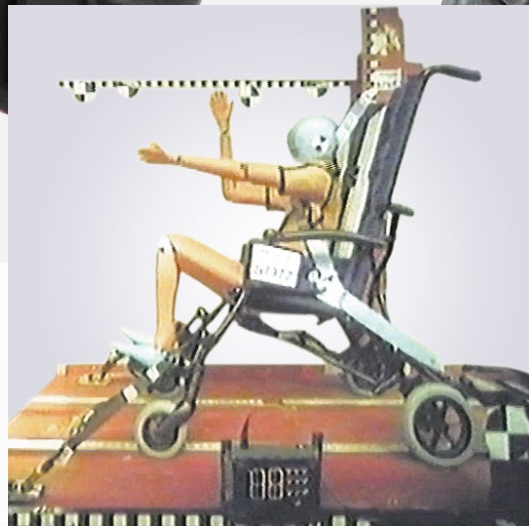
825 Rain cover
to fix to the 819 canopy.



812 Directional locks for front wheels



891 Set of 4 tie down hooks
for the forward-facing transport
of the stroller in a motor vehicle
(private/cars, buses..).
Only for Clip 1-2-3.
*See User and Maintenance Manual
provided with the aid.*



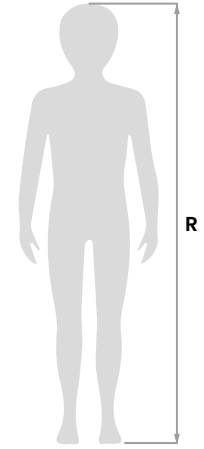
Clip 1-2-3-4 sizes and weight

	clip 1	clip 2	clip 3	clip 4
A: backrest width	40 cm ~ 15,7 in	40 cm ~ 15,7 in	40 cm ~ 15,7 in	45 cm ~ 17,7 in
B: seat bottom width	33 cm ~ 12,9 in	33 cm ~ 12,9 in	36 cm ~ 14,1 in	33 cm* ~ 12,9 in*
C: overall width	51 cm ~ 20 in	51 cm ~ 20 in	51 cm ~ 20 in	57 cm ~ 22,4 in
D: overall height	99 cm ~ 38,9 in	99 cm ~ 38,9 in	104 cm ~ 40,9 in	113 cm ~ 44,4 in
E: backrest inclination	from 0° to 12°	from 0° to 12°	from 0° to 12°	from 0° to 10°
F: seat bottom depth	25 cm ~ 9,8 in	30 cm ~ 11,8 in	35 cm ~ 13,7 in	38 cm ~ 14,9 in
G: backrest height	55 cm ~ 21,6 in	59 cm ~ 23,2 in	64 cm ~ 25,1 in	71 cm ~ 27,9 in
H: seat bottom inclination	18°	18°	18°	20°
I: ground to seat bottom height	46 cm ~ 18,1 in	48 cm ~ 18,8 in	49 cm ~ 19,2 in	59 cm ~ 23,2 in
L: seat to footrest height	from 12 to 20 cm from 4,7 to 7,8 in	from 21 to 31 cm from 8,2 to 12,2 in	from 27 to 37 cm from 10,6 to 14,5 in	from 37 to 47 cm from 14,5 to 18,5 in
M: handle to wheel distance	73 cm ~ 28,7 in	73 cm ~ 28,7 in	79 cm ~ 31,1 in	82 cm ~ 32,2 in
N: overall length	80 cm ~ 31,4 in	88 cm ~ 34,6 in	96 cm ~ 37,7 in	105 cm ~ 41,3 in
O: folded stroller length	110 cm ~ 43,3 in	110 cm ~ 43,3 in	115 cm ~ 45,2 in	115 cm ~ 45,2 in
P: folded stroller height	30 cm ~ 11,8 in	30 cm ~ 11,8 in	32 cm ~ 12,5 in	56 cm ~ 22 in
Q: folded stroller width	34 cm ~ 13,3 in	34 cm ~ 13,3 in	35 cm ~ 13,7 in	34 cm ~ 13,3 in
R: user height	from 110 to 125 cm from 43,3 to 49,2 in	from 120 to 140 cm from 47,2 to 55,1 in	from 135 to 155 cm from 53,1 to 61 in	from 150 to 175 cm from 59 to 68,8 in
Total weight	10,8 kg ~ 23,8 lb	11 kg ~ 24,2 lb	11,2 kg ~ 24,6 lb	13,5 kg ~ 29,7 lb
Max capacity	30 kg ~ 66,1 lb	35 kg ~ 77,1 lb	40 kg ~ 88,1 lb	76 kg ~ 167,5 lb

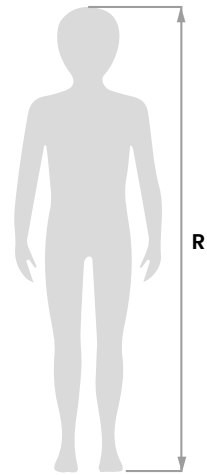
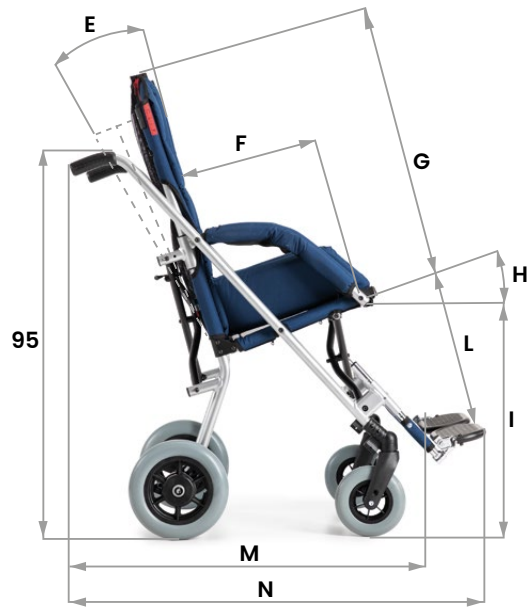
**seat width is 45 cm (17,7 in) if you remove the lateral paddings*

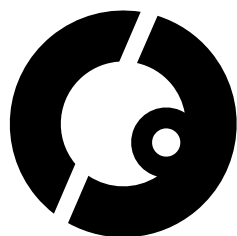


CLIP 1-2-3



CLIP 4





CE complies with MDR (EU) 2017/745

COMPANY WITH
QUALITY SYSTEM
CERTIFIED BY DNV GL
= **ISO 13485** =

Ormesa srl - Via A. Da Sangallo, 1 | 06034 Foligno (PG) - ITALY
Tel. +39 0742 22927 | FAX +39 0742 22637 | info@ormesa.com

www.ormesa.com