

BARIATRIC PRODUCTS



HMN



INDEX

INTRODUCTION.....	2
M2 200 KG, HEIGHT ADJUSTABLE.....	3
M2 200 KG SELF-PROPELLED.....	4
M2 300 KG STANDARD & WIDE.....	5
M2 200 KG WIDE EL-TIP.....	6
M2 200 KG WIDE EL-TIP WITH JOYSTICK.....	7
M2 300 KG WIDE EL-TIP.....	8
M2 MULTI-TIP BIG.....	9
M2 MULTI-TIP BIG WITH JOYSTICK.....	10
M2 200 KG JOYSTICK.....	11
M2 XXL ACCESSORIES.....	12-13
200 KG SHOWER STOOL.....	14-15
NEPTUN SUPER SOFT 300 KG SHOWER STOOL.....	16-17
FREESTANDING TOILET AID, FRIGG 200 KG.....	19
TECHNICAL DATA.....	20-28

INFO

BARIATRIC

Our products are known for their high quality as they are produced in the best possible materials. In this brochure you can read about our range of bariatric products for the larger and largest users.

You can read about our large selection of M2 Shower commode chairs. All of them have:

- Frames in stainless steel
- Soft PU foam seats
- Closed axis wheel that makes them resistant to hair and dirt
- Easy to use features
- A large selection of accessories

In addition, we have both a 200 and 300 kg height adjustable shower stools in stainless steel.

Happy reading!

M2

200 KG

HEIGHT ADJUSTABLE



HORSESHOE SEAT
Art.no. 310272

M2 200 kg has a seat width of 56 cm. The chair is made so that it can withstand a user load of max. 200 kg and yet the chair is height adjustable. The seat height can be adjusted from 46 cm to 54,5 cm. It's normally delivered with 125 mm wheels, but if it's delivered with 100 mm wheels, the seat height will range from 43,5 to 52 cm.

Despite the fact that the chair is made for larger users, we have kept the design simple so that it is easy to clean. The seat is made of soft PU foam and can easily be taken off for cleaning. The backrest and the armrest are also made of PU foam.

TECHNICAL DATA
PAGE 19

USER GUIDE

SPARE PARTS

M2 200 KG, HEIGHT ADJUSTABLE

Material	Stainless steel
Wheels	125 mm
Max. Exterior width	68 cm
Weight of chair	18,5 kg
Seat heights	46, 48, 50, 52 & 54,5 cm
Seat width	56 cm
Width between armrests	56 cm
Max. User weight	200 kg

M2 200 KG SELF-PROPELLED

HORSESHOE SEAT
Art.no. 310287

M2 200 kg self-propelled with 24" wheels has great comfort for the self-reliant user. The self-propelled wheels ensure that users who have the power can drive to and from the toilet and bathe on their own.

It is equipped with driving handles that makes the chair easy to push for the helper if needed. It is also extremely easy to clean.

The self-propelled wheels are lightweight magnesium wheels, which provide great stability—both when moving and while driving. The chair is height adjustable in 3 seat heights: 50 cm, 52 cm and 59 cm. If it is tight with the space at home, it can be delivered without handrims on the wheels. This makes the chair 3 cm narrower (Width: 70 cm)

when the user is
INDEPENDENT



TECHNICAL DATA

PAGE 19

USER GUIDE

SPARE PARTS

M2 200 KG SELF-PROPELLED

Material	Stainless steel
Wheels	Self-propelled: 24" Front wheels: 125 mm
Max. Exterior width	Without handrims: 70,5 cm With handrims: 73 cm
Weight of chair	25 kg
Seat heights	App.. 50, 52 og 59 cm
Seat width	56 cm
Width between armrests	56 cm
Max. User weight	200 kg

M2

300 KG STANDARD & WIDE



HORSESHOE SEAT, STANDARD
Art.no. 310280



HORSESHOE SEAT, WIDE
Art.no. 310284

With M2 300 kg Standard & Wide even the largest users can easily be placed and handled in toilet and shower situations. They has a fixed seat height of 56,5 cm. The chair is equipped with a PU foam seat with a width of 56 cm.

The back and armrests are also produced in PU foam, making the chairs comfortable to sit in.

The chairs is kepth in a simple design and are easy to clean. M2 300 kg Standard & Wide is fitted with 150 mm wheels, including a directional fixed wheel, making the chair very easy to maneuver.

TECHNICAL DATA
PAGE 20

USER GUIDE

SPARE PARTS

	M2 300 KG STD	M2 300 KG WIDE
Material	Stainless steel	
Wheels	150 mm	
Max. Exterior width	70 cm	80 cm
Weight of chair	20,4 kg	24,5 kg
Seat heights	56,5 cm	
Seat width	56 cm	
Width between armrests	60 cm	70 cm
Max. User weight	300 kg	

M2

200 KG WIDE EL-TIP

HORSESHOE SEAT, STANDARD
Art.no. . 310212

With M2 200 kg Wide El-Tip large users can be easily placed in a shower commode chair. The chair can handle a user weight of up to 200 kg and have 54 cm between the armrests. This allows that even large users can be lifted into the shower commode chair and be placed correctly and safely.

Despite the large user weight, the frame is still simple constructed and easy to clean. It's provided with 150 mm wheels which makes it easy to maneuver. The electrical system is ensuring a comfortable and smooth tilting for the user as well as good working environment for the helper.



TECHNICAL DATA
PAGE 21

USER GUIDE

SPARE PARTS

M2 200 KG WIDE EL-TIP

Material	Stainless steel
Wheels	150 mm
Max. Exterior width	68 cm
Weight of chair	29 kg
Seat heights	App. 58,5 cm
Seat width	56 cm
Width between armrests	56 cm
Max. User weight	200 kg

M2

200 KG

WIDE EL-TIP W. JOYSTICK

HORSESHOE SEAT
Art.no. 310289

Our new Shower Commode chairs with joystick provide a better working environment for the staff and increased independence for the user. And they are waterproof! We recommend choosing an M2 chair with joystick if you experience the following:

The staff find it difficult to drive the user around in the current shower commode chair. Here, the joystick function can act as an auxiliary engine for the staff.

You have a heavy user and it is stressful for the staff to drive a regular chair even though they are 2 people. With a joystick chair, 1 person will be enough.

If you focus on the independence of your users. A chair with Joystick will significantly increase the user's independence with regard to bath and toilet.



TECHNICAL DATA

PAGE 21

USER GUIDE

SPARE PARTS

M2 200 KG WIDE EL-TIP WITH JOYSTICK

Material	Stainless steel
Wheels	Front wheels: 150 mm Rear wheels: 200 mm
Max. Exterior width	68 cm
Weight of chair	44,4 kg
Seat heights	App. 58,5 cm
Seat width	56 cm
Width between armrests	56 cm
Max. User weight	200 kg

M2

300 KG

WIDE EL-TIP

HORSESHOE SEAT
Art.no. 310218

M2 300 kg Wide El-Tip can handle a user weight of up to 300 kg and provides 70 cm between the armrests. This allows that even the largest users can be lifted into the shower commode chair and be placed correctly and safely. Despite the large user weight, the frame is still simple constructed and easy to clean.



The electrical system is ensuring a comfortable and smooth tilting for the user as well as good working environment for the helper. The shower commode chair is provided with 150 mm wheels which makes it easy to maneuver, despite being a large in size.

TECHNICAL DATA
PAGE 22

USER GUIDE

SPARE PARTS

M2 300 KG WIDE EL-TIP

Material	Stainless steel
Wheels	150 mm
Max. Exterior width	83 cm
Weight of chair	32 kg
Seat heights	App. 61 cm
Seat width	74 cm
Width between armrests	70 cm
Max. User weight	300 kg

M2 MULTI-TIP BIG WIDE EL-TIP

HORSESHOE SEAT
Art.no. 310804-B

CAN BE DELIVERED ASSEMBLED FOR EXTRA SERVICE
CHARGE. USE PRODUCTS ART.NO. + ART.NO. 310363

With out M2 Multi-Tip Big there is room for most users. It can handle a user weight up to 200 kg and has 54 cm between the armrests. The armrests are fitted with soft PU foam and snap lock. The electric height adjustment, which is independent of the seat tip, easily provides the right working height and setting position and quickly becomes an indispensable tool for the helper. All this is done on the remote control.



It is equipped with 150 mm wheels, which increases the driveability and significantly reduces the load for the helper. The seat height can be adjusted from 55 to 101 cm, so there are options for adjusting the seat at the right height for best possible use.

TECHNICAL DATA
PAGE 23

USER GUIDE

SPARE PARTS

M2 MULTI-TIP BIG

Material	Stainless steel
Wheels	150 cm
Max. Exterior width	71 cm
Weight of chair	40,5 kg
Seat heights	App. 55–101 cm
Seat width	56 cm
Width between armrests	56 cm
Max. User weight	200 kg

M2 MULTI-TIP BIG WITH JOYSTICK

HORSESHOE SEAT
Art.no .310809

Our new M2 Shower Commode chairs with Joystick provide a better working environment for the staff and increased independence for the user. And they are waterproof! We recommend choosing an M2 chair with joystick if you experience the following: The staff experience it is difficult to drive the user around in the current bath / toilet chair. Here, the joystick function can act as an auxiliary engine for the staff.

You have a heavy user and it is stressful for the staff to drive a regular chair even though they are 2 people. With a joystick chair, 1 person will be enough.

If you focus on the independence of your users. A chair with Joystick will significantly increase the user's independence with regard to bath and toilet.



TECHNICAL DATA

PAGE 23

USER GUIDE

SPARE PARTS

M2 MULTI-TIP BIG WITH JOYSTICK

Material	Stainless steel
Wheels	Front wheels: 150 mm Rear wheels: 200 mm
Max. Exterior width	71 cm
Weight of chair	59,4 kg
Seat heights	App. 55–101 cm
Seat width	56 cm
Width between armrests	56 cm
Max. User weight	200 kg

M2 200 KG WITH JOYSTICK

HORSESHOE SEAT
Art.no. . 310274



The chair is made so it can withstand a user load of max. 200 kg. M2 200 kg Joystick is equipped with a joystick for controlled and motorized driving. It is made for the larger user, making them self-reliant and able to go to the toilet or take a shower by themselves.

In addition the helper can also drive the chair with the joystick, without having to push it. This removes the otherwise heavy load on the helpers back and shoulders. The chair easily maneuvers across carpets, tiles with deep grooves and any other difficult surfaces.

TECHNICAL DATA
PAGE 24

USER GUIDE

SPARE PARTS

M2 200 KG MOTOR

Material	Stainless steel
Wheels	Front wheel: 125 mm Rear: 200 mm
Max. Exterior width	71,5 cm
Weight of chair	30 kg
Seat heights	56,5 cm
Seat width	56 cm
Width between armrests	56 cm
Max. User weight	200 kg

M2 XXL ACCESSORIES HEADRESTS

Height & depth adjustable **HEADREST**, PU foam

Art.no. 310222



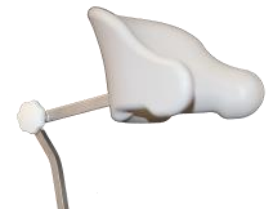
Height adjustable **HEADREST**, PU foam

Art.no. 310221



Height & depth adjustable **HEADREST**,
short bar + PU foam

Art.no. 310244



Super Soft height & depth adjustable **HEADREST**, PU foam

Art.no. 310235



Super Soft height & depth adjustable **HEADREST**,
short bar + PU foam

Art.no. 310243



Super Soft height adjustable **HEADREST**,
PU foam

Art.no. 310236



Height & depth adjustable **HEADREST**
for Multi-Tip

Art.no.: 310871



Super Soft height adjustable **HEADREST**
for Multi-Tip

Art.no.: 310870



M2 XXL

ACCESSORIES

FOOTRESTS, CALF REST, AMPUTATIONS SUPPORT, COMMODE PAN, HIPSTRAP & SIDE SUPPORTS



Reinforced height adjustable **FOOTRESTS**

Set, Art.no. 310275

CALF REST

Art.no. 310233



AMPUTATIONS SUPPORT

Right, Art.no. 800343

Left, Art.no. 800344

COMMODE PAN with lid

Art.no. 310048



HIPSTRAP

With velcro, Art.no. 330019

With buckle Art.no. 800404

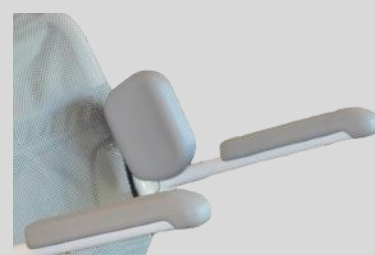
SIDE SUPPORTS

Right, Art.no. 310225

Left, Art.no. 310224

Multi-Tip, Right, Art.no. 310225

Multi-Tip, Left, Art.no. 310224



M2 XXL

ACCESSORIES

URINE FUNNEL, SPLASH GUARD, SEAT & LID



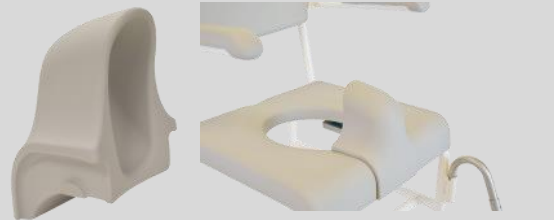
URINE FUNNEL

Art.no. 148861

M2 SPLASH GUARD

Art.no. 148862

Doesn't fit M2 300 kg Wide El-Tip



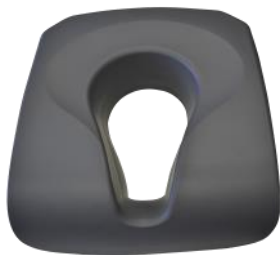
STANDARD SEAT for M2 200 kg, M2 300 kg Standard,
M2 300 kg Bred & M2 Multi-Tip Big

Art.no. 310372

SUPERSOFT FOAM SEAT

With hole, Art.no. 330018

Without hole, Art.no. 330022



PRESSURE-RELIEF SEAT

Art.no. 330023

FULL FOOTPLATES FOR M2 FODRESTS + NEOPREN

Art.no. 310762, Wide

Art.no. 310763, Neopren Wide

Art.no. 310764, 300 kg El-Tip

Art.no. 310765, Neopren 300 kg El-Tip



LID for Horseshoe seat

Art.no.: 310343



200 KG SHOWER STOOL

Art.no., steel

310145-2



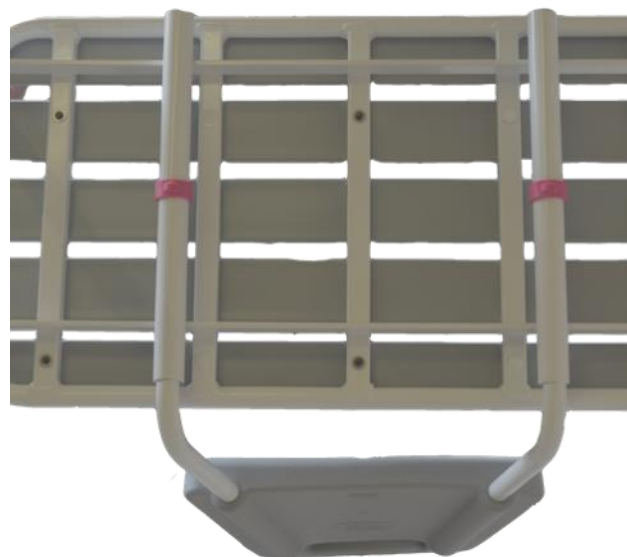
200 kg shower stool is made for large individuals and users that require additional space.

The 70 cm seat width makes it big enough to accommodate most sizes of person comfortably. It has been specially designed to carry a max. Load of 200 kg.

The height of the stainless steel telescoping legs is adjustable with three seat heights:

47, 50 and 53 cm

The back has a new look and we have therefore replaced it with a cushion in soft PU foam. The back can easily be removed and turned without any tools with continuous clamps.



The height of the shower stool is adjusted by means of continuous clips. The back is attached using two clips.

200 KG SHOWER STOOL INFOBOX

	200 kg shower stool
Material	Frame: Stainless steel, Seat: Plastic lamella
Seat width	70 cm
Seat depth	36,5 cm
Max user weight	200 kg
Weight of product	9,5 kg
Height adjustments (seat)	44 cm—47 cm—50 cm—53 cm

[VIEW FULL TECHNICAL
DATA PAGE 25](#)



200 KG SHOWER STOOL ACCESSORIES

BACK TO
200 KG SHOWER STOOL



Art. No.: 300301

[USER GUIDE](#)

[SPARE PARTS](#)

NEPTUN SUPER SOFT 300 KG



Art.No., steel

300300

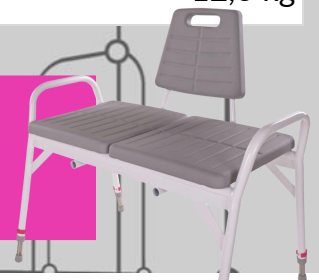
Neptun Super Soft 300 kg shower stool is made to fit larger users with the need of more space. The seat width of 75 cm meets the requirements of most users. Reinforced to handle a max. Load of 300 kg, and the stool is made entirely in stainless steel. The stainless telescopic legs provide the shower stool with the height adjustment in 3 levels: 49, 52 and 55 cm. It is height adjustable via clips and without any use of tools.

The seat and backrest is made in very soft PU foam and the two seat can easily be detached and cleaned in an autoclave. The backrest can easily be mounted without the use of tools.

NEPTUN SUPER SOFT 300 KG INFOBOX

	Neptun Super Soft 300 kg
Material	Frame: Stainless steel, Seat: PU-foam
Seat width	75 cm
Seat depth	36,5 cm
Seat height	49 cm—52 cm—55 cm
Max. User weight	300 kg
Weight of product	12,6 kg

[VIEW FULL TECHNICAL DATA](#)
[PAGE 26](#)



NEPTUN SUPER SOFT 300 KG ACCESSORIES

BACK TO NEPTUN
SUPER SOFT 300 KG



Art.No.. 300301

[USER GUIDE](#)

[SPARE PARTS](#)

FREESTANDING TOILET AID

FRIGG, 200 KG 61 CM

FRIGG 200 KG

Art.no. 610014

SPLASH GUARD:

Art.no. 610021

BUCKET

Art.no. 610022



The free-standing toilet aid Frigg 200 Kg is reinforced so that it can handle a user weight of up to 200 kg. It is produced in stainless steel to make it as long-lasting as possible. It is built very simply, so it is easy to clean.

It is equipped with telescopic legs in stainless steel and it is height-adjustable with a seat height of 45-57 cm. The height is easily adjusted without the use of tools using clips.

It can be supplied with a splash guard or bucket.

TECHNICAL DATA

FRIGG 200 KG	
SEAT HEIGHTS	45-57 CM
TOTAL HEIGHT	90-101 CM
WIDTH BETWEEN ARMRESTS	61 CM
FREE HEIGHT UNDER TOILET SEAT	40-52 CM
WIDTHS AT FLOOR	74-76 CM
DEPTH AT FLOOR	45,5-47,5 CM
TILT POSITIONING	MAX. 3 CM IN DIFFERENCE (1 HOLE)
WEIGHT	9 KG
STACKABLE	NO
MAX. BELASTNING	200 KG
SPLASH GUARD OR BUCKET INCL.	NO NO (PLEASE STATE IF YOU WANT BUCKET OR SPLASH GUARD WHEN ORDERING) ADJUST THE HEIGHT OF THE SPLASH GUARD BY CUTTING IF IT IS TOO HIGH FOR THE TOILET
FRAME	STAINLESS STEEL, POWDER COATED WHITE
TELESCOPIC LEGS	STAINLESS STEEL 5 POSITIONS
TOILET SEAT	IN SOLID WHITE PLASTIC
RUBBER SHOES	GREY PLASTIC, WITH A HOLE IN THE BOTTOM
CLEANING	USE ONLY A MILD SOAP SOLUTION. DO NOT USE ABRASIVE, CORROSIVE CHLORINE BASED PRODUCTS TO CLEAN THE PRODUCT
DESCRIPTION	FREESTANDING TOILET AID FRIGG WITHOUT SPLASH GUARD/BUCKET
ART.NO.	610014
ISO NR.:	09 12 12
SPLASH GUARD	610021
BUCKET	610022

USER GUIDE

M2

200 KG

HEIGHT ADJUSTABLE & SELF-PROPELLED

TECHNICAL DATA

	M2 200 KG HEIGHT ADJUSTABLE	M2 200 KG SELF-PROPELLED
SEAT HEIGHTS	46–48–50–52–54,5 CM	50–52–59 CM
SEAT WIDTH		56 CM
SEAT DEPTH		44 CM
MAX. HEIGHT	87–89 - 91–93–95,5 CM	90–92–99 CM
MAX. WIDTH	68 CM	73 CM
SPACE BETWEEN THE ARMRESTS	56 CM	56 CM
CLEARANCE UNDER THE SEAT	36,5 - 38,5 - 40,5 - 42,5 - 45 CM	41–43–49 CM
LENGTH (WITHOUT THE FOOTRESTS)	68,5 CM	77 CM
WEIGHT	18,5 KG	25 KG
MAX. LOAD		200 KG
WHEELS	125 MM WHEELS W/GREY RUBBER AND BALL BEARINGS. DEOUBLE ACTING BRAKE ON 3 WHEELS, 1 DIRECTION STEERED WHEELS.	FRONT WHEELS: 125 MM WHEELS W/GREY RUBBER DOUBLE ACTING BRAKES AND BEARINGS. REAR WHEELS: 24" MAGNESIUM WHEELS WITH THREE SPOKES
HEIGHT ADJUSTABLE	TELESCOPIC STAINLESS STEEL WITH 5 SETTINGS. THE HEIGHT IS ADJUSTED BY MEANS OF CLIPS (NO TOOLS)	FRONT WHEELS: IS ADJSUTED USING CLIPS (NO TOOLS) SELF-PROPELLED WHEELS: 3 HEIGHT SETTINGS, REAR WHEELS USING WRENCH. BRAKES USING ALLEN KEY.
BACKREST	39 X 20 CM, PU FOAM	39,5 X 25,5 CM, PU FOAM
SEAT & COVER		SEAT: 4,5 CM PU FOAM ARMREST: 2,5 CM PU FOAM BACKREST: 3 CM PU FOAM
SURFACE/METAL		STAINLESS STEEL, POWDER COATED

DESCRIPTION

Art.No

M2 200 KG, HEIGHT ADJUSTABLE

310272

M2 200 KG SELF-PROPELLED

310287

ISO-NUMBER

09 12 03

[BACK TO](#)
[PAGE 3-4](#)

M2 300 KG STANDAG & WIDE

TECHNICAL DATA

	M2 300 KG STANDARD	M2 300 KG WIDE
SEAT HEIGHTS	56,5 CM	
SEAT WIDTH	56 CM	
SEAT DEPTH	44 CM (50 CM TO BACK)	
MAX. HEIGHT	96 CM	
MAX. WIDTH	70 CM	80 CM
SPACE BETWEEN	60 CM	70 CM
CLEARANCE UNDER THE SEAT	51 CM	
LENGTH	63 CM	
WEIGHT	20,4 KG	24,5 KG
MAX. LOAD	300 KG	
WHEELS	150 MM WHEELS W/GREY RUBBER AND BALL BEARINGS, DOUBLE ACTING BRAKES ON 3 WHEELS, 1 DIRECTIONAL FIXED WHEEL	
HEIGHT ADJUSTABLE	NO	
BACKREST	39 X 20 CM PU FOAM	
SEAT & COVER	SEAT: 4,5 CM PU FOAM ARMREST: 2,5 CM PU FOAM	
SURFACE/METAL	STAINLESS STEEL, POWDER COATED	
DESCRIPTION:		Art.No
M2 300 KG STANDARD		310280
M2 300 KG WIDE		310284
ISO-NUMBER	09 12 03	

[BACK TO
PAGE 5](#)

M2

200 KG WIDE EL-TIP WITH & WITHOUT JOYSTICK

TECHNICAL DATA

	M2 200 KG WIDE EL-TIP	M2 200 KG WIDE EL-TIP W. JOYSTICK
SEAT HEIGHTS		58,5 CM
SEAT WIDTH		56 CM
SEAT DEPTH		44 CM
MAX. HEIGHT		105 CM
MAX. WIDTH		68 CM
SPACE BETWEEN THE ARMRESTS		56 CM
CLEARANCE UNDER THE SEAT		53 CM
LENGTH	74 CM	70 CM
WEIGHT	29 KG	44,4 KG
MAX. LOAD		200 KG
SEAT ANGLE IN DEGREES	5° FORWARD TO 30° BACKWARDS	
WHEELS	150 MM WHEELS W/GREY RUBBER AND BALL BEARINGS. DOBULE ACTING BRAKES ON 3 WHEELS, 1 DIRECTIONAL FIXED WHEEL.	FRONT: 150 MM WHEELS W/GREY RUBBER AND BALL BEARINGS. REAR: 200 MM SOLID WHEELS, ARMED ENGINE
HEIGHT ADJUSTABLE		NO
BACKREST		30 X 53,5 CM DEPTH ADJUSTMENT UP TO 10 CM. THE NET FABRIC WITH SEWN WEBBING AND 4 BUCKLES FOR DEPTH ADJUSTMENT
SEAT & COVER		SEAT: 4,5 CM PU FOAM ARMREST: 2,5 CM PU FOAM
ELECTRIC MOTOR/ BATTERY SYSTEM	BATTERIES CAN USUALLY DRIVE THE CHAIR 30-40 TIMES BACK AND FORTH. STEPLESS BLOCKED ACTUATOR EL-TIGHTNESS = IP66 (DUSTTIGHT AND PROTECTED AGAINST WATER BEAMS)	GEARED MOTORS, CONTROL BOX, BATTERY AND JOYSTICK. JOYSTICK WITH BATTERY INDICATOR. EL-SEALINGSLEVELS = IP65 (PROTECTED FROM LOW PRESSURE WATER JETS FROM ANY DIRECTION. LIMITED INGRESS PROTECTION)
SURFACE/METAL		STAINLESS STEEL, POWDER COATED
DESCRIPTION:		Art.No
M2 200 KG WIDE EL-TIP		310212
M2 200 KG WIDE EL-TIP W. JOYSTICK		310289
ISO-NUMBER		09 12 03

[BACK TO
PAGE 6-7](#)

M2 300 KG WIDE EL-TIP

TECHNICAL DATA

	M2 300 KG WIDE EL-TIP
SEAT HEIGHTS	61 CM (No lid available)
SEAT WIDTH	75 CM
SEAT DEPTH	46 CM
MAX. HEIGHT	104 CM
MAX. WIDTH	83 CM
SPACE BETWEEN THE ARMRESTS	70 CM
CLEARANCE UNDER THE SEAT	54 CM
LENGTH (WITHOUT THE FOOTRESTS)	83 CM
WEIGHT	32 KG
MAX. LOAD	300 KG
SEAT ANGLE IN DEGREES	8° FORWARD TO 28° BACKWARDS
WHEELS	150 MM WHEELS W/GREY RUBBER AND BALL BEARINGS. DOBULE ACTING BRAKES ON 3 WHEELS, 1 DIRECTIONAL FIXED WHEEL.
HEIGHT ADJUSTABLE	NO
BACKREST	30 X 70 CM DEOTH ADJUSTMENT UP TO 10 CM. THE NET FABRIC WITH SEWN WEBBING AND 4 BUCKLES FOR DEPTH ADJUSTMENT
SEAT & COVER	SEAT: 5,5 CM PU FOAM ARMREST: 2,5 CM PU FOAM
ELECTRIC MOTOR/ BATTERY SYSTEM	BATTERIES CAN USUALLY DRIVE THE CHAIR 50+ TIMES BACK AND FORTH. STEPLESS BLOCKED ACTUATOR EL-TIGHTNESS = IP66 (DUSTTIGHT AND PROTECTED AGAINST WATER BEAMS)
SURFACE/METAL	STAINLESS STEEL, POWDER COATED

DESCRIPTION:

Art.No

M2 300 KG WIDE EL-TIP

310218

ISO-NUMBER

09 12 03

[BACK TO](#)
[PAGE 8](#)

M2 MULTI-TIP BIG WITH & WITHOUT JOYSTICK

TECHNICAL DATA

	M2 MULTI-TIP BIG	M2 MULTI-TIP BIG W. JOYSTICK
SEAT HEIGHTS	55–101 CM	
SEAT WIDTH	56 CM	
SEAT DEPTH	44 CM	
MAX. HEIGHT	154 CM	
MAX. WIDTH	71 CM	
SPACE BETWEEN THE ARMRESTS	56 CM	
CLEARANCE UNDER THE SEAT	49,5–95,5 CM	
LENGTH (WITHOUT THE FOOTRESTS)	82 CM (112 CM WITH FOOTRESTS))	
WEIGHT	40,5 KG	55,9 KG
MAX. LOAD	200 KG	
SEAT ANGLE IN DEGREES	5° FORWARD TO 30° BACKWARDS	
WHEELS	150 MM WHEELS W/GREY RUBBER AND BALL BEARINGS. DOBULE ACTING BRAKES ON 3 WHEELS, 1 DIRECTIONAL FIXED WHEEL.	FRONT: 150 MM WHEELS W/GREY RUBBER AND BALL BEARINGS. REAR: 200 MM SOLID WHEELS, ARMED ENGINE
HEIGHT ADJUSTABLE	YES	NO
BACKREST	53 X 43,5 CM. DEPTH ADJUSTMENT UP TO 10 CM. NETWEAVE ADJSUTABLE WITH 4 BUCKLES FOR DEPTH ADJUSTMENT. WASHABLE	
ELECTRIC MOTOR / BATTERI SYSTEM	CONTINUOUSLY VARIABLE BLOCKABLE ENGINE. SURFACE TREATED METAL. THE BATTERIES CAN NORMALLY OPERATE UP AND DOWN 50+ TIMES BEFORE BEING RECHARGED. EL-TIGHTNESS = IP66 (DUSTPROOF AND PROTECTED AGAINST WATER BEAMS) GEARED MOTORS, CONTROL BOX, BATTERY AND JOYSTICK. JOYSTICK WITH BATTERY INDICATOR. EL-SEALINGSLEVELS = IP65 (PROTECTED FROM LOW PRESSURE WATER JETS FROM ANY DIRECTION. LIMITED INGRESS PROTECTION)	
SURFACE/METAL	RUSTFRIT STÅL. PULVERLAKERET.	
DESCRIPTION:		Art.No
M2 MULTI-TIP BIG, HORSESHOE SEAT		310804-B
M2 MULTI-TIP BIG W. JOYSTICKHORSESHOE SEAT		310809
THE CHAIR CAN BE DELIVERED ASSEMBLED FOR EXTRA SERVICE CHARGE. USE THE PRODUCTS ART.NO. + ART.NO.		310363
ISO-NUMBER	09 12 03	

[BACK TO
PAGE 9-10](#)

M2 200 KG JOYSTICK

TECHNICAL DATA

	M2 200 JOYSTICK
SEAT HEIGHT	56,5 CM
SEAT WIDTH	56 CM
SEAT DEPTH	44 CM
MAX. HEIGHT	96,5 CM
MAX. WIDTH	71,5 CM
SPACE BETWEEN THE ARMRESTS	56 CM
CLEARANCE UNDER THE SEAT	51 CM
LENGTH (WITHOUT THE FOOTRESTS)	71 CM
WEIGHT	30 KG
MAX. USER LOAD	200 KG
WHEELS	FRONT: 150 MM WHEELS W/GREY RUBBER AND BALL BEARINGS. REAR: 200 MM SOLID WHEELS, ARMED ENGINE
HEIGHT ADJUSTABLE	NO
BACKREST	39 X 20 CM PU FOAM
SEAT & COVER	SEAT: 5,5 CM PU FOAM ARMREST: 2,5 CM PU FOAM
ELECTRIC MOTOR / BATTERY SYSTEM	GEARED MOTORS, CONTROL BOX, BATTERY AND JOYSTICK. JOYSTICK WITH BATTERY INDICATOR. EL-SEALINGSLEVELS = IP65 (PROTECTED FROM LOW PRESSURE WATER JETS FROM
SURFACE/METAL	STAINLESS STEEL, POWDER COATED
DESCRIPTION:	Art.No
M2 200 KG JOYSTICK HORSESHOE SEAT	310274
ISO-NUMBER	09 12 03

[BACK TO](#)
[PAGE 11](#)

M2 200 KG SHOWER STOOL

TECHNICAL DATA

200 KG SHOWER STOOL

SEAT HEIGHT	44–47–50–53 CM
MAX. TOTAL HEIGHT	67 CM
MIN. TOTAL HEIGHT	61 CM
SEAT WIDTH	70 CM
MAX. WIDTH AT FLOOR	83 CM
MIN. WIDTH AT FLOOR	82 CM
SEAT DEPTH	36,5 CM
MAX. DEPTH AT FLOOR	48 CM
MIN. DEPTH AT FLOOR	46 CM
WEIGHT OF PRODUCT	9,4 KG
MAX. USER LOAD	200 KG

SURFACE TREATMENT POWDER COATED, WHITE

SEAT PLASTIC SLATES 60 MM WIDTH AND 6 MM THICK.

RUBBER FEETS NON SLIP TECHNICAL GREY RUBBER—NO MARKS NO THE FLOOR.
HOLE IN THE RUBBER FEET FOR OURFLOW OF WATER.

TELESCOPIC LEGS STAINLESS STEEL, 3 LEVELS OF HEIGHTS AT 3 CM INTERVALS.
ADJUSTABLE BY CLIPS

DESCRIPTION:

Art.No

200 KG SHOWER STOOL

310145-2

ISO-NUMBER

09 12 03

[BACK TO
PAGE 15-16](#)

M2 300 KG SHOWER STOOL

TECHNICAL DATA

NEPTUN 300 KG
SUPER SOFT

SEAT HEIGHT	49–52–55 CM
MAX. TOTAL HEIGHT	67 CM
MIN. TOTAL HEIGHT	61 CM
SEAT WIDTH	75 CM
MAX. WIDTH AT FLOOR	86 CM
MIN. WIDTH AT FLOOR	85 CM
SEAT DEPTH	40 CM
MAX. DEPTH AT FLOOR	58 CM
MIN. DEPTH AT FLOOR	56 CM
WEIGHT OF PRODUCT	12,6 KG
MAX. USER LOAD	300 KG

SURFACE TREATMENT POWDER COATED, WHITE

SEAT PU FOAM

RUBBER FEETS NON SLIP TECHNICAL GREY RUBBER—NO MARKS NO THE FLOOR.
HOLE IN THE RUBBER FEET FOR OURFLOW OF WATER.

TELESCOPIC LEGS STAINLESS STEEL, 3 LEVELS OF HEIGHTS AT 3 CM INTERVALS.
ADJUSTABLE BY CLIPS

DESCRIPTION:

Art.No

NEPTUN SUPER SOFT
300 KG SHOWER STOOL

300300

ISO-NUMBER 09 12 03

[BACK TO](#)
[PAGE 17-18](#)

HMN

SINCE 1934

V 1.3