

M2 TIP

SHOWER/ COMMODE CHAIRS



HMN

CE

WWW.HMN.DK/EN

INDEX

INTRODUCTION.....	2
STANDARD ON M2 TIP.....	3-4
M2 GAS-TIP.....	5
M2 EL-TIP.....	6
M2 GAS-TIP WITH HIGH NETWEAVE BACK.....	7
M2 EL-TIP WITH HIGH NETWEAVE BACK.....	8
M2 200 KG WIDE EL-TIP.....	9
M2 300 KG WIDE EL-TIP.....	10
M2 EL-TIP WITH JOYSTICK.....	11
M2 TIP ACCESSORIES.....	12-17
BOXED.....	18
TECHNICAL DATA.....	19-22

INFO

M2 TIP

Our M2 shower commode chairs are all equipped with an electric tip or gas- spring tip which can provide optimal sitting position for the user and therefore be beneficial for both user and helper.

HMNs chairs are well known for their high quality and are produced in the best materials and this counts for the M2 Tip chairs as well:

- Frames in stainless steel
- Seats in PU foam
- Massive telescopic legs in stainless steel
- Wheels with a closed axis, making them resistant to hair and dirt
- Easy to use function
- A wide selection of accessories to ensure the best adaptations for the individual user

We have many different M2 Tip shower commode chairs in our assortment which you can read about in the brochure.

STANDARD ON

M2 Tip

Give elderly and disabled people a better and more dignified care with M2 Tip.

M2 Tip models are flexible shower/ commode chairs that can easily be adjusted the in seat angle.

The forward tip is particularly suitable for users who have little standing function. This helps users to get up and stand and easier to sit.

The tip function is variable which ensures that the user can always get the right posture. This provides greater security for the users with poor balance, and also ensures better working position for the helper.

Seat and cover



For all the chairs which can carry users up to 140 kg you can choose between a standard seat or a horseshoe seat. The M2 200 kg Wide El- Tip comes with a horseshoe seat, but it's possible to get a special made standard seat (you can find that in accessories). M2 300 kg Wide El-Tip only comes with horseshoe seat.



The horseshoe seat makes access in the front easier, while the standard seat provides support in the front, making it ideal for users with thin legs. Both seats are made of soft PU foam and has a built-in holder for the commode pan.



All chairs come without a lid which covers the whole seat. The lid is made of PU foam and are adapted to fit the seats. It provides a better comfort for the user during shower use.

Notice! It's not possible to get a lid for the M2 300 kg Wide El- Tip

STANDARD ON

M2 Tip

Backrest

The backrest is made on netweave so that water can penetrate.

It is adjustable in depth through straps that makes it adaptable to the individual user. This allows users with scoliosis optimal support over the entire back.



Armrests

The armrests are fitted with snap lock, ensuring that they can't be folded up with the lock being released by the helper.

The snap lock automatically locks the armrest then they are down.

Wheels

The chairs are fitted with 125 mm wheels which have a closed axis. This reduces the risk of hair and dirt to enter the axis.

It is possible to get the chairs with 100mm wheels with lower seat height to follow.

The front right wheel is a directional fixed wheel that can be locked in direction of travel (is marked with diferent color) This wheel can now only go straight forward. This secures that the chair will be easy to maneuver and push.

Notice! M2 200 kg Wide El- Tip and 300 kg Wide El- Tip is only available with 150 mm wheels.



M2 GAS-TIP

STANDARD SEAT
Art. No.: 310201

BOXED: Art. No.: 310201-B

HORSESHOE SEAT
Art. No.: 310202

BOXED: Art. No.: 310202-B



M2 Gas-Tip has a gas spring which supports the helper when user needs to be tilted backwards and forward. The gas spring supports the way of movement from tilted to horizontal position.

This provides incredible ease of use, even for heavier users.



For users who are always being lifted, the forward tip may be undesirable. Therefore we offer a bracket that ensures that the chair cannot tip forward. The bracket is easily mounted on the front of the frame and stops the movement when the seat is in level position.

Bracket to avoid negative tip: Art.no. 800251

M2 GAS-TIP

Material	Stainless steel
Wheels	125 mm
Max. Exterior width	57 cm
Weight of chair	21 kg
Seat heights	App. 55,5–61,5 cm <i>Notice:</i> Seat lid increase the height with 1,5 cm
Seat width	46,5 cm
Width between armrests	46 cm
Max. User weight	140 kg

TECHNICAL DATA
PAGE 19

USER GUIDE

SPARE PARTS

WWW.HMN.DK/EN

M2 EL-TIP

STANDARD SEAT
Art. No.: 310210

BOXED: Art. No.: 310210-B

HORSESHOE SEAT
Art. No.: 310211

BOXED: Art. No.: 310211-B



With **M2 El-tip** the user is ensured the same experience when being tilted every time.

With the electric tilt the helper will be able to focus on the user during tilting, because the tilting itself doesn't require any special attention as it's handled by the hand control.

The hand control is easy to operate and can be used by both right and left hand.

M2 EL-TIP

Material	Stainless steel
Wheels	125 mm
Max. Exterior width	59 cm
Weight of chair	25,8 kg
Seat heights	App. 55,5–61,5 cm <i>Notice:</i> Seat lid increase the height with 1,5 cm
Seat width	46,5 cm
Width between armrests	46 cm
Max. User weight	140 kg

TECHNICAL DATA
PAGE 19

USER GUIDE

SPARE PARTS

WWW.HMN.DK/EN

M2 GAS TIP WITH HIGH NETWEAVE

STANDARD SEAT

Art. No.: 310621

BOXED: Art. No.: 310621-B,

HORSESHOE SEAT

Art. No.: 310622

BOXED: Art. No.: 310622-B

M2 Gas-Tip with high netweave back is ideal if there is a wish to adjust the backrest to the user needs. As an example this could be a user with scoliosis.

The netweave doesn't absorb water and the perforated material makes sure the skin is able to breath.



The flexible backrest can be adjusted in three positions, allowing users with curvatures of the spine to get optimal support across the back.



M2 GAS-TIP WITH HIGH NETWEAVE BACK

Material	Stainless steel
Wheels	125 mm
Max. Exterior width	57 cm
Weight of chair	22 kg
Seat heights	App. 55,5–61,5 cm Notice: Seat lid increase the height with 1,5 cm
Seat width	46,5 cm
Width between armrests	46 cm
Max. User weight	140 kg

TECHNICAL DATA
PAGE 20

USER GUIDE

SPARE PARTS

WWW.HMN.DK/EN

M2 EL-TIP WITH HIGH NETWEAVE

STANDARD SEAT
Art. No.: 310608

BOXED: Art. No.: 310608-B

HORSESHOE SEAT
Art. No.: 310609

BOXED: Art. No.: 310609-B

M2 El-tip with high netweave back is ideal if there is a wish to adjust the shower/ commode chair and backrest to the user needs.

It is provided with an electric tip which ensures the same experience when being tilted every time.



The flexible backrest can be adjusted in three positions, allowing users with curvatures of the spine to get optimal support across the back.

M2 GAS-TIP WITH HIGH NETWEAVE BACK

Material	Stainless steel
Wheels	125 mm
Max. Exterior width	59 cm
Weight of chair	26,8 kg
Seat heights	App. 55,5–61,5 cm <i>Notice:</i> Seat lid increase the height with 1,5 cm
Seat width	46,5 cm
Width between armrests	46 cm
Max. User weight	140 kg

TECHNICAL DATA
PAGE 20

USER GUIDE

SPARE PARTS

M2 200 KG WIDE EL-TIP

HORSESHOE SEAT

Art. No.: 310212

With **M2 200 kg Wide El-Tip** large users can easily be placed in a shower/ commode chair. The chair can handle a user weight up to 200 kg and have 54 cm between the armrests. This allows that even large users can be lifted into the shower/ commode chair and be placed correctly and safely.

Despite the large user weight, the frame is still simple constructed and easy to clean. It's provided with 150 mm wheels which makes it easy to maneuver .

The electrical system is ensuring a comfortable and smooth tilting for the user as well as a good working environment for the helper.



M2 200 KG WIDE EL- TIP

Material	Stainless steel
Wheels	150 mm
Max. Exterior width	65 cm
Weight of chair	29 kg
Seat height	App. 58,5 cm Notice: Seat lid increase the height with 1,5 cm
Seat width	56 cm
Width between armrests	54 cm
Max. User weight	200 kg

TECHNICAL DATA
PAGE 21

USER GUIDE

SPARE PARTS

WWW.HMN.DK/EN

M2 300 KG WIDE EL-TIP

HORSESHOE SEAT

Art. No.: 310218

M2 300 kg Wide El-Tip can handle a user weight up to 300 kg and provides 70 cm between the armrests.

This allows that even large users can be lifted into the shower/ commode chair and be placed correctly and safely. Despite the large user weight, the frame is still simple constructed and easy to clean.



It can be tipped 28° degree backwards, so it is easy to find the right sitting position to the user.

The seat height is 61 cm and the chair is provided with 150 mm wheels which makes it easy to maneuver.

M2 300 KG WIDE EL- TIP

Material	Stainless steel
Wheels	150 mm
Max. Exterior width	83 cm
Weight of chair	32 kg
Seat height	App. 61 cm <i>Notice:</i> No seat lid available
Seat width	74 cm
Width between armrests	70 cm
Max. User weight	300 kg

TECHNICAL DATA
PAGE 21

USER GUIDE

SPARE PARTS

M2 EL-TIP WITH JOYSTICK

STANDARD SEAT, BOXED

Art. No.: 310204-B

HORSESHOE SEAT, BOXED

Art. No.: 310205-B

CAN BE DELIVERED ASSEMBLED FOR EXTRA SERVICE CHARGE. USE PRODUCTS ART. NO.+ ART. NO. 310363

M2 El-tip with joystick can handle a user weight up to 150 kg. The chair is equipped with a joystick for controlled and motorized driving and a hand control for the lifting.



It is very user friendly, making the user self-reliant and able to go to the toilet or shower by themselves. In addition, the helper can also drive with the joystick without having to push.

The helper will also be able to focus on the user during tilting, because tilting itself doesn't require any special attention as it is done with the hand control.

M2 EL-TIP MED JOYSTICK

Material	Stainless steel
Wheel	Front: 125 mm Rearl: 200 mm
Max. Exterior width	71,5 cm
Weight of chair	41,2 kg
Seat hights	App. 56,5 cm Notice: Seat lid increase the height with 1,5 cm
Seat width	46,5 cm
Width between armrests	46 cm
Max. User weight	140 kg

TECHNICAL DATA
PAGE 22

USER GUIDE

SPARE PARTS

M2 TIP

ACCESSORIES

HEADRESTS



Height & depth adjustable **HEADREST**, PU foam

Varenr. 310222

Height adjustable **HEADREST**, PU foam

Varenr. 310221



Height & depth adjustable **HEADREST**,

Short bar, PU foam

Varenr. 310244

Super Soft height & depth adjustable **HEADREST**,
PU foam

Varenr. 310235



Super Soft height & depth adjustable **HEADREST**,

short bar, PU foam

Varenr. 310243

Super Soft height adjustable **HEADREST**,
PU foam

Varenr. 310236



M2 TIP

ACCESSORIES

FOOTRESTS, CALF SUPPORT, LEGREST, AMPUTATION SUPPORT & FULL FOOTPLATES

HEIGHT & ANGLE adjustable **FOOTRESTS**

Art. No.: 313041



Height adjustable **FOOTRESTS**

(39-51 cm from the tip of the seat to the footrest plate)

Standard: Art. No.: 310049 (39–51 cm)

Short, art. No.: 310510 (31–41 cm)

Extended, art. No.: 310283 (49–61 cm)

Reinforced, art. No.: 310275 (39–51 cm)

CALFREST

Art. No.: 310226

XXL Art. No.: 310233



FOOTREST PLATE

Right, art. No.: 310085

Left art. No.: 310086



EXSTRA CALFREST

Art. No.: 310358



LEG REST

Right, art. No.: 310053

Left art. No.: 310054



AMPUTATIONSSUPPORT

Right, art. No.: 800343

Left art. No.: 800344

FULL FOOTPLATES M2 FODRESTS + NEOPREN

Art.no. 310760, Standard

Art.no. 310761, Neopren Standard

Art.no. 310762, Wide

Art.no. 310763, Neopren Wide

Art.no. 310764, 300 kg El-Tip

Art.no. 310765, Neopren 300 kg El-Tip



M2 TIP

ACCESSORIES

ARMRESTS & SIDE SUPPORTS



Hemi ARMREST

Set, art. No.: 800275
Right, art. No.: 800274
Left art. No.: 800273

ARMREST with increased width

STANDARD CHAIRS

One armrest gives increase of 3 cm

Right, art. No.: 310391

Left art. No.: 310392

WIDE CHAIRS

One armrest gives increase of 4 cm

Right, art. No.: 310364

Left art. No.: 310365



ARMREST with reduced width

One armrest reduced width with 2,5 cm

Right, art. No.: 310394

Left art. No.: 310395

ARMREST with reduced height (5 cm)

Right, art. No.: 310397

Left art. No.: 310398



SIDE SUPPORT

Right, art. No.: 310225

Left art. No.: 310224

M2 TIP

ACCESSORIES

HIPBELT, CROSSBAR, COMMODE PAN & URINE FUNNEL



HIP-STRAP w. velcro

Varenr. 330019

HIP-STRAP w. click

Varenr. 800404

CROSS BAR

Cross bar for M2 El-Tip w. Joystick + Multi-Tip w. Joystick

Art. No: 310228

Cross bar for Multi-Tip Big 200 kg

Varenr. 310249

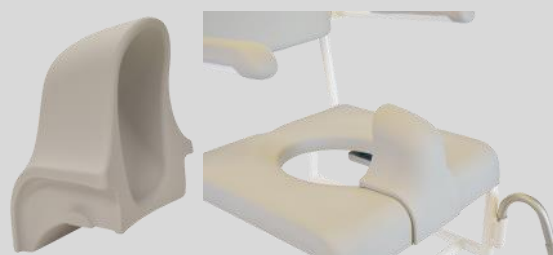


COMMODE PAN with lid

Art. No.: 310048

M2 SPLASH GUARD

Art. No.: 148862



URINE FUNNEL

Art. No.: 148861

M2 TIP ACCESSORIES SEATS

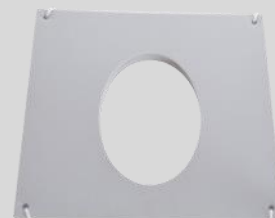


TOILET SEAT
Art. No.: 330024

SUPERSOFT GREY FOAM SEAT

With hole, Art. No.: 330018

Without hole, Art. No.: 330022



SEATPLATE with small hole
Art. No.: 800178

WHITE FOAM SEAT

Art. No.: 330016



PRESSURE- RELIEF SEAT
Art. No.: 330023

M2 TIP

ACCESORRIES

SÆDER, TORSO SUPPORT & SOFT RYG



STANDARD SEAT, LONGER SEAT

for M2/ Nielsen Line

Art. No.: . 310373

STANDARD SEAT WITH LESS WIDE HOLE

for M2/ Nielsen Line

Art. No.: 310374



HORSESHOE SEAT WITH LESS WIDE HOLE

for M2/ Nielsen Line

Art. No.: 310375

LONGER HORSESHOE SEAT

for M2/ Nielsen Line

Art. No.: 310376



TORSO SUPPORT

Std. Cushion, art.no. 310245

Std. Cover, art.no. 310246

SOFT BACKREST (Only for chairs with netweave backrest)

Art. No.: 800850

Doesn't fit XXL chairs



M2 BOXED

Most of our shower/ commode chairs can be delivered Boxed. The chair is delivered unassembled and in a significantly smaller box than an assembled chair.

When the chair is delivered Boxed, the backrest, armrest and wheels must be mounted on the frame. It is easy to do with the four supplied screws and allen key. Item number followed by "-B" is a Boxed chair.

M2 El-Tip with joystick is only available with "-B" article number. See assembled option in technical data.

M2 200 kg Wide El-Tip and M2 300 kg Wide El-Tip is not available boxed.

On a pallet there's room for more boxed chairs than assembled. That way you can save money on freight.

In the box there is room for accessories.



M2 GAS-TIP & M2 EL-TIP

TECHNICAL DATA

	M2 GAS-TIP	M2 EL-TIP
SEAT HEIGHTS	APP. 55,5–57,5–59,5–61,5 CM	
SEAT WIDTH	46,5 CM	
SEAT DEPTH	44 CM	
MAX. HEIGHT	100–102–104–106 CM	
MAX. WIDTH	57 CM	59 CM
SPACE BETWEEN THE ARMREST	46 CM	
CLEARANCE UNDER THE SEAT	46,5–48,5–50,5–52,5	
LENGTH (WITHOUT THE FOOTRESTS)	74,5 CM	77 CM
WEIGHT	21 KG	25,8 KG
MAX. USER LOAD	140 KG	
SEAT ANGLE IN DEGREES	FROM 7° FORWARD TO 37° BACKWARDS	
WHEELS	125 MM WHEELS W/GREY RUBBER AND BALL BEARINGS. DOUBLE- ACTING BRAKES ON 3 WHEELS. 1 DIRECTIONAL FIXED WHEEL	
HEIGHT ADJUSTABLE	TELESCOPIC LEGS IN STAINLESS STEEL WITH 4 SETTINGS WITH APPROX. IN THE RANGE OF 2 CM. THE HEIGHT IS ADJUSTED BY MEANS OF CLIPS	
BACKREST	24 X 43,5 CM. DEPTH ADJUSTMENT UP TO 10 CM. NETWEAVE ADJUSTABLE WITH 2 BUCKLES FOR DEPTH ADJUSTMENT	
FOAM PARTS	SEAT: 4,5 CM ARMREST: 2,5 CM	
SURFACE/ METAL	STAINLESS STEEL, POWDER COATED	
EL-MOTOR / BATTERY SYSTEM	BATTERIES CAN USUALLY DRIVE THE CHAIR 30-40 TIMES BACK AND FORTH. STEPLESS BLOCKED ACTUATOR. EL-TIGHTNESS= IP66 (DUSTING AND PROTECTED AGAINST WATER BEAMS)	
DESCRIPTION	ART. NO.	
M2 GAS-TIP, STANDARD SEAT	310201 / 310201-B	
M2 GAS-TIP, HORSESHOE SEAT	310202 / 310202-B	
M2 EL-TIP, STANDARD SEAT	310210 / 310210-B	
M2 EL-TIP, HORSESHOE SEAT	310211 / 310211-B	
ISO-NUMBER	09 12 03	

[BACK TO](#)
[PAGE 5-6](#)

M2

GAS-TIP & M2 EL-TIP WITH HIGH NETWEAVE BACK

TECHNICAL DATA

	M2 GAS-TIP WITH HIGH NETWEAVE BACK	M2 EL-TIP WITH HIGH NETWEAVE BACK
SEAT HEIGHTS	APP. 55,5–57,5–59,5–61,5 CM	
SEAT WIDTH	46,5 CM	
SEAT DEPTH	44 CM	
MAX. HEIGHT	100–102–104–106 CM	
MAX. WIDTH	57 CM	59 CM
SPACE BETWEEN THE ARMREST	46 CM	
CLEARANCE UNDER THE SEAT	46,5–48,5–50,5–52,5 CM	
LENGTH (WITHOUT THE FOOTRESTS)	74,5 CM	77 CM
WEIGHT	21 KG	25,8 KG
MAX. USER LOAD	140 KG	
SEAT ANGLE IN DEGREES	FROM 7° FORWARD TO 37° BACKWARDS	
WHEELS	125 MM WHEELS W/GREY RUBBER AND BALL BEARINGS. DOUBLE - ACTING BRAKES ON 3 WHEELS. 1 DIRECTIONAL FIXED WHEEL	
HEIGHT ADJUSTABLE	TELESCOPIC LEGS IN STAINLESS STEEL WITH 4 SETTINGS WITH APPROX. IN THE RANGE OF 2 CM. THE HEIGHT IS ADJUSTED BY MEANS OF CLIPS	
BACKREST	39X46 CM, DEPTH ADJUSTMENT UP TO 10 CM NETWEAVE ADJUSTABLE WITH 4 BUCKLES FOR DEPTH ADJUSTMENT. WASHABLE UP TO 80 DEGREES. DO NOT TUMBLE DRY	
FOAM PARTS	SEAT: 4,5 CM ARMREST: 2,5 CM	
SURFACE/ METAL	STAINLESS STEEL, POWDER COATED	
EL-MOTOR / BATTERY SYSTEM	BATTERIES CAN USUALLY DRIVE THE CHAIR 30-40 TIMES BACK AND FORTH. STEPLESS BLOCKED ACTUATOR. EL-TIGHTNESS= IP66 (DUSTING AND PROTECTED AGAINST WATER BEAMS)	
DESCRIPTION	ART. NO.	
M2 GAS-TIP WITH HIGH NETWEAVE BACK, STANDARD SEAT	310621 / 310621-B	
M2 GAS-TIP WITH HIGH NETWEAVE BACK, HORSESHOE SEAT	310622 / 310622-B	
M2 EL-TIP WITH HIGH NETWEAVE BACK, STANDARD SEAT	310608 / 310608-B	
M2 EL-TIP WITH HIGH NETWEAVE BACK, HORSESHOE SEAT	310609 / 310609-B	
ISO-NUMBER	09 12 03	

[BACK TO](#)
[PAGE 7-8](#)

M2 200 & 300 KG WIDE EL-TIP

TECHNICAL DATA

	M2 200 KG WIDE EL-TIP	M2 300 KG WIDE EL-TIP
SEAT HIGHTS	58,5 CM	61 CM (No lid available)
SEAT WIDTH	56 CM	75 CM
SEAT DEPTH	44 CM	46 CM
MAX. HEIGHT	105 CM	104 CM
MAX. WIDTH	65 CM	83 CM
SPACE BETWEEN THE ARMREST	56 CM	72 CM
CLEARANCE UNDER THE SEAT	53 CM	54 CM
LENGHT (WITHOUT THE FOOTRESTS)	74 CM	83 CM
WEIGHT	29 KG	32 KG
MAX. USER LOAD	200 KG	300 KG
SEAT ANGLE IN DEGREES	5° FORWARD TO 30° BACKWARDS	8° FORWARD TO 28° BACKWARDS
WHEELS	150 MM WHEELS W/GREY RUBBER AND BALL BEARINGS. DOUBLE- ACTING BRAKES ON 3 WHEELS. 1 DIRECTIONAL FIXED WHEEL	
HEIGHT ADJUSTABLE	NO	
BACKREST	30 X 53,5 CM DEPTH ADJUSTMENT UP TO 10 CM. NETWEAVE ADJUSTABLE WIH 4 BUCKLES FOR DEPTH ADJUSTMENT	30 X 70 CM
PU FOAM	SEAT : 4,5 CM, LID : 2,5 CM, ARMRESTS: 2,5 CM	SEAT: 5,5 CM , ARMRESTS: 2,5 CM
SURFACE/ METAL	STAINLESS STEEL, POWDER COATED	
EL-MOTOR / BATTERY SYSTEM	BATTERIES CAN USUALLY DRIVE THE CHAIR 30-40 TIMES BACK AND FORTH.	BATTERIES CAN USUALLY DRIVE THE CHAIR 50+ TIMES BACK AND FORTH.
	STEPLESS BLOCKED ACTUATOR. EL-TIGHTNESS= IP66 (DUSTING AND PROTECTED AGAINST WATER BEAMS)	
DESCRIPTION		ART. NO.
M2 200 KG WIDE EL-TIP, HORSESHOE SEAT		310212
M2 300 KG WIDE EL- TIP, HORSESHOE SEAT		310218
ISO-NUMBER	09 12 03	

[BACK TO](#)
[PAGE 9-10](#)

M2

EL-TIP WITH JOYSTICK

TECHNICAL DATA

M2 EL-TIP MED JOYSTICK	
SEAT HEIGHTS	56,5 CM
SEAT WIDTH	46,5 CM
SEAT DEPTH	44 CM
MAX. HEIGHT	101 CM
MAX. WIDTH	71,5 CM
SPACE BETWEEN THE ARMREST	46 CM
CLEARANCE UNDER THE SEAT	53 CM
LENGTH (WITHOUT THE FOOTRESTS)	71 CM
WEIGHT	41,2 KG
MAX. USER LOAD	140 KG
SEAT ANGLE IN DEGREES	7° FORWARD TO 37° BACKWARDS
WHEELS	FRONT: 125 MM WHEELS W/GREY RUBBER AND BALL EARINGS REAR: 200 MM FIRM WHEEL CONNECTED MOTOR
HEIGHT ADJUSTABLE	NO
BACKREST	24 X 43,5 CM, DEPTH ADJUSTMENT UP TO 10 CM THE NET FABRIC WITH SEWN WEBBING AND 2 BUCKLES FOR DEPTH ADJUSTMENT
PU FOAM	SEAT : 4,5 CM,
SURFACE/ METAL	STAINLESS STEEL, POWDER COATED
EL-MOTOR / BATTERY SYSTEM	ACTUATORS, CONTROL BOX, BATTERY AND JOYSTIC. JOYSTIC WITH BATTERY INDICATOR. EL-TIGHTNESS= IP66 (DUSTING AND PROTECTED AGAINST WATER BEAMS)
DESCRIPTION	ART. NO.
STANDARD SEAT	310204-B
HORSESHOE SEAT	310205-B
CAN BE DELIVERED ASSEMBLED FOR EXTRA SERVICE CHARGE.	310363
ISO-NUMBER	09 12 03

[BACK TO](#)
[PAGE 11](#)

HMN

SINCE 1934

V 1.0

