

# PRODUCT CATALOGUE

---



***"THIS IS JUST THE START"***

***WHAT'S YOUR  
#UNSTOPPABLEAMBITION***



▶ ▶ ▶▶ ▶

# PRODUCTS

## **DAILY WHEELCHAIRS**

Carbon Fibre  
Titanium G9  
Titanium G9  
Titanium G9  
Titanium G2  
Titanium G2  
Titanium G2  
Aluminium  
Aluminium  
Aluminium  
Aluminium  
Aluminium

VEYPR SUB4  
OCTANE  
OCTANE FX  
OCTANE SUB4  
HILITE  
HILITE XTR  
MAXLITE  
TIGA  
TIGA F2  
TIGA FX  
TIGA SUB4  
TIGA JNR

## **SPORT WHEELCHAIRS**

Basketball  
Basketball  
Basketball  
Tennis  
Tennis  
Tennis  
Rugby  
Multi Sport  
Multi Sport  
Multi Sport  
Multi Sport  
Racing  
Racing  
Racing

ELITE  
ELITE X  
ELITE CX  
GRANDSLAM  
GRANDSLAM X  
GRANDSLAM CX  
PREDATOR  
CLUB SPORT  
ALLSTAR  
ALLSTAR G2  
ALLSTAR A2  
SHARK RS  
SHARK RT  
SPRINT



**WE BELIEVE IN...**

**PUSHING THE LIMITS, CHALLENGING  
THE CONVENTIONAL, BREAKING  
DOWN BARRIERS  
AND EMPOWERING PEOPLE.**



In 1988 the founders of RGK had a vision to positively change the way wheelchair users would live forever by creating made to measure wheelchairs that were light and reliable in order to improve independence and equality.

As a result, the opportunities to be empowered today have never been higher, whether it's a Paralympic legend, TV super star or what you dreamed of growing up.

We are so proud and dedicated to continue this vision, by offering our customers new and exciting products with exceptional service and support. We look forward to supporting your journey whatever it may be.



**WE ARE MADE TO MEASURE**

Respecting your individuality is our passion.

**WE ARE EXPERTS**

Sharing our knowledge is our pastime.

**WE ARE PERFECTIONISTS**

Achieving the highest quality is our aim.

**WE ARE AT YOUR SERVICE**

Creating your perfect wheelchair is why we exist.

**WE ARE MARKET LEADERS**

Pushing the boundaries in design is standard.

**WE ARE PERSONAL**

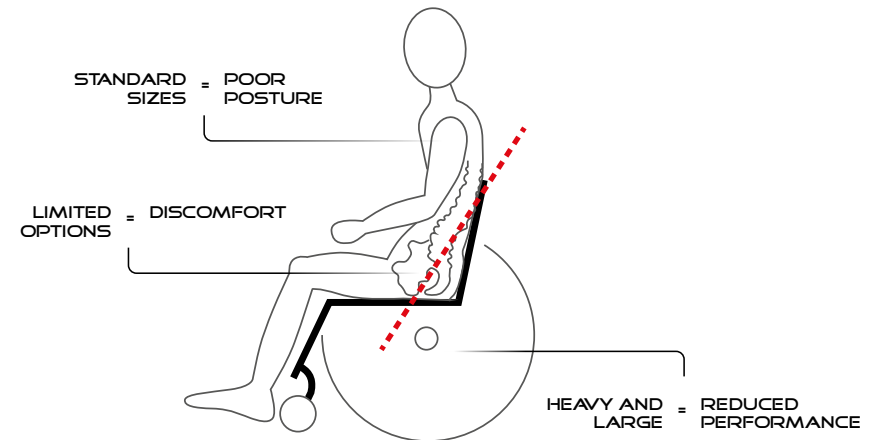
Supporting your journey is guaranteed.



**WE ARE RIGK**

▶ ▶ ▶ ▶ ▶

# THE PROBLEM: POOR FITTING WHEELCHAIRS



## THE ISSUES:

### STANDARD SIZES

Configurable wheelchair sizes can be limiting as they do not fit everyone individually. Many riders are in a wheelchair that does not fit them correctly.

### LIMITED OPTIONS

Some wheelchairs can be basic in design and have limited options. This can restrict the ability to become more active and may not meet the user's individual requirements.

### HEAVY AND LARGE

Not all wheelchairs are optimised to provide the most light and efficient solution. They can be large in size, use low cost materials and have a modular design which adds weight to the chair so more energy is needed to push, manoeuvre and lift.

## THE EFFECTS

### POOR POSTURE

Poor fitting wheelchairs can force the pelvis and spine into positions which create poor posture which, if maintained over time, could cause severe health problems including: fatigue, pain, infections, tissue breakdown, respiratory problems and persistent injuries.

### DISCOMFORT

Being uncomfortable reduces confidence and increases the risk of health problems and pain which riders may experience in an ill fitting wheelchair.

### REDUCED PERFORMANCE

A heavy wheelchair can limit its performance and make it difficult to use, particularly if the biomechanics are not optimised. More energy is needed to propel and manoeuvre which increases fatigue and puts more stress and strain on the upper body.

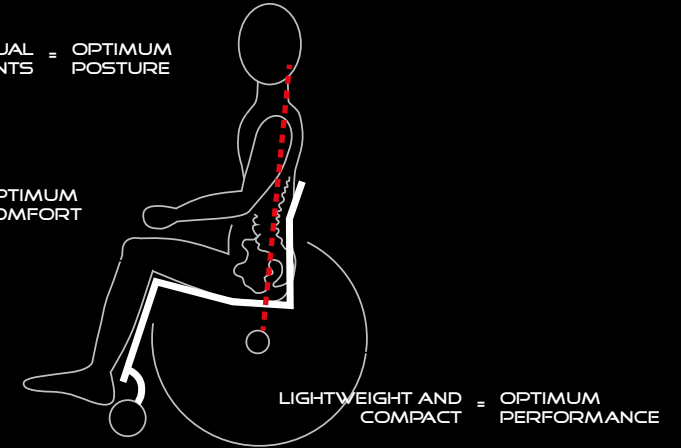
▶ ▶▶▶▶

# THE SOLUTION: MADE TO MEASURE WHEELCHAIRS



INDIVIDUAL MEASUREMENTS = OPTIMUM POSTURE

ERGONOMIC OPTIONS = OPTIMUM COMFORT



LIGHTWEIGHT AND COMPACT = OPTIMUM PERFORMANCE

## WHAT IS MADE TO MEASURE

### INDIVIDUAL MEASUREMENTS

Over 30 individual measurements are taken of the rider in the wheelchair, so that it fits their individual requirements.

### ERGONOMIC OPTIONS

A wide range of ergonomic options are available to provide optimum comfort, balance and posture.

### LIGHTWEIGHT AND COMPACT

The lightest possible solution is achieved using individual measurements, the highest quality materials and a rigid frame design.

## BENEFITS OF MADE TO MEASURE

### OPTIMUM POSTURE

Sitting in the correct position can significantly reduce the risks of developing pressure related issues in the short and long term. Good health helps promote a more active lifestyle which in turn can positively impact a rider's wellbeing.

### OPTIMUM COMFORT

Feeling comfortable increases confidence which helps the rider to achieve an active lifestyle. The likelihood of developing prolonged discomfort, pain and persistent injuries are significantly reduced.

### MAXIMISED PERFORMANCE

The rider and wheelchair work in complete unison. This reduces the amount of energy needed to propel and, in turn, increases the wheelchair's efficiency to maximize the rider's abilities.



MADE TO MEASURE





**RGK**

# DAILY WHEELCHAIRS SUMMARY

## CARBON

### VEYPR SUB4



|                     |                                |
|---------------------|--------------------------------|
| USP                 | ULTRA LIGHTWEIGHT CARBON FIBRE |
| RIDER LEVEL         | EXPERIENCED                    |
| FRAME BUILD         | MADE TO MEASURE                |
| FRAME MATERIAL      | CARBON FIBER                   |
| LIGHTWEIGHT         | 1 2 3 4 5                      |
| STIFFNESS           | 1 2 3 4 ○                      |
| OPTIONS             | 1 2 ○ ○ ○                      |
| SEAT RAIL TUBE SIZE | OVAL 29 mm - 36 mm             |
| TOTAL WEIGHT        | 5,8 KG                         |
| TRANSPORT WEIGHT    | 3,2 KG                         |
| MAX USER WEIGHT     | 110 KG                         |

### OCTANE



|                     |                      |
|---------------------|----------------------|
| USP                 | ALL ROUNDER TITANIUM |
| RIDER LEVEL         | NEW TO EXPERIENCED   |
| FRAME BUILD         | MADE TO MEASURE      |
| FRAME MATERIAL      | TITANIUM - GRADE 9   |
| LIGHTWEIGHT         | 1 2 3 4 ○            |
| STIFFNESS           | 1 2 3 ○ ○            |
| OPTIONS             | 1 2 3 4 ○            |
| SEAT RAIL TUBE SIZE | 31.75 mm             |
| TOTAL WEIGHT        | 7,3 KG               |
| TRANSPORT WEIGHT    | 4,8 KG               |
| MAX USER WEIGHT     | 110 KG               |

### OCTANEFX



|                     |                        |
|---------------------|------------------------|
| USP                 | FRONT FOLDING TITANIUM |
| RIDER LEVEL         | EXPERIENCED            |
| FRAME BUILD         | MADE TO MEASURE        |
| FRAME MATERIAL      | TITANIUM - GRADE 9     |
| LIGHTWEIGHT         | 1 2 3 ○ ○              |
| STIFFNESS           | 1 2 3 ○ ○              |
| OPTIONS             | 1 2 3 4 ○              |
| SEAT RAIL TUBE SIZE | 31.75 mm               |
| TOTAL WEIGHT        | 8 KG                   |
| TRANSPORT WEIGHT    | 5,5 KG                 |
| MAX USER WEIGHT     | 110 KG                 |

## TITANIUM

### OCTANE **SUB 4**



ULTRA LIGHTWEIGHT TITANIUM

EXPERIENCED

MADE TO MEASURE

TITANIUM - GRADE 9

1 2 3 4 5

1 2 3 ○ ○

1 2 3 ○ ○

31.75- mm

6 KG

3,5 KG

110 KG

### HILITE



ALL ROUNDER TITANIUM

NEW TO EXPERIENCED

MADE TO MEASURE

TITANIUM - GRADE 2

1 2 3 4 ○

1 2 3 ○ ○

1 2 3 4 5

25 mm

7,5 KG

5 KG

125 KG

### HILITE XTR



ALL ROUNDER TITANIUM

NEW TO EXPERIENCED

MADE TO MEASURE

TITANIUM - GRADE 2

1 2 3 4 ○

1 2 3 ○ ○

1 2 3 4 5

25 mm

7,5 KG

5 KG

115 KG

### MAXLITE



19MM SEATRAIL TUBE

NEW TO EXPERIENCED

MADE TO MEASURE

TITANIUM - GRADE 2

1 2 3 4 ○

1 2 3 4 ○

1 2 3 4 5

19 mm

7,2 KG

4,7 KG

100 KG

# DAILY WHEELCHAIRS SUM

## TIGA



ALL ROUNDER ALUMINIUM

NEW TO EXPERIENCED

MADE TO MEASURE

7020 ALUMINIUM

1 2 3 4 ○

1 2 3 4 ○

1 2 3 4 5

30 mm

7,5 KG

5 KG

125 KG

## TIGAF2



ALL ROUNDER ALUMINIUM

NEW TO EXPERIENCED

MADE TO MEASURE

7020 ALUMINIUM

1 2 3 ○ ○

1 2 3 4 ○

1 2 3 4 5

30 mm

8 KG

5,5 KG

115 KG

USP  
RIDER LEVEL  
FRAME BUILD  
FRAME MATERIAL  
LIGHTWEIGHT  
STIFFNESS  
OPTIONS  
SEAT RAIL TUBE SIZE  
TOTAL WEIGHT  
TRANSPORT WEIGHT  
MAX USER WEIGHT

# MARY

## ALUMINIUM

**TIGAFX**



FRONT FOLDING ALUMINIUM

EXPERIENCED

MADE TO MEASURE

7020 ALUMINIUM

1 2 3

1 2 3 4

1 2 3 4

30 mm

9 KG

6,5 KG

110 KG

**TIGA SUB4**



ULTRA LIGHTWEIGHT ALUMINIUM

EXPERIENCED

MADE TO MEASURE

7020 ALUMINIUM

1 2 3 4 5

1 2 3 4

1 2 3

30 mm

6 KG

3,5 KG

110 KG

**TIGA jr**



PAEDIATRIC ALUMINIUM

JUNIOR

MADE TO MEASURE

7020 ALUMINIUM

1 2 3

1 2 3 4

1 2 3 4 5

25 mm & 30 mm

7,5 KG

5 KG

70 KG

▶ ▶ ▶ ▶

# CARBON FIBRE FRAME

*"My Veypr Sub4 is so much lighter than my previous chair and the ride is unbelievably smooth. The ergonomic options have improved my seating position and posture and the extensive made to measure process has ensured the frame fits me perfectly. It's made a huge difference in my day to day life, I didn't expect what I thought were such little details to make such a huge difference to my everyday."*

**David Weir**



**A  
NEW ERA  
IS HERE**

# VEYPR SUB4



## KEY FEATURES

The Veypr Sub4 is our lightest wheelchair yet, where made to measure meets carbon fibre. With new pioneering technology we have produced the worlds first truly made to measure carbon fibre wheelchair.

|                     |                                       |
|---------------------|---------------------------------------|
| USP                 | <b>ULTRA LIGHTWEIGHT CARBON FIBRE</b> |
| Rider Level         | <b>EXPERIENCED</b>                    |
| Frame Build         | <b>MADE TO MEASURE</b>                |
| Frame Material      | <b>CARBON FIBRE</b>                   |
| Lightweight         | <b>1 2 3 4 5</b>                      |
| Stiffness           | <b>1 2 3 4</b> ○                      |
| Options             | <b>1 2</b> ○ ○ ○                      |
| Seat Rail Tube Size | <b>OVAL 29 mm x 36 mm</b>             |
| Total Weight        | <b>5,8 KG</b>                         |
| Transport Weight    | <b>3,2 KG</b>                         |
| Max User Weight     | <b>110 KG</b>                         |



▶ ▶ ▶ ▶ ▶

# TITANIUM FRAME

*"I didn't think I would be able to improve my seating position until I got into my new Octane FX. It fits me perfectly, and I feel so much more confident in myself. I never thought small changes would have such a big impact day to day. It's easier to push, lighter and now I can fold it up and take it everywhere! Plus it's so pretty..."*

*I honestly feel amazing in my Octane FX."*

**Sophie Carrigill**

**PARALYMPIAN**





# OCTANE

## KEY FEATURES

The Octane combines the benefits of titanium grade 9 with the versatility of a wide range of options making this the perfect "all rounder" titanium wheelchair.

|                     |  |
|---------------------|--|
| USP                 | <b>"All Rounder Titanium"</b>                            |
| Rider Level         | <b>New to Experienced</b>                                |
| Frame Build         | <b>Made to Measure</b>                                   |
| Frame Material      | <b>Titanium Grade 9</b>                                  |
| Lightweight         | <b>1 2 3 4</b> <input type="radio"/>                     |
| Stiffness           | <b>1 2 3</b> <input type="radio"/> <input type="radio"/> |
| Options             | <b>1 2 3 4</b> <input type="radio"/>                     |
| Seat Rail Tube Size | <b>31.75=mm</b>  |
| Total Weight        | <b>7,3kg</b>   |
| Transport Weight    | <b>4,8kg</b>   |
| Max User Weight     | <b>110kg</b>   |

AIRTECH  
UPHOLSTERY

WIDE RANGE  
OF OPTIONS

LOW PROFILE  
CASTOR HOUSING

GRADE 9



# OCTANEFX



## KEY FEATURES

The Octane FX is the perfect travel companion, so you never have to worry about your wheelchair being damaged by an airline again. The rigid titanium frame folds down to fit into an airline overhead locker\* and small spaces so you can make room for more important things in your life.

|                     |   |
|---------------------|---|
| USP                 | <b>Front Folding Titanium</b>   |
| Rider Level         | <b>Experienced</b>  |
| Frame Build         | <b>Made to Measure</b>  |
| Frame Material      | <b>Titanium Grade 9</b>   |
| Lightweight         | <input checked="" type="radio"/> 1 <input checked="" type="radio"/> 2 <input checked="" type="radio"/> 3 <input type="radio"/> 4 <input type="radio"/> 5            |
| Stiffness           | <input checked="" type="radio"/> 1 <input checked="" type="radio"/> 2 <input checked="" type="radio"/> 3 <input type="radio"/> 4 <input type="radio"/> 5            |
| Options             | <input checked="" type="radio"/> 1 <input checked="" type="radio"/> 2 <input checked="" type="radio"/> 3 <input checked="" type="radio"/> 4 <input type="radio"/> 5 |
| Seat Rail Tube Size | <b>31.75mm</b>  |
| Total Weight        | <b>8kg</b>  |
| Transport Weight    | <b>5,5kg</b>  |
| Max User Weight     | <b>110kg</b>  |



\* May not fit into all overhead lockers, please check with airline prior to travel.

# OCTANE **SUB4**



## KEY FEATURES

The titanium revival is upon us with our lightest titanium wheelchair. The Octane Sub has a guaranteed transport weight of less than 4kg\* so transferring, propelling, lifting and turning are all effortless.

|                     |                                   |
|---------------------|-----------------------------------|
| USP                 | <b>Ultra Lightweight Titanium</b> |
| Rider Level         | <b>Experienced</b>                |
| Frame Build         | <b>Made to Measure</b>            |
| Frame Material      | <b>Titanium Grade 9</b>           |
| Lightweight         | <b>1 2 3 4 5</b>                  |
| Stiffness           | <b>1 2 3</b> ○ ○                  |
| Options             | <b>1 2 3</b> ○ ○                  |
| Seat Rail Tube Size | <b>31.75mm</b>                    |
| Total Weight        | <b>6kg</b>                        |
| Transport Weight    | <b>3,5kg</b>                      |
| Max User Weight     | <b>110kg</b>                      |

LOW PROFILE  
CROSS BRACES  
(SEAT BRACE / BACK  
BRACE)

SUB4  
TECHNOLOGY



LOW PROFILE  
CASTOR HOUSING

GRADE 9

\* Transport weight.

# HILITE

## KEY FEATURES

The Hilite is our longest serving wheelchair and continues to provide reliability and quality in its timeless design. This affordable product has the benefits of titanium with a wide range of options.

|                     |  |
|---------------------|--|
| USP                 | <b>"All Rounder Titanium"</b>  |
| Rider Level         | <b>New to Experienced</b>  |
| Frame Build         | <b>Made to Measure</b>   |
| Frame Material      | <b>Titanium Grade 2</b>  |
| Lightweight         | <input checked="" type="radio"/> 1 <input checked="" type="radio"/> 2 <input checked="" type="radio"/> 3 <input checked="" type="radio"/> 4 <input type="radio"/>              |
| Stiffness           | <input checked="" type="radio"/> 1 <input checked="" type="radio"/> 2 <input checked="" type="radio"/> 3 <input type="radio"/> <input type="radio"/>                           |
| Options             | <input checked="" type="radio"/> 1 <input checked="" type="radio"/> 2 <input checked="" type="radio"/> 3 <input checked="" type="radio"/> 4 <input checked="" type="radio"/> 5 |
| Seat Rail Tube Size | <b>25mm</b>  |
| Total Weight        | <b>7,5kg</b>   |
| Transport Weight    | <b>5kg</b>   |
| Max User Weight     | <b>125kg</b>   |

AIRTECH  
UPHOLSTERY

WIDE RANGE  
OF OPTIONS



CLASSIC  
CASTOR ARM  
DESIGN

GRADE 2

# HILITE XTR

## KEY FEATURES

The Hilite XTR is the perfect titanium wheelchair to experience made to measure for the first time. This affordable product has the benefits of titanium with a wide range of options including a crash test upgrade.

|                     |  |
|---------------------|--|
| USP                 | <b>"All Rounder Titanium"</b>                            |
| Rider Level         | <b>New to Experienced</b>                                |
| Frame Build         | <b>Made to Measure</b>                                   |
| Frame Material      | <b>Titanium Grade 2</b>                                  |
| Lightweight         | <b>1 2 3 4</b> <input type="radio"/>                     |
| Stiffness           | <b>1 2 3</b> <input type="radio"/> <input type="radio"/> |
| Options             | <b>1 2 3 4 5</b>   |
| Seat Rail Tube Size | <b>25mm</b>  |
| Total Weight        | <b>7,5kg</b>   |
| Transport Weight    | <b>5kg</b>   |
| Max User Weight     | <b>115kg</b>   |

AIRTECH  
UPHOLSTERY

WIDE RANGE  
OF OPTIONS

CRASH TEST  
UPGRADE

CLASSIC  
CASTOR ARM  
DESIGN

GRADE 2



# MAXLITE

## KEY FEATURES

The Maxlite offers a subtle design with a low profile seat rail tube while still benefiting from a titanium frame. Known as the wheelchair that "is barely there"; getting you noticed for all the right reasons.

|                     |                                      |
|---------------------|--------------------------------------|
| USP                 | <b>19mm Seat Rail Tube</b>           |
| Rider Level         | <b>New to Experienced</b>            |
| Frame Build         | <b>Made to Measure</b>               |
| Frame Material      | <b>Titanium Grade 2</b>              |
| Lightweight         | <b>1 2 3 4</b> <input type="radio"/> |
| Stiffness           | <b>1 2 3 4</b> <input type="radio"/> |
| Options             | <b>1 2 3 4 5</b>                     |
| Seat Rail Tube Size | <b>19mm</b>                          |
| Total Weight        | <b>7,2kg</b>                         |
| Transport Weight    | <b>4,7kg</b>                         |
| Max User Weight     | <b>100kg</b>                         |

AIRTECH  
UPHOLSTERY

WIDE RANGE  
OF OPTIONS

CLASSIC  
CASTOR ARM  
DESIGN

GRADE 2





▶ ▶ ▶ ▶ ▶  
**ALUMINIUM FRAME**

*"I love my chair. It's well made and fits me perfectly. It also transfers onto the front seat of my car really easily."*

**Ben Tansley**





# TIGA

The TIGA combines the benefits of aluminium with the versatility of a wide range of options making this the perfect "all rounder" aluminium wheelchair.

|                     |                                      |
|---------------------|--------------------------------------|
| USP                 | <b>Aluminium "All Rounder"</b>       |
| Rider Level         | <b>New to Experienced</b>            |
| Frame Build         | <b>Made to Measure</b>               |
| Frame Material      | <b>7020 Aluminium</b>                |
| Lightweight         | <b>1 2 3 4</b> <input type="radio"/> |
| Stiffness           | <b>1 2 3 4</b> <input type="radio"/> |
| Options             | <b>1 2 3 4 5</b>                     |
| Seat Rail Tube Size | <b>30mm</b>                          |
| Total Weight        | <b>7,5kg</b>                         |
| Transport Weight    | <b>5kg</b>                           |
| Max User Weight     | <b>125kg</b>                         |

## KEY FEATURES



AIRTECH  
UPHOLSTERY

WIDE RANGE  
OF OPTIONS

LOW PROFILE  
CASTOR ARM

AEROSPACE  
GRADE  
**7020**  
ALUMINIUM

# TIGA F2

## KEY FEATURES

The Tiga F2 is the perfect aluminium wheelchair to experience made to measure for the first time. This affordable product has the benefits of aluminium with a wide range of options so you can get the perfect wheelchair for you.

|                     |  |
|---------------------|--|
| USP                 | <b>Aluminium "All Rounder"</b>   |
| Rider Level         | <b>New to Experienced</b>  |
| Frame Build         | <b>Made to Measure</b>   |
| Frame Material      | <b>7020 Aluminium</b>  |
| Lightweight         | <input checked="" type="radio"/> 1 <input checked="" type="radio"/> 2 <input checked="" type="radio"/> 3 <input type="radio"/> 4 <input type="radio"/> 5                       |
| Stiffness           | <input checked="" type="radio"/> 1 <input checked="" type="radio"/> 2 <input checked="" type="radio"/> 3 <input checked="" type="radio"/> 4 <input type="radio"/> 5            |
| Options             | <input checked="" type="radio"/> 1 <input checked="" type="radio"/> 2 <input checked="" type="radio"/> 3 <input checked="" type="radio"/> 4 <input checked="" type="radio"/> 5 |
| Seat Rail Tube Size | <b>30 mm</b>   |
| Total Weight        | <b>8kg</b>   |
| Transport Weight    | <b>5,5kg</b>   |
| Max User Weight     | <b>115kg</b>   |



AIRTECH  
UPHOLSTERY

WIDE RANGE  
OF OPTIONS

LOW PROFILE  
CASTOR ARM

AEROSPACE  
GRADE  
**7020**  
ALUMINIUM

# TIGA FX



## KEY FEATURES

Travel worry free with the Tiga FX. The rigid aluminium frame folds down to fit into an airline overhead locker\* and small spaces so you can make room for more important things in your life. This lightweight folding wheelchair is the perfect travel companion, so you never have to worry about your wheelchair being damaged by an airline again.

|                     |   |
|---------------------|---|
| USP                 | <b>Front Folding Aluminium</b>  |
| Rider Level         | <b>Experienced</b>  |
| Frame Build         | <b>Made to Measure</b>  |
| Frame Material      | <b>7020 Aluminium</b>   |
| Lightweight         | <input checked="" type="radio"/> 1 <input checked="" type="radio"/> 2 <input checked="" type="radio"/> 3 <input type="radio"/> 4 <input type="radio"/> 5            |
| Stiffness           | <input checked="" type="radio"/> 1 <input checked="" type="radio"/> 2 <input checked="" type="radio"/> 3 <input checked="" type="radio"/> 4 <input type="radio"/> 5 |
| Options             | <input checked="" type="radio"/> 1 <input checked="" type="radio"/> 2 <input checked="" type="radio"/> 3 <input checked="" type="radio"/> 4 <input type="radio"/> 5 |
| Seat Rail Tube Size | <b>30 mm</b>  |
| Total Weight        | <b>9kg</b>  |
| Transport Weight    | <b>6,5kg</b>  |
| Max User Weight     | <b>110 kg</b>   |



\* May not fit into all overhead lockers, please check with airline prior to travel.

AEROSPACE  
GRADE  
**7020**  
ALUMINIUM

# TIGA SUB4



## KEY FEATURES

The Tiga Sub4 is our lightest aluminium wheelchair, with a guaranteed transport weight of less than 4kg\* so transferring, propelling, lifting and turning are all effortless.

|                     |                                    |
|---------------------|------------------------------------|
| USP                 | <b>Ultra Lightweight Aluminium</b> |
| Rider Level         | <b>Experienced</b>                 |
| Frame Build         | <b>Made to Measure</b>             |
| Frame Material      | <b>7020 Aluminium</b>              |
| Lightweight         | <b>1 2 3 4 5</b>                   |
| Stiffness           | <b>1 2 3 4</b> ○                   |
| Options             | <b>1 2 3</b> ○ ○                   |
| Seat Rail Tube Size | <b>30mm</b>                        |
| Total Weight        | <b>6kg</b>                         |
| Transport Weight    | <b>3,5kg</b>                       |
| Max User Weight     | <b>110kg</b>                       |

*SUB4  
TECHNOLOGY*

*LOW PROFILE  
CROSS BRACES  
(SEAT BRACE/  
BACK BRACE)*

*HOLLOW  
FORGED  
CASTOR ARM*



AEROSPACE  
GRADE  
**7020**  
ALUMINIUM

# TIGA *jnr*



## KEY FEATURES

The Tiga Jnr is the perfect pediatric wheelchair. Built with plenty of growth adjustment while maintaining a lightweight and rigid frame with a wide range of options which gives children the freedom to explore.

|                     |                              |
|---------------------|------------------------------|
| USP                 | <b>Paediatrics Aluminium</b> |
| Rider Level         | <b>Junior</b>                |
| Frame Build         | <b>Made to Measure</b>       |
| Frame Material      | <b>7020 Aluminium</b>        |
| Lightweight         | <b>1 2 3</b> ○ ○             |
| Stiffness           | <b>1 2 3 4</b> ○             |
| Options             | <b>1 2 3 4 5</b>             |
| Seat Rail Tube Size | <b>25mm &amp; 30mm</b>       |
| Total Weight        | <b>7,5kg</b>                 |
| Transport Weight    | <b>5kg</b>                   |
| Max User Weight     | <b>70kg</b>                  |



**INTELLIGENT GROWTH SYSTEM**

**WIDE RANGE OF OPTIONS**



# SPD



MADE TO MEASURE WITH PRECISION TO THE MILLIMETER

# SPORT



**RGK**

# SPORT WHEELCHAIRS

## BASKETBALL

### ELITE



### ELITE<sup>X</sup>



### ELITE<sup>X</sup>



|                     |                                     |                                     |                               |
|---------------------|-------------------------------------|-------------------------------------|-------------------------------|
| USP                 | LIGHTWEIGHT PERFORMANCE             | ULTRA LIGHTWEIGHT PERFORMANCE       | CARBON FIBRE SEAT PERFORMANCE |
| RIDER LEVEL         | INTERMEDIATE TO EXPERT (1-4,5 PTS.) | INTERMEDIATE TO EXPERT (1-4,5 PTS.) | EXPERT (3-4,5 PTS.)           |
| FRAME BUILD         | MADE TO MEASURE                     | MADE TO MEASURE                     | MADE TO MEASURE               |
| FRAME MATERIAL      | 7020 ALUMINIUM                      | 7020 ALUMINIUM                      | 7020 ALUMINIUM                |
| LIGHTWEIGHT         | 1 2 3 4 ○                           | 1 2 3 4 5                           | 1 2 3 4 5                     |
| STIFFNESS           | 1 2 3 4 ○                           | 1 2 3 4 5                           | 1 2 3 4 5                     |
| OPTIONS             | 1 2 3 4 ○                           | 1 2 3 4 ○                           | 1 2 3 ○ ○                     |
| SEAT RAIL TUBE SIZE | 22 mm                               | 22 mm                               | 22 mm                         |
| TOTAL WEIGHT        | 10,2 KG                             | 9,8 KG                              | 10 KG                         |
| MAX USER WEIGHT     | 125 KG                              | 125 KG                              | 125 KG                        |



PRODUCT AVAILABILITY MAY VARY FROM COUNTRY TO COUNTRY



## TENNIS

### GrandSlam



LIGHTWEIGHT PERFORMANCE

INTERMEDIATE TO EXPERT (OPEN/QUAD)

MADE TO MEASURE

7020 ALUMINIUM

1 2 3 4 ○

1 2 3 4 ○

1 2 3 4 ○

22 mm

10,2 KG

125 KG

### GrandSlamX



ULTRA LIGHTWEIGHT PERFORMANCE

INTERMEDIATE TO EXPERT (OPEN/QUAD)

MADE TO MEASURE

7020 ALUMINIUM

1 2 3 4 5

1 2 3 4 5

1 2 3 4 ○

22 mm

9,8 KG

125 KG

### GrandSlamCX



CARBON FIBRE SEAT PERFORMANCE

EXPERT (OPEN)

MADE TO MEASURE

7020 ALUMINIUM

1 2 3 4 5

1 2 3 4 5

1 2 3 ○ ○

22 mm

10 KG

125 KG

## RUGBY

### PREDATOR



DURABLE PERFORMANCE

EXPERT (3-4,5 PTS.)

MADE TO MEASURE

7020 ALUMINIUM

1 2 ○ ○ ○

1 2 3 4 5

1 2 3 4 ○

25 mm

12 KG

125 KG

# SPORT WHEELCHAIRS

## MULTI-SPORT

### CLUB SPORT



### ALLSTAR



### ALLSTAR G2



|                     |                         |                                  |                          |
|---------------------|-------------------------|----------------------------------|--------------------------|
| USP                 | ENTRY LEVEL MULTI SPORT | LIGHTWEIGHT MULTI SPORT          | LIGHTWEIGHT MULTI SPORT  |
| RIDER LEVEL         | BEGINNER                | BEGINNER TO INTERMEDIATE JUNIORS | BEGINNER TO INTERMEDIATE |
| FRAME BUILD         | CONFIGURABLE            | MADE TO MEASURE                  | MADE TO MEASURE          |
| FRAME MATERIAL      | CHROME MOLY             | 7020 ALUMINIUM                   | 7020 ALUMINIUM           |
| LIGHTWEIGHT         | 1 2 ○ ○ ○               | 1 2 3 ○ ○                        | 1 2 3 ○ ○                |
| STIFFNESS           | 1 2 3 ○ ○               | 1 2 3 ○ ○                        | 1 2 3 4 ○                |
| OPTIONS             | 1 2 ○ ○ ○               | 1 2 3 4 ○                        | 1 2 3 4 ○                |
| SEAT RAIL TUBE SIZE | 19 mm                   | 22 mm                            | 22 mm                    |
| TOTAL WEIGHT        | 12,6 KG                 | 11 KG                            | 11 KG                    |
| MAX USER WEIGHT     | 125 KG                  | 100 KG                           | 115 KG                   |

# 2023 RANGE

PRODUCT AVAILABILITY MAY VARY FROM COUNTRY TO COUNTRY



## HANDBIKE / RACING

### ALLSTAR A2



ADJUSTABLE MULTI SPORT

BEGINNER

MADE TO MEASURE & CONFIGURABLE

7020 ALUMINIUM

1 2 3

1 2 3

1 2 3

22 mm

11,5 KG

125 KG

### SHARKARS



COMPETITIVE PERFORMANCE

INTERMEDIATE TO EXPERT

CONFIGURABLE

ALUMINIUM

1 2 3 4

1 2 3 4

1 2 3

-

FROM 12,9 KG

125 KG

### SHARKART



RECREATIONAL HANDCYCLE

BEGINNER TO INTERMEDIATE

CONFIGURABLE

ALUMINIUM

1 2 3

1 2 3

1 2 3 4

-

FROM 14,9 KG

125 KG

### SPRINT



LIGHTWEIGHT PERFORMANCE

BEGINNER TO EXPERT

MADE TO MEASURE

7020 ALUMINIUM

1 2 3 4

1 2 3 4

1 2 3 4

OVAL 70 mm x 38 mm

9 KG

115 KG

▶ ▶ ▶ ▶ ▶  
**BASKETBALL**

*“Chair after chair I am still deciphering - whether it’s the chair’s weight, its stiffness, or all of the above - but undeniably, there’s something special about these wheelchairs.”*

**Patrick Anderson**

**3X PARALYMPIC GOLD MEDALIST**

*Patrick rides the Elite X.*



# ELITE



BASKETBALL

## KEY FEATURES

The world famous Elite is the ultimate basketball wheelchair, supporting national teams with high performance wheelchairs since London 2012. The lightweight Elite delivers maximum stiffness and exceptional rolling performance whilst reacting instantly with minimal effort.

|                     |   |
|---------------------|---|
| USP                 | <b>Lightweight Performance</b>  |
| Rider Level         | <b>Intermediate to expert (1-4.5)</b>   |
| Frame Build         | <b>Made to Measure</b>  |
| Frame Material      | <b>7020 Aluminium</b>   |
| Lightweight         | <input checked="" type="radio"/> 1 <input checked="" type="radio"/> 2 <input checked="" type="radio"/> 3 <input checked="" type="radio"/> 4 <input type="radio"/> |
| Stiffness           | <input checked="" type="radio"/> 1 <input checked="" type="radio"/> 2 <input checked="" type="radio"/> 3 <input checked="" type="radio"/> 4 <input type="radio"/> |
| Options             | <input checked="" type="radio"/> 1 <input checked="" type="radio"/> 2 <input checked="" type="radio"/> 3 <input checked="" type="radio"/> 4 <input type="radio"/> |
| Seat Rail Tube Size | <b>22mm</b>   |
| Total Weight        | <b>10,2kg</b>   |
| Max User Weight     | <b>125kg</b>  |



# ELITE X



## KEY FEATURES

The best just got better with the Elite X, combining the tried and tested with new technology and materials. The ultra lightweight frame and carbon fibre technology delivers unparalleled stiffness and efficiency, providing athletes with the highest performance. reacting instantly with minimal effort.

|                     |   |
|---------------------|---|
| USP                 | <b>Ultra Lightweight Performance</b>      |
| Rider Level         | <b>Intermediate to Expert (1-4.5 pts)</b> |
| Frame Build         | <b>Made to Measure</b>                    |
| Frame Material      | <b>7020 Aluminium</b>                     |
| Lightweight         | <b>1 2 3 4 5</b>                          |
| Stiffness           | <b>1 2 3 4 5</b>                          |
| Options             | <b>1 2 3 4</b> <input type="radio"/>      |
| Seat Rail Tube Size | <b>22mm or 25mm</b>                       |
| Total Weight        | <b>9,8kg</b>                              |
| Max User Weight     | <b>125kg</b>                              |



\* Available option.

# ELITE CX



## KEY FEATURES

The Elite CX is our most advanced basketball wheelchair, combining all the benefits of the Elite X with a carbon fibre seat. This combination provides the ultimate connection to the athlete, delivering unrivaled responsiveness and maneuverability.

|                     |                                      |
|---------------------|--------------------------------------|
| USP                 | <b>Carbon Fibre Seat Performance</b> |
| Rider Level         | <b>Expert (3-4,5 pts)</b>            |
| Frame Build         | <b>Made to Measure</b>               |
| Frame Material      | <b>7020 Aluminium</b>                |
| Lightweight         | <b>1 2 3 4 5</b>                     |
| Stiffness           | <b>1 2 3 4 5</b>                     |
| Options             | <b>1 2 3</b> ○ ○                     |
| Seat Rail Tube Size | <b>22mm</b>                          |
| Total Weight        | <b>10kg</b>                          |
| Max User Weight     | <b>125kg</b>                         |



AEROSPACE  
GRADE  
**7020**  
ALUMINIUM

▶ ▶ ▶ ▶ ▶  
**TENNIS**

*“Wheelchair tennis is my passion and as I continue to push my limits and strive for greatness, I’m certain of one thing: I wouldn’t trade my RGK Wheelchair for anything else, and I wouldn’t play in any other wheelchair.”*

**Alfie Hewett**

**23-MAJOR CHAMPION**  
(AND COUNTING)

*Alfie rides the GrandSlam CX.*





# GrandSlam



TENNIS

## KEY FEATURES

The GrandSlam is the ultimate tennis wheelchair, supporting Paralympic athletes with high performance wheelchairs. The lightweight GrandSlam delivers maximum stiffness and exceptional rolling performance whilst reacting instantly with minimal effort.

|                     |   |
|---------------------|---|
| USP                 | <b>Lightweight Performance</b>  |
| Rider Level         | <b>Intermediate to Expert (Open/Quad)</b>   |
| Frame Build         | <b>Made to Measure</b>  |
| Frame Material      | <b>7020 Aluminium</b>   |
| Lightweight         | <input checked="" type="radio"/> 1 <input checked="" type="radio"/> 2 <input checked="" type="radio"/> 3 <input checked="" type="radio"/> 4 <input type="radio"/> |
| Stiffness           | <input checked="" type="radio"/> 1 <input checked="" type="radio"/> 2 <input checked="" type="radio"/> 3 <input checked="" type="radio"/> 4 <input type="radio"/> |
| Options             | <input checked="" type="radio"/> 1 <input checked="" type="radio"/> 2 <input checked="" type="radio"/> 3 <input checked="" type="radio"/> 4 <input type="radio"/> |
| Seat Rail Tube Size | <b>22mm</b>   |
| Total Weight        | <b>10,2kg</b>   |
| Max User Weight     | <b>125kg</b>  |



AEROSPACE  
GRADE  
**7020**  
ALUMINIUM

# GrandSlamX



TENNIS

## KEY FEATURES

The next generation in wheelchair tennis, the GrandSlam X combines the tried and tested with new technology and materials. The ultra lightweight frame and carbon fibre technology delivers unparalleled stiffness and efficiency, providing athletes with the highest performance.

|                    |   |
|--------------------|---|
| USP                | <b>Ultra Light Weight Performance</b>     |
| Rider Level        | <b>Intermediate to Expert (Open/Quad)</b> |
| Frame Build        | <b>Made to Measure</b>                    |
| Frame Material     | <b>7020 Aluminium</b>                     |
| Lightweight        | <b>1 2 3 4 5</b>                          |
| Stiffness          | <b>1 2 3 4 5</b>                          |
| Options            | <b>1 2 3 4</b> <input type="radio"/>      |
| Sea Rail Tube Size | <b>22mm</b>                               |
| Total Weight       | <b>9,8kg</b>                              |
| Max User Weight    | <b>125kg</b>                              |



AEROSPACE  
GRADE  
**7020**  
ALUMINIUM

\* Available option.

# GrandSlamX



TENNIS

## KEY FEATURES

The Elite CX is our most advanced basketball wheelchair, combining all the benefits of the Elite X with a carbon fibre seat. This combination provides the ultimate connection to the athlete, delivering unrivaled responsiveness and maneuverability.

USP

**Carbon Fibre Seat Performance**

Rider Level

**Expert (Open)**

Frame Build

**Made to Measure**

Frame Material

**7020 Aluminium**

Lightweight

**1 2 3 4 5**

Stiffness

**1 2 3 4 5**

Options

**1 2 3** ○ ○

Seat Rail Tube Size

**22mm**

Total Weight

**10kg**

Max User Weight

**125kg**



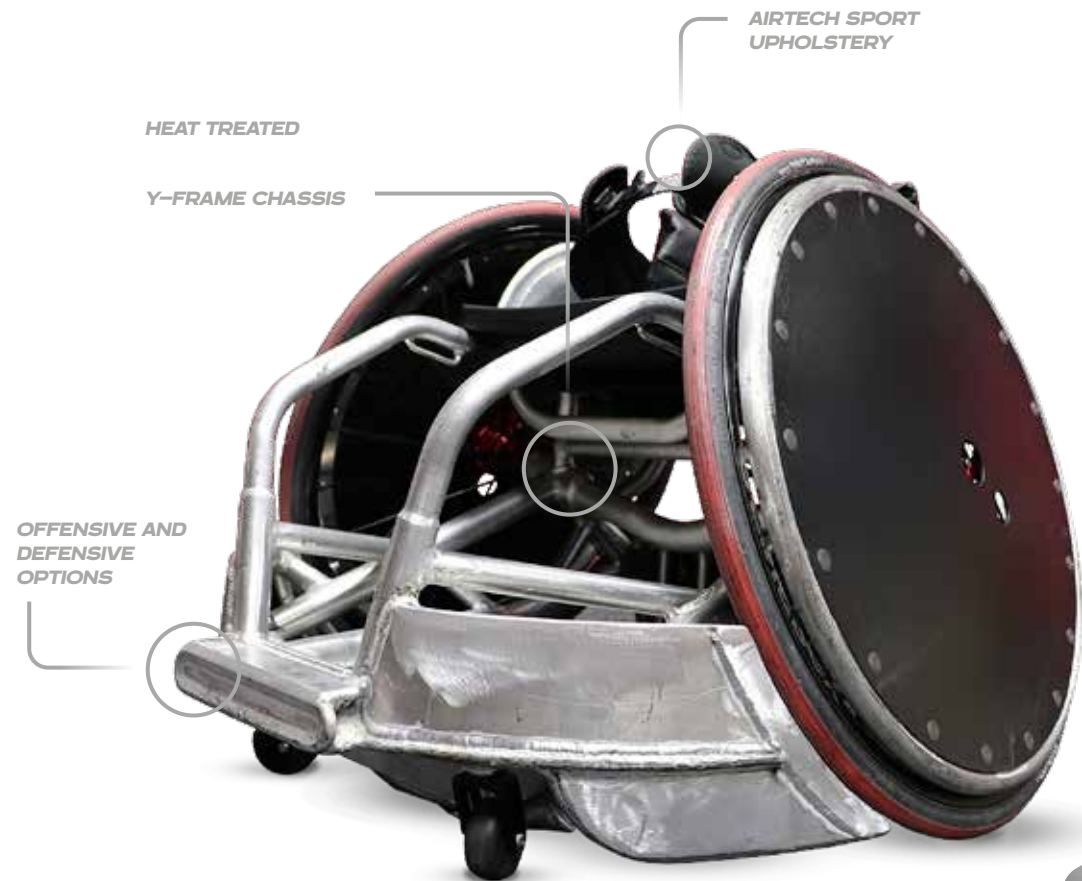
# PREDATOR



## KEY FEATURES

The Predator is a high performance quad rugby wheelchair which is responsive, lightweight but incredibly durable. The low centre of gravity improves stability during contact so players can stay in more control.

|                     |  |
|---------------------|--|
| USP                 | <b>Durable Performance</b>   |
| Rider Level         | <b>Intermediate to Expert</b>  |
| Frame Build         | <b>Made to Measure</b>   |
| Frame Material      | <b>7020 Aluminium</b>  |
| Lightweight         | <input checked="" type="radio"/> 1 <input checked="" type="radio"/> 2 <input type="radio"/> 3 <input type="radio"/> 4 <input type="radio"/> 5                                  |
| Stiffness           | <input checked="" type="radio"/> 1 <input checked="" type="radio"/> 2 <input checked="" type="radio"/> 3 <input checked="" type="radio"/> 4 <input checked="" type="radio"/> 5 |
| Options             | <input checked="" type="radio"/> 1 <input checked="" type="radio"/> 2 <input checked="" type="radio"/> 3 <input checked="" type="radio"/> 4 <input type="radio"/> 5            |
| Seat Rail Tube Size | <b>25mm</b>  |
| Total Weight        | <b>12kg</b>  |
| Max User Weight     | <b>125kg</b>   |



AEROSPACE  
GRADE  
**7020**  
ALUMINIUM

# CLUB SPORT



MULTI-SPORT

## KEY FEATURES

The Club Sport is the ideal sports wheelchair for clubs, schools and organisations looking to provide reliable and cost effective equipment for their participants. The rigid steel frame provides longevity and reliability so program leaders can focus on developing "grassroots" in wheelchair sports.

|                     |  |
|---------------------|--|
| USP                 | <b>Entry Level Multisport</b>  |
| Rider Level         | <b>Beginner</b>  |
| Frame Build         | <b>Configurable</b>  |
| Frame Material      | <b>Chrome Moly</b>   |
| Lightweight         | <input checked="" type="radio"/> 1 <input checked="" type="radio"/> 2 <input type="radio"/> 3 <input type="radio"/> 4 <input type="radio"/> 5            |
| Stiffness           | <input checked="" type="radio"/> 1 <input checked="" type="radio"/> 2 <input checked="" type="radio"/> 3 <input type="radio"/> 4 <input type="radio"/> 5 |
| Options             | <input checked="" type="radio"/> 1 <input checked="" type="radio"/> 2 <input type="radio"/> 3 <input type="radio"/> 4 <input type="radio"/> 5            |
| Seat Rail Tube Size | <b>19mm</b>  |
| Total Weight        | <b>12,6kg</b>  |
| Max User Weight     | <b>125kg</b>   |

MULTI SPORT  
OPTIONS



ADJUSTABLE  
BACKREST

ADJUSTABLE  
CENTRE OF  
GRAVITY

ADJUSTABLE  
FOOTREST

CHROME  
MOLY  
FRAME

# ALLSTAR



MULTI-SPORT

## KEY FEATURES

The Allstar is the perfect club sports wheelchair for junior players looking to experience made to measure for the first time. This versatile product covers many different sports and comes with adjustment options as standard so players can fine tune their setup as they develop.

|                     |   |
|---------------------|---|
| USP                 | <b>Lightweight Multi Sport</b>  |
| Rider Level         | <b>Beginner to Intermediate</b>   |
| Frame Build         | <b>Made to Measure</b>  |
| Frame Material      | <b>7020 Aluminium</b>   |
| Lightweight         | <input checked="" type="radio"/> 1 <input checked="" type="radio"/> 2 <input checked="" type="radio"/> 3 <input type="radio"/> 4 <input type="radio"/> 5            |
| Stiffness           | <input checked="" type="radio"/> 1 <input checked="" type="radio"/> 2 <input checked="" type="radio"/> 3 <input type="radio"/> 4 <input type="radio"/> 5            |
| Options             | <input checked="" type="radio"/> 1 <input checked="" type="radio"/> 2 <input checked="" type="radio"/> 3 <input checked="" type="radio"/> 4 <input type="radio"/> 5 |
| Seat Rail Tube Size | <b>22mm</b>   |
| Total Weight        | <b>11kg</b>   |
| Max User Weight     | <b>100kg</b>  |



# ALLSTAR G2



MULTI-SPORT

## KEY FEATURES

The Allstar G2 is the perfect club sports wheelchair for adult players looking to experience made to measure for the first time. This versatile product covers many different sports and comes with adjustment options as standard so players can fine tune their setup as they develop.

|                     |   |
|---------------------|---|
| USP                 | <b>Lightweight Multi Sport</b>  |
| Rider Level         | <b>Beginner to Intermediate</b>   |
| Frame Build         | <b>Made to Measure</b>  |
| Frame Material      | <b>7020 Aluminium</b>   |
| Lightweight         | <input checked="" type="radio"/> 1 <input checked="" type="radio"/> 2 <input checked="" type="radio"/> 3 <input type="radio"/> 4 <input type="radio"/> 5            |
| Stiffness           | <input checked="" type="radio"/> 1 <input checked="" type="radio"/> 2 <input checked="" type="radio"/> 3 <input type="radio"/> 4 <input type="radio"/> 5            |
| Options             | <input checked="" type="radio"/> 1 <input checked="" type="radio"/> 2 <input checked="" type="radio"/> 3 <input checked="" type="radio"/> 4 <input type="radio"/> 5 |
| Seat Rail Tube Size | <b>22mm</b>   |
| Total Weight        | <b>11kg</b>   |
| Max User Weight     | <b>115kg</b>  |



AEROSPACE  
GRADE  
**7020**  
ALUMINIUM

# ALLSTAR A2



MULTI-SPORT

## KEY FEATURES

The Allstar A2 is the ultimate multi-sport wheelchair and is revolutionising club sports. With extensive adjustability options, this is the perfect wheelchair for clubs or up and coming players just starting out in wheelchair sports. With an adjustable seat height that utilises an ergonomic seat design, it can cater to a diverse range of individuals, making it the ultimate choice for everyone.

|                     |  |
|---------------------|--|
| USP                 | <b>Adjustable Multi Sport</b>  |
| Rider Level         | <b>Beginner</b>  |
| Frame Build         | <b>Made to Measure &amp; Configurable</b>  |
| Frame Material      | <b>7020 Aluminium</b>  |
| Lightweight         | <input checked="" type="radio"/> 1 <input checked="" type="radio"/> 2 <input checked="" type="radio"/> 3 <input type="radio"/> <input type="radio"/> |
| Stiffness           | <input checked="" type="radio"/> 1 <input checked="" type="radio"/> 2 <input checked="" type="radio"/> 3 <input type="radio"/> <input type="radio"/> |
| Options             | <input checked="" type="radio"/> 1 <input checked="" type="radio"/> 2 <input checked="" type="radio"/> 3 <input type="radio"/> <input type="radio"/> |
| Seat Rail Tube Size | <b>25mm</b>  |
| Total Weight        | <b>11,5kg</b>  |
| Max User Weight     | <b>120kg</b>   |





# SHARK RS



HANDBIKE

## KEY FEATURES

The choice of champions. The Shark RS is a competition handbike designed to allow for the best individual positioning. Enclosing the driver, when force is introduced, it's converted directly into propulsion.

USP

**Competitive Performance**

Rider Level

**Intermediate to expert**

Frame Build

**Configurable**

Frame Material

**Aluminium**

Lightweight



Stiffness



Options



Weight

**From 12,9kg**

Frame Width

**34 - 42 cm in 2 cm increments**

Rear

**Angle Adjustable 20° to 60°**

Crank Length

**155-175 mm in 5 mm increments**

Gear

**3x11**

Brake

**PERFORMANCE**

LIGHTWEIGHT REAR AXLE FIXATION  
WITH FORGED PARTS

INNOVATIVE PERFORMANCE  
BACKREST

LIGHTWEIGHT RIGID  
FRONT FORK



LOW COG & WIDE WHEELBASE



# SHARK RT



HANDBIKE

## KEY FEATURES

For leisure and semi-professional athletes. Delivering the same outstanding performance as the Shark RS, the Shark RT offers more adjustability and flexibility, which means you can achieve your optimum position to rule the road.

USP

**Recreational handcycle**

Rider Level

**Beginner to Intermediate**

Frame Build

**Configurable**

Frame Material

**Aluminium**

Lightweight



Stiffness



Options



Weight

**From 14,9 kg**

Frame Width

**38/40/42 cm**

Rear

**Angle Adjustable 20° to 60°**

Crank Lenth

**175 mm**

Gear

**3x10**

Brake

**STANDARD**

*INNOVATIVE BACKREST  
ALLOWS ERGONOMIC  
ADJUSTABILITY*

*LIGHTWEIGHT  
PARKING BRAKE*

*ADJUSTABLE FORK  
& FOOTRESTS*



AEROSPACE  
GRADE  
**7020**  
ALUMINIUM

▶ ▶ ▶ ▶ ▶  
**RACING**

*"My new RGK Sprint looks and feels great. It has been exciting to create a made to measure frame and work on finding a more efficient position for me! My frame feels really stiff and secure, so I feel much more powerful when I race."*

**Melanie Woods**  
**PARALYMPIAN**



# SPRINT



RACING

## KEY FEATURES

The Sprint is the ultimate lightweight racing wheelchair suitable for beginners right through to experts looking for high performance. Boasting many different options, athletes can choose their optimal set up depending on their ability and rider level.

|                   |                                      |
|-------------------|--------------------------------------|
| USP               | <b>Lightweight Performance</b>       |
| Rider Level       | <b>Beginner to Expert</b>            |
| Frame Build       | <b>Made to Measure</b>               |
| Frame Material    | <b>7020 Aluminium</b>                |
| Lightweight       | <b>1 2 3 4</b> <input type="radio"/> |
| Stiffness         | <b>1 2 3 4</b> <input type="radio"/> |
| Options           | <b>1 2 3 4</b> <input type="radio"/> |
| Central Tube Size | <b>Oval 70mm x 38mm</b>              |
| Total Weight      | <b>9kg</b>                           |
| Max User Weight   | <b>115kg</b>                         |



# ▶ ▶ ▶ ▶ ▶ **USE OF MATERIALS**

Our entire range is made using only the best materials. Our range is comprised of carbon fibre, titanium and aluminium.



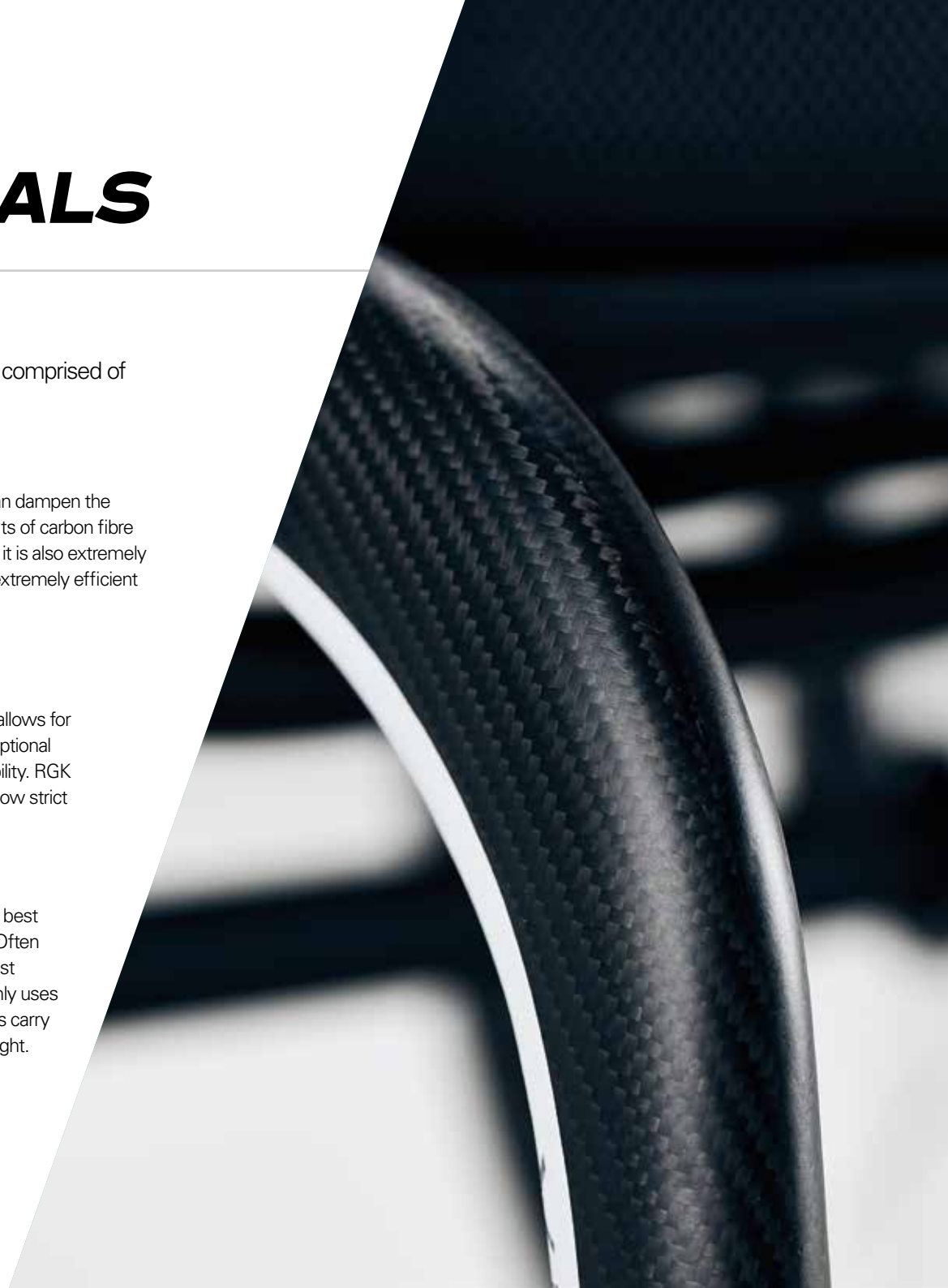
**CARBON FIBRE** has vibration absorbing qualities which can dampen the impact of rolling on uneven surfaces. One of the key benefits of carbon fibre is its strength to weight ratio. So while it is ultra-lightweight it is also extremely strong which means the energy transfer when pushing is extremely efficient to provide a smooth yet rigid ride.



**TITANIUM** has natural vibration absorbing qualities which allows for a smooth and comfortable ride. It is also known for its exceptional strength to weight ratio, anti corrosion properties and durability. RGK purchase only the finest grades of Titanium 2 and 9 and follow strict procedures in order to use it in our manufacture process.



**ALUMINIUM** offers a more direct and efficient ride, and is best used when performance is more important than comfort. Often recognised by its versatility, aluminium is also one of the best materials used for making high quality wheelchairs. RGK only uses A7020, the finest grade of aluminium, and on some models carry out a special heat treatment process in order to reduce weight.



# ▶ ▶ ▶ ▶ ▶ **GLOSSARY**

- **SUB4TECHNOLOGY.** By making 72 minute but fundamental changes and alterations that many would simply neglect to notice, we have produced ultra-lightweight technology to ensure every Sub4 wheelchair has a guaranteed transport weight of less than 4GK. The key upgrades were made in areas such as upholstery where we use Airtech material which is lightweight but tough and comfortable for longevity. Titanium fixings are used to cut down on weight and prevent corrosion along with many other changes to cut down on weight without compromising on rigidity and stability.
- **TRANSPORTWEIGHT.** Refers to the weight of the product minus wheels and cushion. This is the product weight when transferring into the car etc.
- **PRODUCTWEIGHT.** Refers to the total weight of the product, this is including the wheels and cushion.
- **MADE TO MEASURE.** Refers to the RGK made to measure process. All made to measure products are hand crafted from a straight tube by a single individual. Our wheelchairs are crafted to fit the rider where they can determine measurements to millimetre precision, unlike other made to measure products that are configurable sizes.
- **ERGONOMIC OPTIONS.** Refers to the options that only made to measure can offer. Options include ergonomic backrests, seats and front frame. These are unique measurements that allow the frame to be contoured to the rider's body to aid with balance and comfort.
- **STIFFNESS.** Refers to the rigidity of the frame based in the material type and options. The less stiff a frame is, the more vibrations it absorbs making it a more comfortable ride. While a stiffer frames is more efficient for optimum performance.
- **EFFICIENCY.** Refers to the distribution and transfer of energy while pushing the wheelchair. Less efficient wheelchairs absorb energy and vibration to create a smooth ride whereas more efficient wheelchairs transfer energy directly, so riders need less energy to push.
- **TRI FRAME CHASSIS.** Refers to the brand new frame design that better distributes the energy created during play across more sections of the chair for optimum strength and reliability.
- **Y FRAME CHASSIS.** Refers to the brand new frame design that lowers the center of gravity to deal with direct contact.
- **RIDER EXPERIENCE.** Refers to the rider's wheelchair skills, ability and experience. A new rider could be newly injured or experiencing sports for the first time whereas an experienced rider is looking for optimum performance and/or comfort. RGK has a range of wheelchairs available to cover all levels of experience.





[www.rgkwheelchairs.com](http://www.rgkwheelchairs.com)

RGK Wheelchairs Ltd.  
Unit 8a/b/c Ring Road Zone 2,  
Burntwood Business Park,  
Burntwood, Staffordshire, WS73JQ, UK

Phone +441543670077  
Email: [sales@rgkwheelchairs.com](mailto:sales@rgkwheelchairs.com)



VERSION : 19.12.23