



COBI REHAB

Product Catalogue

Assistive products for patients with special needs



2024

Table of Content



Who Are We? 4

Bariatric Shower and Toilet 5

Shower Chair Clean	6
Shower Commode	7
Shower Commode Wheeler	8
Shower Commode Tilt	9
Shower Commode Rise N Tilt	10



Bariatric Mobility 11

Stand Tall Walker	12
Rollator King	13
Rollator Support	14
Elbow Crutch, 4-point and Walking Cane	15
Walking Frame	16



Bariatric Wheelchairs, Chairs and Seat Cushions 17

Patient/Dinner Chair	18
Minimaxx Wheelchair	19
Minimaxx Push Wheelchair	20
Transporter Wheelchair	21
Eclipse Wheelchair	22
Eclipse Tilt Wheelchair	23
Cruise Comfort Wheelchair	24
Cruise Power Comfort Wheelchair	26
Wheelchair Cushions	27



Bariatric Mattresses 28

Alternating Pressure Mattress	29
Comfort Mattress	30



Positioning Cushions 31

Hygiene cushions	32
Flotation cushions	33
Cobi Positioning Cushions	34
Lasal Positioning Cushions	35
Lasal Sit Sack	36
Dental Cushions	37



Positioning Products 38

MobiBed - mobile rest trolley	39
Kamille Comfort Wheelchair	40
Kamille Power Comfort Wheelchair	42
Kamille Back Support	43
Cobi Sky Positioning Mattress	44

Meet The Export Team	45
Meet Our Therapists	45

Who Are We?

Cobi Rehab is a pioneering Danish company developing and producing assistive products. We are located in Copenhagen, 7 minutes from Copenhagen International airport.

We are dedicated to enhancing the quality of life for patients who are dealing with bariatric, neurological, geriatric, palliative, and pain-related conditions.

We stand for a high level of innovation and quality. Our products are meticulously crafted through a close collaboration with caregivers, patients, clinical personnel and our own therapists and engineers.

Our team of physiotherapists and occupational therapists ensures a holistic approach, respecting the unique needs of each patient. At Cobi Rehab, our commitment goes beyond the ordinary, and our products are a result of a broad knowledge in the medical and therapeutic field and experience in the patient groups both practically and theoretically.

All our products are designed with a deep understanding of the patient and the entire care team, resulting in numerous details for improving the working environment as well as improving the quality of life.

All our products are CE marked and comply with MDR and the relevant standards.

Discover our catalogue where each product contains a story of dedication, innovation, respect, and relentless pursuit of improving quality of life for each patient.



Cobi Rehab, Fuglebækvej 1D, DK-2770 Kastrup, Denmark
Tel. [+45 7025 2522](tel:+4570252522), E-mail: cobi@cobi.dk, cobirehab.com

Bariatric Shower and Toilet

In shower and hygiene situations involving debilitated patients, dignity should be prioritized.

When developing all our Shower and Toilet products we have focussed on comfort, adjustment possibilities, on simplifying hygiene routines, providing easy cleaning or disinfection, and optimizing the caregivers' working environment.

The aim is to make assisted showering and hygiene routines not just safer and more comfortable but also a more dignified experience. These products enable safe, efficient, and accessible tissue and hygiene care.

All our Shower and Toilet products have a maximum user weight up to 325 kg.



Shower Chair Clean

Shower Chair with adjustable seat depth



- **Max user weight 325 kg**
- **Combined bedside commode and shower chair**
- **Adjustable seat high and depth.**

Strong and wide shower chair designed with curved armrests. The curved armrest ensures that the patient’s body does not get squeezed getting in and out of the shower chair.

The backrest of the Shower Chair Clean can be adjusted +/- 60 mm in total allowing additional seat depth. The seat height is adjustable. For hygiene purposes the seat opening can be placed anterior or posterior.

The frame is made of lightweight tubes ensuring maximum stability and low weight. The tubes are surface treated.

The frame and the easy removeable seat are cleaned using a regular detergent or disinfected with ethanol.

Bucket with lid is included.

Specifications

Maximum user weight	325 kg
Seat width	610/710 mm
Seat depth-adjustable	400-520 mm
Seat height-adjustable	440-590 mm
Distance between armrests	650/750 mm
Total width	730/830 mm
Total height	790-940 mm
Width/length toilet opening	Ø 180/240 mm, length 400 mm
Seat/back/armrests	Polyurethane
Frame	Powder-coated steel
Weight (610 mm/710 mm)	14/15 kg

Shower Commode

Shower commode with swing away arm rests



- **Max user weight 325 kg**
- **100 kg weight capacity on each footrests**
- **Rear wheels with individual brakes.**

Strong and wide shower commode with space under the backrest under for the tissue in the gluteal region. Made of lightweight tubes ensuring maximum stability and low weight. Two different types of armrests are available: standard armrests or butterfly armrests.

The design of the Shower Commode ensures easier and safer access to intimate hygiene. Adjustable footplates help keeping legs abducted. For hygiene purposes the seat opening can be placed anterior or posterior.

Frame and the easy removeable seat are cleaned using a regular detergent or disinfected with ethanol.

Bucket with lid is included.

Specifications

Maximum user weight	325 kg
Total length	1170 mm
Total width with standard armrests (without footrests)	690/790 mm
Total width with butterfly armrests (without footrests)	870/970 mm
Seat width with standard armrests	610/710 mm
Seat width with butterfly armrests	750/850 mm
Seat depth	560 mm
Seat height	550 mm
Width between armrests	60 mm
Width/length toilet opening	Ø 180/240 mm, length 400 mm
Distance from ground to under the seat	445 mm
Turning radius	1580 mm
Frame	Powder-coated steel
Total weight (model 61 cm/71 cm)	27 kg

Shower Commode Wheeler

Ensuring greater independence for the user



- **Max user weight 325 kg**
- **100 kg weight capacity on each footrests**
- **24" rear wheels for individual directional stability.**

Strong and wide shower commode with space under the backrest for the tissue in the gluteal region.

Made of lightweight tubes ensuring maximum stability and low weight. Two different types of armrests are available: standard armrests or butterfly armrests.

The design of the Shower Commode Wheeler ensures easier and safer access to intimate hygiene. Adjustable footplates help keeping legs abducted. For hygiene purposes the seat opening can be placed anterior or posterior.

Frame and the easy removeable seat are cleaned using a regular detergent or disinfected with ethanol.

Bucket with lid is included.



Specifications

Maximum user weight	325 kg
Total length	1290 mm
Total width with standard armrests (without footrests)	810/910 mm
Total width with butterfly armrests (without footrests)	870/970 mm
Seat width with standard armrests	610/710 mm
Seat width with butterfly armrests	750/850 mm
Seat depth	560 mm
Seat height	550 mm
Width between armrests	600 mm
Width/length toilet opening	Ø 180/240 mm, length 400 mm
Distance from ground to under the seat	445 mm
Turning radius	1580 mm
Frame	Powder-coated steel
Total weight (model 610 mm/710 mm)	33 kg

Shower Commode Tilt

Making hygiene routines easier and safer for the caregiver



- **Max user weight 325 kg**
- **30° electric tilt**
- **Allows safe, efficient and accessible tissue and hygiene care.**

With a 30° electric tilt, the Shower Commode Tilt raises the efficiency of care because it enables a single caregiver to perform the whole showering procedure, as well as a wide range of everyday hygiene tasks.

The Shower Commode Tilt consists of lightweight steel tubes ensuring maximum stability and low weight. The Shower Commode Tilt has two different types of armrests: standard armrests and butterfly armrests.

Each footplate can carry 100 kg and is side adjustable. The frame and the easy removeable seat are cleaned using a regular detergent or disinfected with ethanol.

Bucket with lid is included.



Specifications

Maximum user weight	325 kg
Total length	1400 mm
Total width with standard armrests (without footrests)	720 mm
Total width with butterfly armrests (without footrests)	860 mm
Seat width with standard armrests	610 mm
Seat width with butterfly armrests	750 mm
Seat depth	420/480/560 mm
Width/length toilet opening	Ø 180/240 mm, length 400 mm
Distance from ground to under the seat	445 mm
Distance from ground to push bar	1000 mm
Turning radius	1580 mm
Frame	Powder-coated steel
Total weight	39 kg
Wheels/Rear wheels	Ø 150 massive with brakes

Shower Commode Rise N Tilt

Carefully lifting and tilting of a bariatric patient to a 30° angle



- **Max user weight 325 kg**
- **Electric Tilt and Lift function**
- **Allows safe, efficient and accessible tissue and hygiene care.**

The Shower Commode Rise N Tilt enhances the quality of life for the patient making assisted showering and other hygiene routines not only safer and more comfortable, but also a more dignified experience.

The high level of support provided by the Shower Commode Rise N Tilt results in streamlined routines. This means considerable time savings compared with traditional methods.

The Rise N Tilt consists of lightweight steel tubes ensuring maximum stability and low weight. The shower commode has two different types of armrests: standard armrests and butterfly armrests.

Each footplate can carry 100 kg and is side adjustable. Frame and seat are cleaned using a regular detergent or disinfected with ethanol.

Bucket with lid is included.

Specifications

Maximum user weight	325 kg
Total length in lowest position	1400 mm
Total width with standard armrests (without footrests)	740 mm
Total width with butterfly armrests (without footrests)	850 mm
Seat width with standard armrests	610 mm
Seat width with butterfly armrests	750 mm
Seat depth-adjustable	420/480/560 mm
Width/length toilet opening	Ø 180/240 mm, length 400 mm
Distance from ground to under the seat	445 mm
Distance from ground to push bar	1000 mm
Turning radius	1580 mm
Frame	Powder-coated steel
Total weight	46 kg
Wheels/Rear wheels	Ø 150 massive with brakes
Up/down capacity with fully charged battery	Approx. 15 times
Control box	LINAK
Four actuators	LINAK A20/A40

Bariatric Mobility

Rehabilitation is central to the journey of regaining one's health and mobility. For many bariatric patients, this recovery path can lead them from being bedridden to becoming independent.

This is why Cobi Rehab offers an extensive range of mobility products for bariatric patients, ranging from Stand Tall Walkers designed for those at the initial stages of rehabilitation to heavy-duty rollators suitable for independent patients. This ensures that regardless of the specific level of need, we have an appropriate mobility solution.

Our products are reliable and stable, providing safety for both caregivers and patients.

All our Mobility products have a maximum user weight up to 200/270/325 kg.



Stand Tall Walker

Lockable handbrakes and brakes on rear wheels



- **Max user weight 325 kg**
- **Used in rehabilitation for safe mobilising, standing and walking**
- **Adjustable height and underarm support.**

The Stand Tall Walker consists of a wide, strong frame of 32 mm tubes and four massive wheels.

It has lockable hand brakes, parking brakes, padded forearm supports, and a side plate for mounting e.g., a urine bag. The height of the forearm supports can be adjusted from 1000-1300 mm without the use of tools.

By using the inner handles, the patient can slowly stand up from the bed or chair while maintaining the stability and control of the walker. Together, it reduces the risk of falls.

The frame and the padded forearms of the Stand Tall Walker are cleaned using a regular detergent or disinfected with ethanol.



Specifications

Maximum user weight	325 kg
Total length	730 mm
Total width	800 mm
Total width (with IV-holder)	920 mm
Width between underarm support, from center to center, adjustable	590-690 mm
Turning radius	2000 mm
Height, adjustable in 25 mm intervals	1000-1300 mm
Weight	20 kg
Massive wheel	Yes, 100 mm
Frame	Powder-coated steel
Underarm support	PU

Rollator King

One of the strongest rollators on the market

- **Max user weight 325 kg**
- **Foldable and with back rest and basket**
- **Safe during activity and easy to use as a seat.**



The Rollator King fits through doorways and folds easily for transport in motor vehicles and storage.

The Rollator King is equipped with stable brakes, which can lock as parking brakes or manual brakes. The two types of brakes ensure control and safe maneuvering. It comes with a basket (weight capacity 5 kg) and the handles are fitted with reflectors.

The back rest ensures the weight of the patient is evenly distributed on the seat when resting on it. This way the risk of tipping is prevented significantly.

The upholstered seat and the safety back rest can be exchanged when switching to a new patient.

The frame, seat, handles, and safety back rest of the rollator are cleaned using a regular detergent or disinfected with ethanol.



Specifications

Maximum user weight	325 kg
Total length	850 mm
Total width	740/840 mm
Width between handles	610/710 mm
Height-adjustable in 2.5 cm intervals	770.5 - 990 mm
Seat width	510 mm
Seat depth	370 mm
Seat height	500 mm
Weight	15.7 kg
Wheels	8" massive
Frame	Powder-coated steel, SAE4130

Rollator Support

Can be used as a resting chair when the brakes are locked



- **Max user weight 200 kg**
- **Foldable**
- **Forearm supported rollator that minimizes pressure on wrists.**

The height-adjustable forearm supports of the rollator assist the patient driving the rollator forwards in an upright position and at the same time relieve the wrists. The rollator can easily be folded.

When the patient is resting on the seat, the safety back rest ensures the weight of the patient is evenly distributed on the seat.

If the patient needs a rollator, the underarm supports can be removed and replaced with handles (See Rollator King).

The frame, seat, handle, and safety back rest of the rollator are cleaned using a regular detergent or disinfected with ethanol.



Specifications

Maximum user weight	200 kg
Total length	850 mm
Total width	740/840 mm
Width between handles	610/710 mm
Height-adjustable in 25 mm intervals	100 - 130 mm
Seat width	510 mm
Seat depth	370 mm
Seat height	510 mm
Weight	17 kg
Foldable	Yes
Frame	Powder-coated steel, SAE4130
Seat and back	Polyurethane
Wheel	8" massive

Elbow Crutch, 4-point and Walking Cane

Provides support and safety while walking



Elbow Crutch

- Max user weight 325 kg
- Height-adjustable
- Three types of handgrips available.

The Elbow Crutch is an extra reinforced bariatric crutch, which can be height-adjusted. The handgrip is anatomically shaped and has a reflex. Three types of handgrips (left, right, universal) are available.

Both crutches and canes are cleaned using a regular detergent or disinfected with ethanol.

4-point Cane

- Max user weight 270 kg
- Height-adjustable
- Provides safety and stability while walking.

The 4-point Cane is supplied with a dual button height adjustment, a rubber handle, and a wrist strap.

Walking Cane

- Max user weight 270 kg
- Height-adjustable
- Curved “neck” for stability and safety.

The Walking Cane is supplied with two release buttons for height adjustment, a rubber handle, and a wrist strap.

Specifications

Maximum user weight 4-point and Walking Cane	270 kg
Maximum user weight Elbow Crutch	325 kg
Material (crutches and canes)	Steel, SAE4130
Reflex on grips	Yes
4-point Cane height-adjustable	710 - 930 mm
4-point Cane weight	1.5 kg
4-point Cane base size	L 180 x W 300 mm
Elbow Crutch height-adjustable	670 - 850 mm (from floor to grip)
Elbow Crutch weight	1.5 kg
Walking Cane height-adjustable	710 - 930 mm
Walking Cane weight	0.9 kg
Grip on 4-point Cane and Walking Cane/Elbow Crutch	Thermoplastic rubber (TPR)/Nylon with fibre

Walking Frame

Provide support and safety while walking and standing



- **Max user weight 325 kg**
- **Foldable and available with or without wheels**
- **Trustful and stable walking support.**

The Walking Frame is a foldable walking aid, available in two widths, either with ferrules or with two massive wheels in front. The leg height can be adjusted on both types of walking frames without the use of tools.

The two rear legs ensure that the Walking Frame does not roll away if the patient is instable or loses balance.

The strong steel construction and the angled legs make it very stable. The Walking Frame can easily be folded for transportation or storage.

The Walking Frame is cleaned using a regular detergent or disinfected with ethanol.

Specifications

Maximum user weight	325 kg
Total length	500 mm
Total width (legs) Size 1	740 mm
Inside width (handles) Size 1	540 mm
Total width (legs) Size 2	840 mm
Inside width (handles) Size 2	640 mm
Weight	3 kg
Adjustable height in 25 mm interval	760-1010 mm
Material	S235 steel
Grip	PU foam

Bariatric Wheelchairs, Chairs and Seat Cushions

A wheelchair for a bariatric patient is not a regular double-width wheelchair.

A bariatric wheelchair is developed with profound understanding of the mechanisms around the various bariatric body shapes. We have many years of experience in independently developing wheelchairs for bariatric patients. As a result, we have acquired great expertise in this field, providing benefits to numerous patients.

With a multitude of adjustment options and a constant focus on support and accessories, our range includes transport wheelchairs for efficient transport and comfort wheelchairs that enable patients to participate in social activities and carry out personal tasks.

We provide both manual wheelchairs and electric propulsion wheelchairs, with many of them having undergone crash testing, making them suitable for use as a vehicle seat.

All our bariatric wheelchairs products have a maximum user weight up to 270/325 kg.

Patient/Dinner Chair

Minimalistic design that suits waiting rooms as well as private homes

- **Max user weight 325 kg**
- **Available in two seat widths**
- **Adjustable seat high and depth.**



The Patient/Dinner Chair is equipped with a wide seat and curved armrests which ensures good space between the armrests. The seat depth can be adjusted in three different depths +/- 60 mm in total.

The armrests extend beyond the seat surface, which makes it easier to get a good grip when getting in and out the chair.

The seat height is adjustable from 440-590 mm. The height of the legs can be adjusted in six positions.

The Patient/Dinner Chair is cleaned using a regular detergent or disinfected with ethanol.

Specifications

Maximum user weight	325 kg
Seat width	610/710 mm
Seat depth-adjustable	400-520 mm
Seat height-adjustable	440-590 mm
Distance between armrests	650/750 mm
Total width	730/830 mm
Total height	790-940 mm
Total length (from leg to backrest)	800-1010 mm
Seat/back/armrests	Polyurethane
Frame	Powder-coated steel, SAE4130
Weight (610 mm/710 mm)	16.5/17.5 kg

Minimaxx Wheelchair

Foldable and strong, manual wheelchair



- **Max user weight 325 kg**
- **Foldable**
- **Amputation support available.**

The rear wheels carry most of the patients' weight, making it easier for caregivers to push the wheelchair. Furthermore, the push handles are height-adjustable. The low seat height makes it easy to get in and out of the chair and to drive the wheelchair forward.

Extra-long armrests make it easy for the patient to get in and out of the wheelchair. The footrests can carry up to 100 kg each and can be adjusted in height and width.

The Minimaxx Wheelchair is cleaned using a regular detergent or disinfected with ethanol.

Seat cushion for the Minimaxx Wheelchair is ordered separately.



Specifications

Maximum user weight	325 kg
Seat depth	460 mm
Seat width	560/610/660/710 mm
Back height	510 mm
Total width folded	410 mm
Total height	1100 mm
Total length without footrests	700 mm
Total width	700/750/800/850 mm
Weight	27 kg
Footrests and push handle height adjustable	Yes
Armrests and standard footrests removable	Yes
Frame	Powder-coated steel, SAE4130
Rear wheels	24" massive PU

Minimaxx Push Wheelchair

User-friendly control panel and speed up to 4 km/h



- **Max user weight 200 kg**
- **Push motor for mounting on a Minimaxx Wheelchair**
- **Push Motor reduces workload for caregivers.**

The Minimaxx Push Wheelchair is equipped with disc brakes and parking brakes. The wheelchair also brakes when the speed lever of the push motor is released.

The Minimaxx Push Wheelchair is intended for slopes of up to 6° at a 200 kg load. The disc brake system provides a high degree of safety especially downhill.

The control panel is located on the handle. The status of the battery can be seen at the top of the panel. Below are the back-and-forth buttons as well as the rotary button, which control the speed (1-4 km/h). The Minimaxx Push Wheelchair is used indoors and outdoors.

The Minimaxx Push Wheelchair is cleaned using a regular detergent or disinfected with ethanol.

Seat cushion for the Minimaxx Wheelchair is ordered separately.

Specifications

Maximum user weight for efficient push motor	200 kg
Battery	24V 450W 4,5 amp.
Weight battery	9 kg
Total weight of the Push Motor	23 kg
Tire size	8" massive tyres x 2
Charger capacity	Off Board (1.8A)
Battery capacity	2 pcs 12V 12ah
Maximum speed	4 km/h
Max inclination	6°
Reverse function	Yes

Transporter Wheelchair

Extra-long armrests making it easier getting in and out of the wheelchair



- **Max user weight 325 kg**
- **Basket under chair for easy storage of belongings**
- **100 kg weight capacity on each footrest.**

The Transporter Wheelchair is often used in e.g. hospitals making patient transport possible for the independent patient as well as for staff. It comes with 24” rear wheels providing stability and easy steering. The wheelchair has a basket for storing personal belongings.

The space between backrest and seat has a clearance of 320 mm. The clearance provides good space for patients with a protruding behind.

The footrests are height and side adjustable. The armrests are extra-long and can be removed.

The Transporter Wheelchair is cleaned using a regular detergent or disinfected with ethanol.



Specifications

Max user weight	325 kg
Seat width with standard armrests	710 mm
Total outer width with standard armrests	780 mm
Seat depth	560 mm
Backrest	320-520 mm
Push bar distance from the floor	1000 mm
Width between armrests	540 mm
Height of backrest	480 mm
Distance from floor to seat underside	445.5 mm
Total length	1290 mm
Total weight	30 kg
Front wheels	125 mm
Rear wheels	24”
Frame	Powder-coated steel, SAE3140

(The Transporter Wheelchair is not a stock item. Expect longer delivery time.)

Eclipse Wheelchair

Adjustable seat depth and inclination as well as the angle of the backrest



- **Max Max user weight 270 kg, can be reinforced up to 450 kg**
- **Crash tested according to ISO 7176-19**
- **9 available seat widths.**

The Eclipse Wheelchair is a manual fixed, strong steel frame wheelchair providing maximum strength, and long durability. Massive tyres make propulsion and steering easy.

It is equipped with anti-tip supports and has a solid seating plate making it easier to exit the wheelchair.

The Eclipse Wheelchair can be reinforced to a patient weight up to 450 kg, and the seat width can be extended by means of an Eclipse Grow-kit.

A strap back helps patients with a protruding behind obtaining a good lumbar support.

The Eclipse Wheelchair has adjustable seat depth, seat height and seat angle providing several adjustment options.

Footrest and seat cushion are ordered separately.

Specifications

Maximum user weight	270/450 kg
Crash tested	Yes, according to ISO 7176-19
Seat depth	410 - 610 mm
Seat width	500 - 1120 mm
Seat height	356 - 508 mm
Strap back rest	Polypropylene
Back angle	85° - 100°
Length including footrests	1180 mm
Total width	Seat width + 190 mm
Weight wheelchair	40 kg
Static stability downhill/uphill	Max 12°
Rear wheel	24" (580 mm x 30 mm)
Frame material	Tubular steel
Push bar, adjustable	Yes
Turning radius (Pivot)	1545 mm

Eclipse Tilt Wheelchair

Tilt function providing individual optimal comfort and positioning



- **Max user weight 270 kg**
- **Attendant operated tilt with ease**
- **Available in seat width 550/610/660/720/820 mm.**

The Eclipse Tilt Wheelchair is a manual fixed, strong steel frame wheelchair providing maximum strength, rigidity, and long durability. Massive tires make propulsion and steering easy.

Tilting the Eclipse Tilt Wheelchair is done using the tilt lever on the side of the push handle.

The Eclipse Tilt Wheelchair can easily tilt users up to 270 kg and ensures pressure relief and positioning.

A strap back helps patients with a protruding behind obtaining a good lumbar support.

The wheelchair has adjustable seat depth, seat height and seat angle providing several adjustment options.

Footrest and seat cushion are ordered separately.

Specifications

Maximum user weight	270 kg
Seat depth	410 - 560 mm
Seat width	550 - 820 mm
Seat height	410 - 510 mm
Strap back rest	Polypropylene
Back angle	90 - 122°
Total length without footrests	870 mm
Total width	Seat width + 250 mm
Weight wheelchair	40 kg
Static stability downhill/uphill	Max 10°
Rear wheel	24" (580 mm x 30 mm) massive PU
Frame material	Tubular steel
Seat upholstery	Polyester with PVC
Push bar, adjustable	Yes

Cruise Comfort Wheelchair

The most powerful wheelchair on the market for use in the rehabilitation of bariatric patients



- Max user weight 325 kg
- Crash tested according to 7176-19
- Electric tilt-in-space, recline and back angle function
- Adaptable to any bariatric body shape.



The Cruise Comfort Wheelchair is designed entirely by Danish engineers and Danish occupational therapists and produced in the EU.

Features like adjustable push bar, electric tilt-in-space, and recline reduce the risk of physically overloading the caregiver, while still allowing maximum comfort, mobility, and social life for the patient.

Other features making Cruise Comfort Wheelchair one of the best wheelchair for use in the rehabilitation of bariatric patients are armrests that can swivel back or be “pushed down” for e.g., transfers or social activities at a table. As well as the legrests which each support up to 200 kg and are adjustable in both height and angle. The legrests also have a swivel function that allows easier access to and from the wheelchair.

The Cruise Comfort Wheelchair is equipped with two 24” drive wheels and two parking brakes which can be operated by both patient and caregivers.

The wheelchair is disinfectable and washable (IPX6).

The width of The Cruise Comfort Wheelchair can be customized.

Construction

The Cruise Comfort Wheelchair frame is constructed from S355, high-tensile steel. The profiles are strategically placed to accommodate the different body shapes. Three back plates are mounted on the back profile and are curved to hug and support patients with both apple-shaped and pear-shaped bodies.

Patients with a pear-shaped body with voluminous backsides are ensured good back support because of the design of the back profile and the lower back plate.

The upper two back plates ensure that patients with apple-shaped bodies enjoy stable and comfortable back support.

The back cushion is divided into nine modules. The contents of each cushion module can be adjusted via nine zippers located on the back of the cushion.

The modular cushions follow the shape of the back plates and ensure correct support regardless of patient body shape and needs. Further adjustments are made via the FitGo system located on the back plates.



Specifications

Maximum user weight	325 kg
Crash tested	Yes, according to ISO 7176-19
Seat depth	480-600 mm, at 30 mm intervals
Back angle	90°- 120°, continuously variable
Seat angle	-4 - 13°
Height from front of seat to ground (Height stated without cushion. Add 100 mm if cushion included)	337-551 mm
Height of back rest	613 mm
Max length excl. footrests / incl. footrests	Approx. 1246 mm - 1773 mm
Min length excl. footrests / incl. footrests	Approx. 987 mm - 1054 mm
Seat width	550-800 mm, at 50 mm intervals. 100 mm between 700 and 800 mm
Max total width	676-926 mm
Max total height	1115 mm
Max weight of wheelchair	100 kg
Max downhill/uphill inclination	10°
Massive tyres	Massive tyres with PU core
Frame tubing (material)	Type-S355, high-tensile steel
Push bar	Type-S355, high-tensile steel
Foot plate	Type-S355, high-tensile steel
Turning radius (Pivot)	1000-1200 mm
Actuators, control box, controller	LINAK LA23/LINAK/LINAK HB30

Cruise Power Comfort Wheelchair

Freedom to move with the Danish designed Cruise Power Comfort Wheelchair



- **Max user weight 325 kg**
- **With electric propulsion**
- **Electric tilt-in-space, recline and back angle function.**

The design of the Cruise Power Comfort Wheelchair addresses the daily challenges faced by bariatric patients, aiming to enhance their quality of life. Evaluated by Danish bariatric patients, the development of the Cruise Power Comfort Wheelchair has benefitted from valuable suggestions for improvement.

Operating a Cruise Power Comfort Wheelchair provides the freedom to move. Patients can transition from a state of bedridden dependence to newfound autonomy and independence.

The joystick can be installed on the supplied swivel bracket allowing the patient to manoeuvre the wheelchair and to adjust the seat and the back.

An extra joystick controlling the same functions can be installed on the push bar. The caregiver's joystick will in this case determine who controls the wheelchair.

The wheelchair can reach a speed of up to 6 km/h. The power wheelchair is disinfectable and washable (IPX4).

Specifications

Maximum user weight	325 kg
Crash tested	Yes, according to ISO 7176-19
Max weight of wheelchair	120 kg
Max height of curb which the wheelchair can safely traverse	50 mm
Max downhill/uphill inclination	10°
Massive tyres	Nylon tyres with PU core
Speed at electric propulsion	6 km/h
Theoretical continuous distance at max weight capacity	Approx. 9 km
Theoretical manoeuvring distance	3.9 km
Turning radius (Pivot)	1000-1200 mm
Actuators, control box, controller	LINAK LA23/LINAK/ Curtiss-Wright R-net PM120

(For more specifications see Cruise Comfort Wheelchair)

Wheelchair Cushions

Bariatric wheelchair cushions in many different widths



Comfort Wheelchair Cushion

- **Max user weight 325 kg**
- **PU incontinence cover**
- **Flat surface.**

The Comfort Wheelchair Cushion is a standard cushion providing pressure relief in the wheelchair. It consists of a 30 mm viscoelastic foam layer at the top. The base is made of a Heavy Duty PUR foam with springs that cut into the under base of the foam.

Visco Comfort Wheelchair Cushion

- **Max user weight 325 kg**
- **PU incontinence cover**
- **Anatomically shaped.**

The Visco Comfort Wheelchair Cushion is an anatomically shaped wheelchair cushion providing pressure relief. It consists of a moulded 110 mm base made of a Heavy Duty PUR foam and with a 30 mm visco-elastic foam on the top. The moulded base provides increased stability and seat support.

The two wheelchair cushions cannot be washed in a washing machine but is disinfected with ethanol.

The incontinence covers are cleaned using a regular detergent or machine washed at max 95°C and tumble dried.

Specifications

Maximum user weight	325 kg
Comfort Cushion weight	2 kg
Visco Comfort Cushion weight	3 kg
Washable, PU incontinence cover	Yes
Base cushion	HD PUR foam and visco elastic PUR foam
Visco Comfort Cushion seat width	560/610/660/710/810/910/96/1000 mm
Visco Comfort Cushion seat height and depth	500 mm/140 mm
Comfort Cushion seat width	550/610/660/720/820 mm
Comfort Cushion seat height and depth	450 mm/120 mm

Bariatric Mattresses

Prioritizing comfort in the lying position is important for us all and is particularly significant for patients with limited mobility.

Our alternating mattresses and foam mattresses, designed to accommodate bariatric patients, address the specific needs of severely overweight patients, in comfort and in reducing the risk of pressure ulcers.

The core advantage of our mattresses lies in the ability to distribute weight evenly and minimizing the pressure points.

This not only improves the overall comfort of bariatric patients but also aligns with preventive measures against potential other health issues. Furthermore, a restful night's sleep can serve as a catalyst for continued rehabilitation efforts.

All our bariatric mattresses have a maximum user weight up to 270/325 kg.



Alternating Pressure Mattress

Extra-width mattress for preventing and treatment of pressure ulcers



- Max user weight 270 kg
- For prevention and treatment of pressure ulcers
- Available in two widths and two lengths.

Bariatric Alternating Pressure Mattress consists of 20 air cells made of a reinforced plastic material. The pump unit ensures that the air is alternately pumped in or emptied out of every second air cells (1, 3, 5 etc.). The air cells can be replaced individually.

The alternating pressure also contributes to the improvement of blood circulation. The cycle time is set manually.

The cover is washable, breathable, protected against liquid penetration and flame retardant. The mattress is cleaned using a regular detergent or disinfected with ethanol 70-85%. This also applies to power supply, power cable and hoses.

Specifications

Maximum user weight	270 kg
Length	2000/2200 mm
Width	1000/2200 mm
Height	270 mm
Weight	14/18 kg
Can be applied directly to (adjustable) bed base	Yes
Autofirm function and Quick emptying function	Yes (CPR-valve)
Cell material	Nylon/PU
Mattress base material	PU
Flame retardant cover and mattress	Yes
Pump measurements	350 x 240 x 130 mm
Weight of pump	3,8 kg
Pressure range	10-70 mm Hg
Cycle time	10, 15, 20 and 25 min.
Air loss and power failure alarm	Yes
Fuses (2 pieces)	Yes. T1A/250V
Power input	AC220-240V/50 Hz

Comfort Mattress

Foam mattress for bariatric patients needing extra width



- **Max user weight 325 kg**
- **Pressure relives and ensures mobility**
- **Available in three widths and two lengths.**

Bariatric Comfort Foam Mattress is designed for prevention and treatment of pressure ulcers for low-risk categories.

The foam mattress is made up of two different layers of quality foam. The base layer is a thick base layer of Heavy Duty PU foam cut into springs. The top layer consists of 30 mm viscoelastic foam, which provides comfort and pressure relief.

The cover is washable, breathable, stretchable, and anti-bacterially treated on the surface. It is protected against liquid penetration and flame retardant.

The cover is washed at 95°, tumble dried or disinfected with ethanol.

Specifications

Maximum user weight	325 kg
Length	2000/2200 mm
Width	1000/1200/1400 mm
Height	180 mm
Weight	12/13 kg
Can be applied directly to the (adjustable) bed base	Yes
Mattress base material	Heavy Duty PU foam
Mattress top material	Visco elastic PUR foam
Flame retardant mattress	Yes
Washable and disinfectable incontinence cover	Yes
Cover material	100% polyurethane
Flame retardant cover	Yes
The cover complies with the ROHS directive	Yes

Positioning Cushions

Probably the world's largest selection of positioning cushions.

Discover a versatile range of positioning cushions designed to accommodate different needs. Our cushions offer stability, support, tactile and proprioceptive stimuli. They also effectively ensure pressure distribution, accommodating various positioning requirements for patients of all ages, shapes, and sizes, including bariatric care.

Whether the focus is on tight and close body positioning for stability, or ensuring comfort during dental treatments, our products enhance the patient's comfort in all rest positions.

Some of our positioning cushions are designed for water therapy or for everyday hygiene situations. These cushions provide safety, support and dignity while increasing independence benefitting both patients and caregivers.

With features like easy disinfection and adaptability to different surfaces, our positioning cushions are tailored to create comfort, support, and enhancing the quality of life for the patient.



Hygiene cushions

Hygiene Cushion create stability, comfort, and self-help for many patient groups



- **Creates safety, support, and dignity in hygiene situations**
- **Increase independence when patients are comfortably positioned**
- **Withstands washing and disinfection.**

Our range of hygiene cushions is used by e.g., generally debilitated patients or patients with severe malpositions.

The Hygiene Cushions also benefit the working environment of the caregiver because the stable positioning of the patient reduces the risk of the patient slipping or ending up in an inappropriate position.

After use rinse the Hygiene Cushions thoroughly and hang them up as soon as possible. The core of the hygiene cushion dries very slowly.

Hygiene Cushions should be dedicated to one single patient at a time. This is done to avoid cross-contamination.

7 different cushions in variable shapes and sizes.



Specifications

Filling	Fire retardant beads of expanded polystyrene
Outer cover top	100% polyester
Outer cover underside	100% polyester net fabric
Washing instructions	Wash at at 60°C in a fine mesh laundry bag in a larger washing machine
Tumble dry	Tumble dry at temperatures not exceeding 60°C
Disinfection	Disinfect using a disinfectant where the pH do not exceed 11.4.

Flotation cushions

Comfort and stability in water therapy



- **Creates safety, support, and dignity in water therapy**
- **Increase independence when patients are comfortably positioned**
- **Withstands washing and disinfection.**

Our range of Flotation Cushions are developed to obtain comfort and stability when in water, e.g., for therapy and rehabilitation. They also maximize mobility, movement, and joy.

For therapists the Flotation cushions enhance the ability to perform exercises in the water, where otherwise two therapists would be needed.

After use in chlorinated pool water rinse the outer cover thoroughly in non-chlorinated water and leave to dry. Expect long drying time.

16 different cushions in variable shapes and sizes.



Specifications

Filling	Fire retardant beads of expanded polystyrene
Outer cover top	100% polyester
Outer cover underside	100% polyester net fabric
Washing instructions	Wash at 60°C in a fine mesh laundry bag in a larger washing machine
Tumble dry	Tumble dry at temperatures not exceeding 60°
Disinfection	Disinfect using a disinfectant where the pH do not exceed 11.4.

Cobi Positioning Cushions

A stable and almost heavy positioning solution



- Many different shapes and sizes to accommodate different positioning needs
- Provides stability, support and increases pressure distribution
- Used within all patient groups incl. bariatrics.

The design of the Cobi Positioning Cushions focuses on the ability to position the cushions tightly and close to the patient's body. This ensures stability and that the filling of cavities distribute the pressure over an area as wide as possible.

In this way, the patient remains in the desired, natural position, without any resistance in the joints, nerve and/or muscle tissue.

In addition to reducing pressure and increasing pressure distribution, the slightly heavy cushions are particularly suitable for reducing spasticity, as well as providing tactile stimuli and the sense of being cocooned.

20 different cushions in variable shapes and sizes.



Specifications

Filling materials	Beads of expanded polystyrene, SEBS granules, cold-cured foam, and viscoelastic foam. Content are adapted to each cushion type.
Cushion surface	Breathable, waterproof, polyamide impregnated with PU and anti-bacterially treated.
Cushion washing instructions	Do not withstand machine washing but is cleaned using a regular detergent or disinfected with ethanol.
Hygiene cover	Breathable, waterproof, polyamide impregnated with PU, anti-bacterially treated and flame retardant.
Hygiene cover washing instructions	Wash at 60°C and tumble dry.
Jersey cover	Cotton (OEKO-TEX® Standard 100) and modacrylic.
Jersey cover washing instructions	Wash at 60°C and tumble dry.

Lasal Positioning Cushions

Provides tactile and proprioceptive stimuli

- Available in multiple shapes and sizes that give numerous positionings
- Filling is easy movable for different positionings
- Covers have different colors as a help for the caregiver.

Lasal Positioning Cushions are used to position adults and children in lying and sitting positions. The combination of small beads of polystyrene in a flexible covered cushion ensures a multifunctional cushion that adjust to the body shape as well as the supporting surface.

For the caregiver, the cushions are an easy-to-use tool facilitating more varied and correct positions. The cushions are mouldable and therefore more stable than ordinary cushions.

The cushions are also ideal for providing tactile stimuli, delimitation, and increased body-consciousness.

More than 28 different cushions in the Lasal Positioning Cushions series. Using a cover prolongs the expected product service life.



Specifications

Filling	Beads of expanded polystyrene.
Inner cover	PU covered flame retardant polyester textile. Mold and fungus resistant.
Inner cover washing instructions	Does not withstand machine wash but is cleaned using a mild detergent or disinfected with ethanol.
Cotton cover material	OEKO-TEX® standard 100 certified cotton. Anti-bacterially treated.
Cotton cover washing instructions	Wash at 60°C and tumble dry at low temperatures.
Hygiene cover material	PU covered flame retardant polyester textile. Mold and fungus resistant.
Hygiene cover washing instructions	Wash at 95°C and tumble dry at low temperatures.

Lasal Sit Sack

Sit Sack for children and adults who need extra stabilisation in everyday life

- Available in three different sizes
- Solid, soft, and moduable at the same time
- Embraces and stabilizes the patient.

The Lasal Sit Sack embraces as well as stabilizes the patient when seated or lying in it. When the patient is securely seated deep into the Sit Sack, the Sit Sack wraps itself tightly around the body and provides support, using the patient's own weight. In this way, the Sit Sack stabilizes and encircles the patient, without restraining.

The patient can move a bit without the Sit Sack changing its shape notably due to the filling (small beads in a flexible cover). This feature makes the Lasal Sit Sack not comparable to other sit sacks.

The Sit Sack is used in everyday activities and relaxation in many institutions.



Specifications

Filling	Beads of expanded polystyrene
Inner cover	PU covered flame retardant polyester textile. Mold and fungus resistant.
Inner cover washing instructions	Does not withstand any contact with chemical products or solvents. It dissolves the polystyrene beads
Outer cotton cover material	OEKO-TEX® Standard 100 certified pearl cotton
Outer cotton cover washing instructions	Wash at 60°C and tumble dry. Shrinkage 5%.

Dental Cushions

Developed in cooperation with The Mun-H Centre in Odontology in Gothenburg, Sweden

- **Provide support, stabilization, and comfort during dental treatment**
- **Available in many different shapes**
- **Creates a better experience at the dentist for both patient and staff.**

For patients with physical and mental challenges being seated or put down in a dental chair can cause muscle tension, anxiety, and simply discomfort. When developing the dental cushion series, the aim was to provide the best possible positioning in a dental chair in order not to prolong or complicate the dental treatment.

The cushions consist of small beads of polystyrene in a smooth inner cushion contributing to each cushion adjusting to the body shape as well as the dental chair.

All cushions and covers are easy to disinfect.

All cushions can be purchased with washable hygiene covers.

12 different shapes and sizes.



Specifications

Filling	Beads of expanded polystyrene.
Inner cover	PU coated, flame retardant polyester textile. Mold and fungus resistant.
Inner cover washing instruction	The filling inside the inner cover do not withstand machine washing. Disinfect with ethanol instead.
Hygiene cover	PU coated, flame retardant polyester textile. Mold and fungus resistant.
Hygiene cover washing instruction	Wash at 95°C and tumble dry.
Jersey cover	PU coated on backside, flame retardant, Tencel/Lenzing, OEKO-TEX® Standard 100.
Jersey cover washing instruction	Wash at 60°C and tumble dry at low temperatures.

Positioning Products

When standard is no longer sufficient.

Characteristics of our positioning products are that they ensure very high comfort, sensory stimuli, and near-body positioning in very complex cases. Additionally, our positioning products are designed with the goal of offering as many adjustment options as possible without compromising quality.

Several of our elaborated positioning products can be adjusted asymmetrically, catering to patients with different conditions.

All Cobi Rehab products are carefully crafted for staff, ensuring not only a safe work environment but also promoting sustainability through recyclability.

Our experience indicates that our positioning products can enhance the patients' ability to engage in various activities, leading to an increased quality of life.



MobiBed - mobile rest trolley

Be part of more activities with a mobile rest trolley



- **Adjustable in length**
- **Possible to adjust height, back and leg support with remote control**
- **Creates a possibility to be part of the social activities.**

Debilitated patients often experience social exclusion. With a MobiBed they can be both mobile and social because it's suitable for both resting, stabilizing, supporting and transport indoor.

The MobiBed is simple to adjust and operates with electrically driven adjustment of height, and back and leg support. Moreover, the caregiver's working environment is improved significantly because of the height adjustment.

There are nine length positions all in all. The MobiBed also comes with step adjustable handlebar and with parking brake on the handlebar.

The MobiBed is not suitable for use outdoors.

Specifications

Maximum user weight	90 kg
Maximum user height	1720 mm
Maximum length with handlebar and foot support fully extended	2150 mm
Maximum width	720 mm
Height of cushion frame from floor to handlebar	550 mm to 850 mm
Coverless insert cushion filling	Small beads
Coverless insert cushion material	100% PU-covered and fire-repellent polyester.
Coverless insert cushion washing instructions	The coverless insert cushions do not withstand machine wash but can be cleaned with a detergent or disinfected with ethanol.
Grey outer cover for insert cushions material	Lenzing/Tencel
Grey outer cover washing instructions	Washable at 60°C. Tumble-dry at low heat.
Total weight without inserts cushions	55 kg
Puncture free front wheels and rear wheels	200/300 mm
Actuator, motor, lift, back tilt, and leg tilt	LINAK LA40-100 24 V (Load 4000 N)
Control box	LINAK CA41 - SMPS (24 V)
Built-in charger in control box	100V/240V
Manual control	LINAK HB83 3-way
IP-code	IPX6

Kamille Comfort Wheelchair

Electrically adjustable back and electric tilt in space as standard



- **Asymmetric adjustment of back system and seat system**
- **Exceptionally flexible armrest**
- **Crash tested according to ISO 7176-19.**



The Kamille Comfort Wheelchair provides exceptional support to deformities in both upper extremities and lower extremities without special adaptation.

The potential to adapt optimally to the individual helps increasing activity level and quality of life.

Features like electric tilt-in-space, swing away legrests, and armrests as standard makes the Kamille Comfort Wheelchair a very attractive wheelchair.

Furthermore, the legrests can be height-adjusted and angle-adjusted in the knee and ankle joints while the armrests can be angled inwards, downwards, and upwards or adjusted in height using thumb screws making it easy to position e.g., a paretic arm.

Construction

Asymmetrical adjustments are possible thanks to the three movable aluminium plates that make up the back system. Two independent plates in the seat system ensure a precise adjustment that matches the patient's individual anatomical needs.

The wheelchair is equipped with a complete and unique cushion system that ensures optimal

pressure distribution and near-body positioning. Each cushion has its own zipper and can be continuously adjusted (the filling) for the individual patient.

Other features that are worth highlighting are a push bar designed to be used in various positions, a user-friendly remote control with universal illustrations and a large selection of accessories.

Accessories

The Kamille Comfort Wheelchair can be upgraded with specially developed body supports placed in slots on the back system contributing to near-body truncus stability, regardless of whether the user has scoliosis or decreased/increased thoracic tone.

Also developed specially for the Kamille Comfort Wheelchair is a headrest which can be height-adjusted and side-angled (left, right, middle) due to replaceable strong ball joints in the arm of the headrest.

The accessories selection also includes a table, different stretch covers and various types of weighted cushions, comfort arms and legrests.



Specifications

Maximum user weight	140 kg
Seat depth	400-560 mm
Height from floor to front edge of the seat plate without seat cushion	470 mm
Height seat cushion	120 mm
Back angle	96-131°, continuously variable
Seat angle	0-45°, continuously variable
Backrest height	500-525 mm
Seat width	340-520 mm
Total width	640-830 mm
Solid drive wheels	12", PU
Frame	S355 steel and aluminium
Cushion filling	Viscoelastic foam and poly-styrene beads
Seat cushion filling	Viscoelastic foam, polyester fibres, and reusable and breathable TPE
Push bar, adjustable	Yes
Turning radius (pivot)	1100-1300 mm
General requirements and test methods	ISO/EN 12182:2012, ISO/EN 12183:2014, ISO/EN 12184:2014

Kamille Power Comfort Wheelchair

Joystick possible for patient, caregiver or for both



- **Electric tilt-in-space and back angle as standard**
- **Crash tested according to ISO 7176-19**
- **Motorized propulsion.**

A Kamille Power Comfort Wheelchair with a patient-controlled joystick installed on the supplied swivel bracket allows the patient to manoeuvre the wheelchair ensuring independence and freedom to participate in activities.

The user-controlled joystick installed on the push bar similarly makes it easier for relatives or caregivers to manoeuvre the wheelchair to activity or to treatment.

The display on the joystick shows the three travels modes. The travel modes are programmable. The joystick also shows seating settings.

The wheelchair can reach a speed of up to 5 km/h. It is disinfectable and washable (IPX4).



Specifications

Maximum user weight	140 kg
Crash-tested	Yes, according to ISO 7176-19
Weight wheelchair	67 kg
Maximum height of curb which the wheelchair can safely traverse	30 mm
Maximum uphill/downhill inclination	6°
Massive tyres	12", PU
Maximum speed at electric propulsion	5 km/h
Theoretical continuous distance at max weight capacity	Approx. 10 km
Turning radius (pivot)	1100-1300 mm
Actuators/Control box	LINAK LA23/ Curtiss-Wright R-net PM120
Joystick	R-net JSM-LCD

(For more specifications and information see Kamille Comfort Wheelchair)

Kamille Back Support

Danish designed back support that can be adjusted asymmetrically to the individual



- **Kamille back can be mounted on most wheelchairs and electric wheelchairs**
- **Strong back support in the sitting position**
- **Multi-adjustable and easy to reuse.**

The Kamille Back Support is intended for patients in need of heavy back support in the sitting position.

The Kamille Back Support is unique because it can be adjusted asymmetrically. This makes it easier to address anatomical challenges such as scoliosis, increased lateral flexion or asymmetric tissue caused by e.g., being overweight, hernias or oedema.

Asymmetrical adjustments are possible thanks to the three aluminium plates that make up the back system.

Specially developed body supports (optional) placed in slots on the back system contribute to near-body truncus stability.

Breathable and washable back support cover is recommendable and can be ordered.



Specifications

Material	Aluminium
Height	500 mm
Width	340 - 520 mm
Weight	2.3 - 2.6 kg
Compatible with flex arms	Yes
Compatible with neck support	Yes, several types
Cover material	Incontinence cover PU impregnated viscose
Cushion filling	Viscoelastic foam and small beads
Cushion material	Stretchable PU
Disinfectable	Yes

Cobi Sky Positioning Mattress

A positioning mattress that meets the challenges of pressure sores without compromising the stability



- **Modellable mattress for positioning**
- **For highly sensitive patients in need of deep and pressure-relieving positioning**
- **Meets the challenges of pressure sores without compromising the stability and comfort.**

The Cobi Sky Positioning Mattress is used for debilitated patients with e.g., neurological symptoms, severe pain, or unstable fractures with the need for deep and pressure-relieving positioning.

The top layer consists of a cover sewn in channels, so the content of each individual channel (small beads) can be moved around. In this way the mattress can be shaped exactly to the position that the patient needs.

The patient sinks into the mattress, which ensures optimal support and pressure relief, while at the same time reducing the risk of shear.

The grey cover can be washed with a detergent, machine washed or disinfected.

Specifications

Maximum user weight	30-110 kg
Length	2000 mm
Width	850 mm
Height	150 mm
Weight of mattress	13 kg
Mattress	Polyamide fabric, expanded polystyrene beads and polyester fibres
Foam mattress frame	Polyurethane foam, polyester fibres
Fire retardant mattress and outer cover	Yes
Incontinence cover washing instructions	Wash at 60°C and tumble dry on low temperatures or hang to dry
Hypoallergenic cover washing instructions	Wash at 60°C and hang to dry. The incontinence cover do not withstand tumble dry.
Grey outer cover	44% polyamide, 56% polyurethane
White inner cover	94% polyester, 6% spandex

Meet The Export Team



Morten Brøgger Kristensen
CEO

E-mail: mbk@cobi.dk
Tel +45 30 55 45 74



Lennart Axen
Export Sales Director

E-mail: lennart@cobi.dk
Tel +45 30 99 53 73



Julia Sandsten
Export Manager | Physiotherapist

E-mail: Julia@cobi.dk
Tel +45 70 25 25 22



Christina Palikaras
Marketing Manager

E-mail: christina@cobi.dk
Tel +45 70 25 25 22

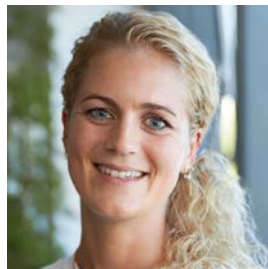
Meet Our Therapists



Mette H. Söderberg
Occupational Therapist
and Consultant



Camilla Kastrupsen
Physiotherapist and
Consultant



Pia Christensen
Physiotherapist and
Consultant



Kasper T. Feldt
Occupational Therapist
and Consultant



Kristian Markussen
Physiotherapist and
Consultant



COBI REHAB

Cobi Rehab | Fuglebækvej 1D, DK-2770 Kastrup | Denmark
Tel. [+45 7025 2522](tel:+4570252522) | E-mail: cobi@cobi.dk | cobirehab.com